

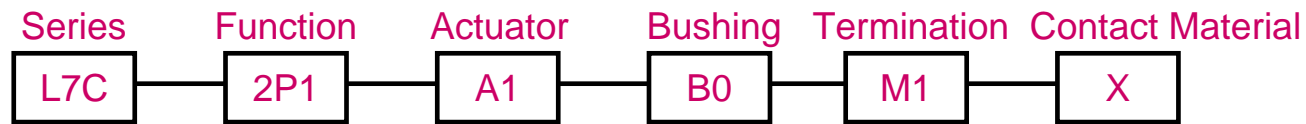
Product Group *NEW!*

Toggle Switch

Type	Splash-proof Toggles Switches
Electrical Life	30,000 cycles
Rating	20A/12A 125VAC/250VAC
Contact Resistance	< 20m-ohms (initial)
Switching Position	ON-ON, ON-(ON), ON-OFF, (ON)-OFF, ON-(OFF), ON-OFF-ON, (ON)-OFF-(ON), ON-OFF-(ON)
Terminal Option	Quick Connect: 6.30mm, 4.70mm, Solder Lug, Screw Terminal
Actuator Type	17.70mm & 50.80mm Metal Bat
Features	<ul style="list-style-type: none"> •High current carrying •UL & CSA approved
Applications	<ul style="list-style-type: none"> •Professional & Industrial fields of application •Military applications •IP65 protection class

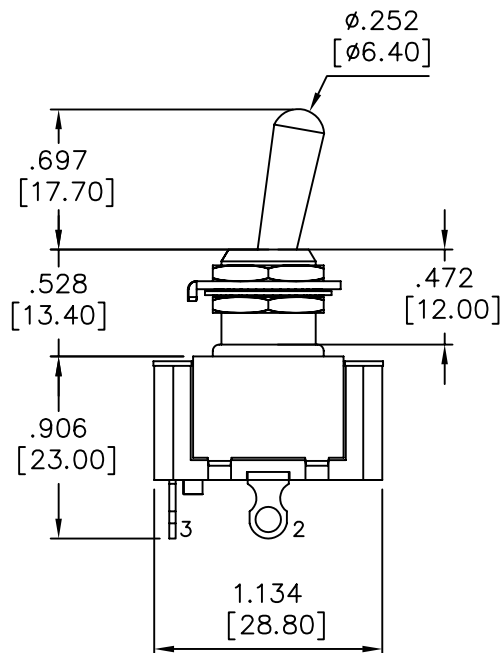
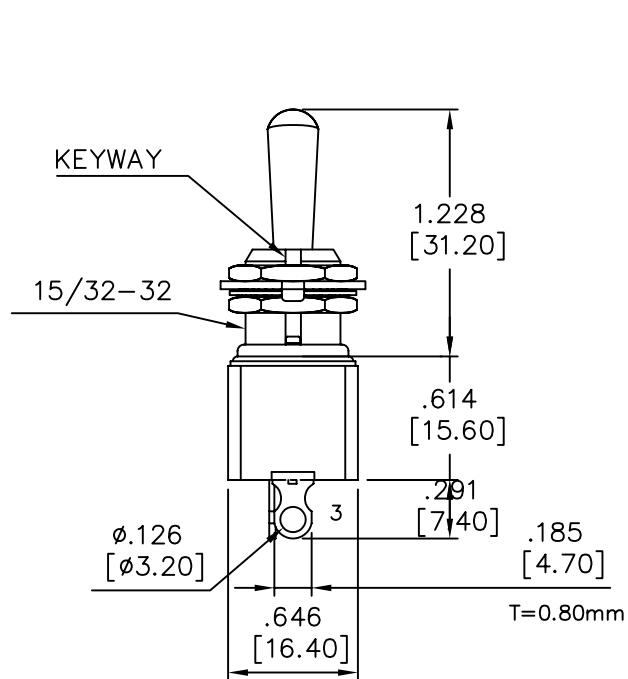
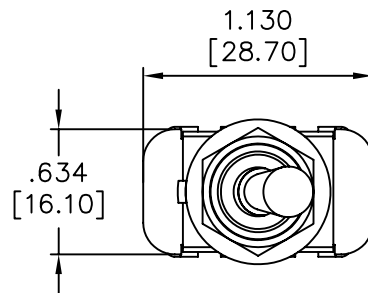
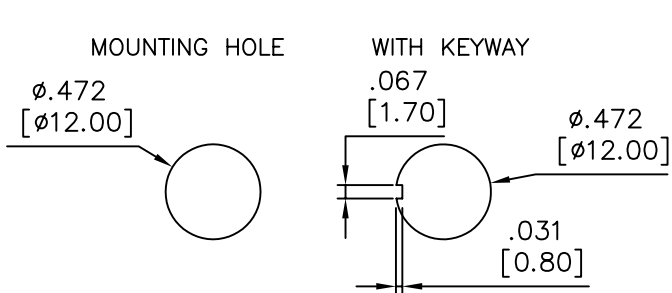


HOW TO ORDER



2P-1 ON-OFF	A1 17.70 (.697")	B0 12.00 (.472")	M1 Solder lug	P Tin plated
2P-8 ON-(OFF)	high, metal bat	15/32 keyway	M3 Quick	X Bronzing
2P-9 (ON)-OFF	A2 50.80 (2.000")	bushing	connect 6.30	
SP-1 ON-ON			(.248")	
SP-2 ON-(ON)			M31 Quick	
SP-3 ON-OFF-ON			connect 4.70	
SP-4 (ON)-OFF-(ON)			(.185")	
SP-5 ON-OFF-(ON)			M4 Screw	
			terminal	

REV. 更改	DESCRIPTION 說明	ENG. 修改人	APPROVE 審核
------------	-------------------	-------------	---------------



MODEL NO.	SWITCH POSITION		
2P-1	ON	NONE	OFF
2P-8	ON	NONE	(OFF)
2P-9	(ON)	NONE	OFF
Term. Comm.	2-3	OPEN	2-1

SPECIFICATIONS:

- MOVABLE CONTACT: Copper alloy, silver plated
- TERMINALS: Brass bronzing plated
- RATING: 12A @ 250VAC or 20A @ 125VAC
1HP 125 250VAC
- CONTACT RESISTANCE: 20m-ohms max. initial
- INSULATION RESISTANCE: 100M-ohms min. @ 500VDC
- DIELECTRIC STRENGTH: 1,500V RMS @ sea level
- ELECTRICAL LIFE: 30,000 make and break cycles at full load
- OPERATING TEMPERATURE: -30°C to +85°C
- IP65 Protection Class
- HAND SOLDERING TEMPERATURE: 350°C for 3sec. Max.
(No pressure to be applied on terminals)

THESE DRAWINGS AND SPECIFICATIONS ARE THE PROPERTY OF TAIWAY ELECTRONICS LTD. AND SHALL NOT BE REPRODUCED COPIED OR USED IN ANY MANNER WITHOUT THE PRIOR WRITTEN CONSENT OF TAIWAY ELECTRONICS LTD.

UNLESS OTHERWISE SPECIFIED DIMENSIONS ARE IN MILLIMETERS ANGULAR TOLERANCE: ±1.0°

DIMENSIONS	TOLERANCE
0.00 TO 30.00mm	±0.20mm
30.01 TO 80.00mm	±0.25mm
80.01 TO 150.00mm	±0.30mm
150.01 TO 300.00mm	±0.40mm

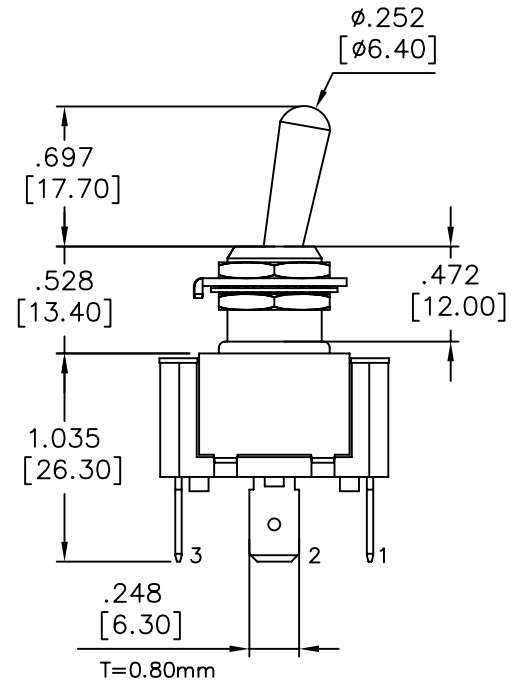
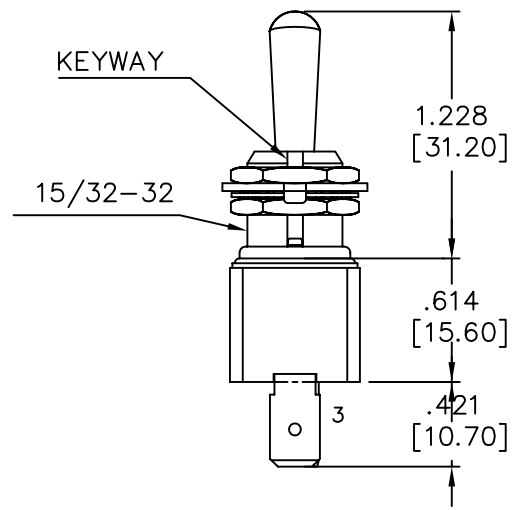
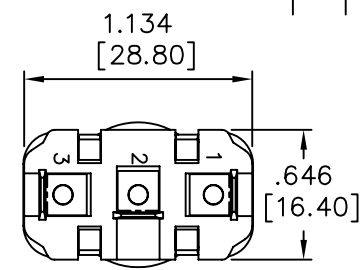
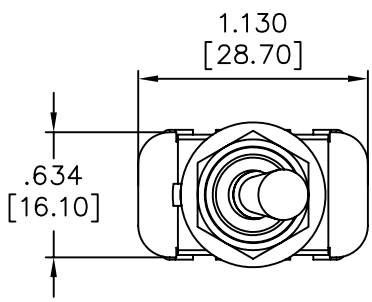
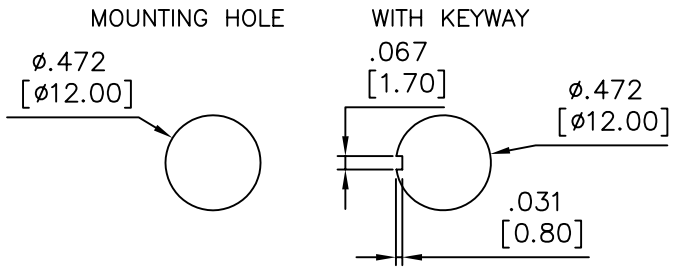
MATERIAL

泰瑋電子有限公司
TAIWAY ELECTRONICS COMPONENTS CO.,LTD.

USED 用途	L7C	APPD. 審核	Amy 2010/03/03
FINISH 處理		CHKD. 校對	Amy 2010/03/03
SCALE 比例	/	UNIT 單位	in(mm)
		DR. 製圖	Amy 2010/03/03

TITLE 名稱	SPLASH PROOF TOGGLE SWITCH			
DWG NO. 圖號	L7C-2P1-A1B0M1X			SIZE 圖紙
FILE NAME 檔案名稱	L7C-2P1-A1B0M1X.dwg	SHEET 張	1/1	REV. 更改
				1

REV. 更改	DESCRIPTION 說明	ENG. 修改人	APPROVE 審核
------------	-------------------	-------------	---------------



MODEL NO.	SWITCH POSITION		
SP-1	ON	NONE	ON
SP-2	ON	NONE	(ON)
SP-A	(ON)	NONE	ON
SP-3	ON	OFF	ON
SP-4	(ON)	OFF	(ON)
SP-5	ON	OFF	(ON)
Term. Comm.	2-3	OPEN	2-1

- SPECIFICATIONS:
- MOVABLE CONTACT: Copper alloy, silver plated
 - TERMINALS: Brass tin plating
 - RATING: 12A @ 250VAC or 20A @ 125VAC
1HP 125 250VAC
 - CONTACT RESISTANCE: 20m-ohms max. initial
 - INSULATION RESISTANCE: 100M-ohms min. @ 500VDC
 - DIELECTRIC STRENGTH: 1,500V RMS @ sea level
 - ELECTRICAL LIFE: 30,000 make and break cycles at full load
 - OPERATING TEMPERATURE: -30°C to +85°C
 - IP65 Protection Class
 - HAND SOLDERING TEMPERATURE: 350°C for 3sec. Max.
(No pressure to be applied on terminals)

THESE DRAWINGS AND SPECIFICATIONS ARE THE PROPERTY OF TAIWAY ELECTRONICS LTD. AND SHALL NOT BE REPRODUCED COPIED OR USED IN ANY MANNER WITHOUT THE PRIOR WRITTEN CONSENT OF TAIWAY ELECTRONICS LTD.

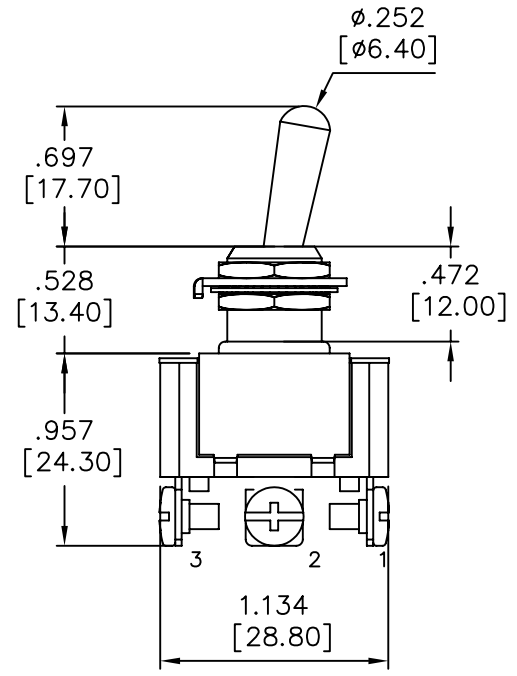
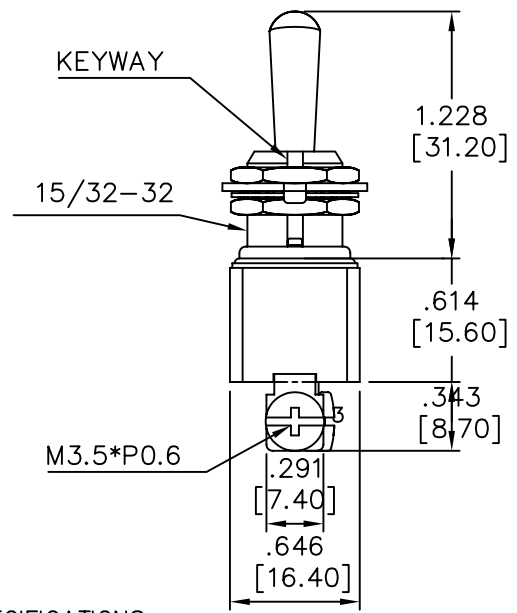
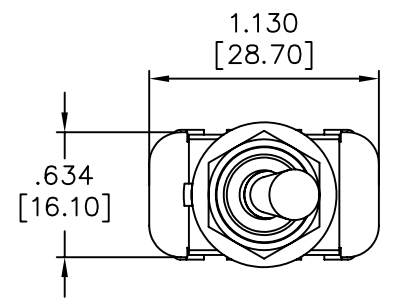
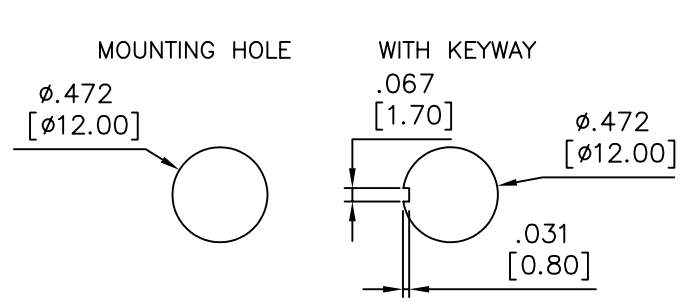
UNLESS OTHERWISE SPECIFIED DIMENSIONS ARE IN MILLIMETERS ANGULAR TOLERANCE: ±1.0°

DIMENSIONS	TOLERANCE
0.00 TO 30.00mm	±0.20mm
30.01 TO 80.00mm	±0.25mm
80.01 TO 150.00mm	±0.30mm
150.01	±0.40mm

泰瑋電子有限公司
TAIWAY ELECTRONICS COMPONENTS CO.,LTD.

USED 用途	L7C	APPD. 審核	Amy 2010/03/03
FINISH 處理		CHKD. 校對	Amy 2010/03/03
SCALE 比例	/	UNIT 單位	in(mm)
		DR. 製圖	Amy 2010/03/03
TITLE 名稱	SPLASH PROOF TOGGLE SWITCH		
DWG NO. 圖號	L7C-SP1-A1B0M3P		SIZE 圖紙
FILE NAME 檔案名稱	L7C-SP1-A1B0M3P.DWG	SHEET 張	1/1
		REV. 更改	1

REV. 更改	DESCRIPTION 說明	ENG. 修改人	APPROVE 審核
------------	-------------------	-------------	---------------



MODEL NO.	SWITCH POSITION		
SP-1	ON	NONE	ON
SP-2	ON	NONE	(ON)
SP-A	(ON)	NONE	ON
SP-3	ON	OFF	ON
SP-4	(ON)	OFF	(ON)
SP-5	ON	OFF	(ON)
Term. Comm.	2-3	OPEN	2-1

SPECIFICATIONS:

- MOVABLE CONTACT: Copper alloy, silver plated
- TERMINALS: Brass tin plating
- RATING: 12A @ 250VAC or 20A @ 125VAC
1HP 125 250VAC
- CONTACT RESISTANCE: 20m-ohms max. initial
- INSULATION RESISTANCE: 100M-ohms min. @ 500VDC
- DIELECTRIC STRENGTH: 1,500V RMS @ sea level
- ELECTRICAL LIFE: 30,000 make and break cycles at full load
- OPERATING TEMPERATURE: -30°C to +85°C
- IP65 Protection Class
- HAND SOLDERING TEMPERATURE: 350°C for 3sec. Max.
(No pressure to be applied on terminals)

THESE DRAWINGS AND SPECIFICATIONS ARE THE PROPERTY OF TAIWAY ELECTRONICS LTD. AND SHALL NOT BE REPRODUCED COPIED OR USED IN ANY MANNER WITHOUT THE PRIOR WRITTEN CONSENT OF TAIWAY ELECTRONICS LTD.

UNLESS OTHERWISE SPECIFIED DIMENSIONS ARE IN MILLIMETERS ANGULAR TOLERANCE: ±1.0°

DIMENSIONS	TOLERANCE
0.00 TO 30.00mm	±0.20mm
30.01 TO 80.00mm	±0.25mm
80.01 TO 150.00mm	±0.30mm
150.01 TO 300.00mm	±0.40mm

泰瑋電子有限公司
TAIWAY ELECTRONICS COMPONENTS CO.,LTD.

USED 用途	L7C	APPD. 審核	Amy 2010/03/03
FINISH 處理		CHKD. 校對	Amy 2010/03/03
SCALE 比例	/	UNIT 單位	in(mm)
		DR. 製圖	Amy 2010/03/03
TITLE 名稱	SPLASH PROOF TOGGLE SWITCH		
DWG NO. 圖號	L7C-SP1-A1B0M4		SIZE 圖紙
			A4
FILE NAME 檔案名稱	L7C-SP1-A1B0M4	SHEET 張數	1/1
		REV. 更改	1

1 2 3 4 5 6 7

REV. 更改	DESCRIPTION 說明	ENG. 修改人	APPROVE 審核

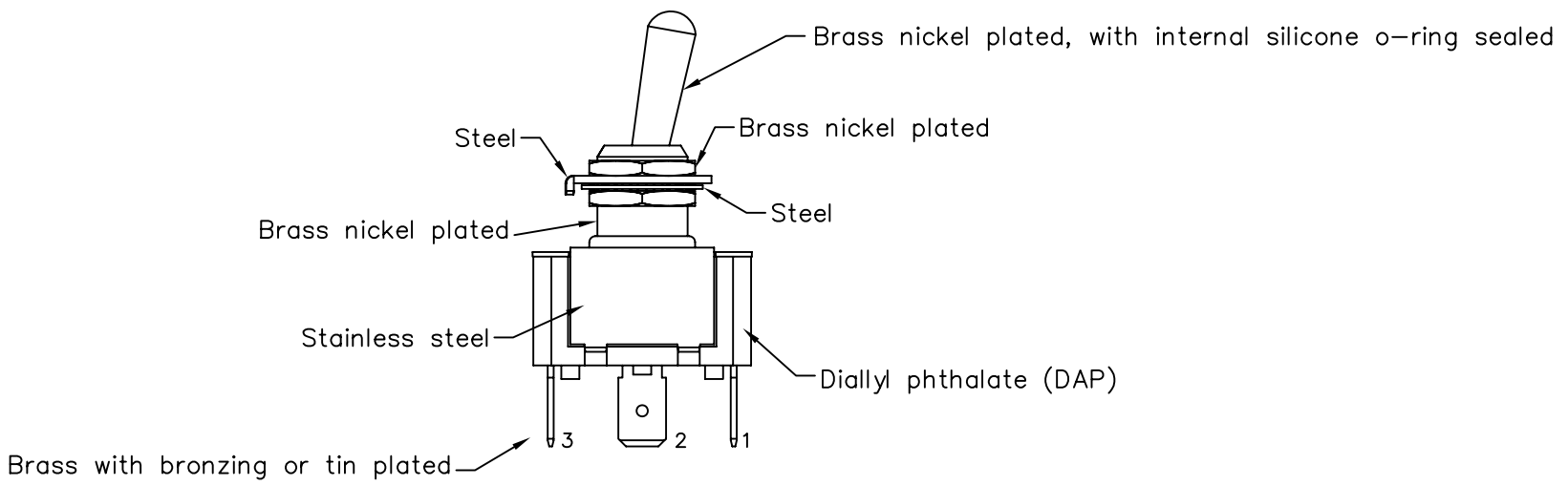
A A

B B

C C

D D

E E



THESE DRAWINGS AND SPECIFICATIONS ARE THE PROPERTY OF TAIWAY ELECTRONICS LTD. AND SHALL NOT BE REPRODUCED COPIED OR USED IN ANY MANNER WITHOUT THE PRIOR WRITTEN CONSENT OF TAIWAY ELECTRONICS LTD.				泰瑋電子有限公司 TAIWAY ELECTRONICS COMPONENTS CO.,LTD.											
UNLESS OTHERWISE SPECIFIED DIMENSIONS ARE IN MILLIMETERS ANGULAR TOLERANCE: ±1.0°		USED 用途 L7C		APPD. 審核 Amy 2010/02/08											
<table border="1"> <tr> <th>DIMENSIONS</th> <th>TOLERANCE</th> </tr> <tr> <td>0.00 TO 30.00mm</td> <td>±0.20mm</td> </tr> <tr> <td>30.01 TO 80.00mm</td> <td>±0.25mm</td> </tr> <tr> <td>80.01 TO 150.00mm</td> <td>±0.30mm</td> </tr> <tr> <td>150.01 </td> <td>±0.40mm</td> </tr> </table>		DIMENSIONS	TOLERANCE	0.00 TO 30.00mm	±0.20mm	30.01 TO 80.00mm	±0.25mm	80.01 TO 150.00mm	±0.30mm	150.01	±0.40mm	FINISH 處理		CHKD. 校對 Amy 2010/02/08	
DIMENSIONS	TOLERANCE														
0.00 TO 30.00mm	±0.20mm														
30.01 TO 80.00mm	±0.25mm														
80.01 TO 150.00mm	±0.30mm														
150.01	±0.40mm														
MATERIAL		SCALE / UNIT in(mm) 比例 單位		DR. 製圖 Amy 2010/02/08											
TITLE 名稱 SPLASH PROOF TOGGLE SWITCH															
DWG NO. 圖號 L7C-Material List				SIZE 圖紙 A4											
FILE NAME 檔案名稱 L7C-Material.dwg			SHEET 張 1 / 1	REV. 更改 1	7文號: ER-013b										

1 2 3 4 5 6 7