

Series KRS

Tact Switches/Tactile Switch SMT

SPECIFICATIONS:

CONTACT RATING: 50mA 12V DC.
 CONTACT RESISTANCE: 100m-ohms max. at 1A 2-4VDC.
 INSULATION RESISTANCE: 100M-ohms max. @ 500VDC.
 WITHSTAND VOLTAGE: 100VAC RMS for 1 min.
 ENDURANCE: 10,000 cycles @ 10 cpm.
 OPERATING FORCE: 100gf.

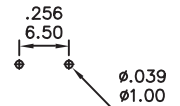
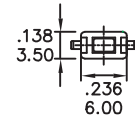
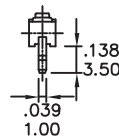
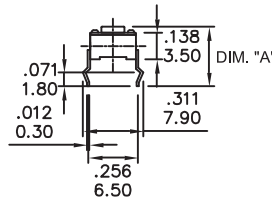
TOTAL TRAVEL: 0.25mm.

Specifications and Dimensions subject to change

KRS-0312



L	DIM. "A"
1	4.30(.169)
2	5.00(.197)

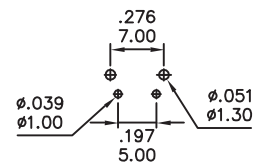
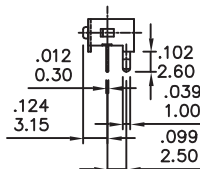
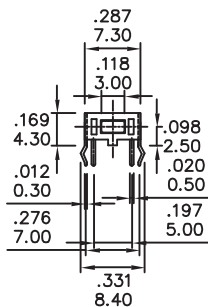


P.C.B. LAND PATTERN

KRS-0314



L	DIM. "A"
1	3.15(.124)
2	3.85(.152)

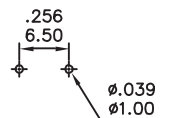
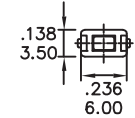
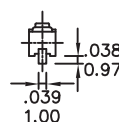
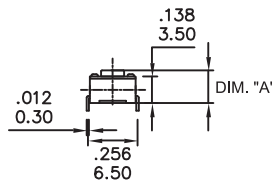


P.C.B. LAND PATTERN

KRS-0315



L	DIM. "A"
1	4.30(.169)
2	5.00(.197)

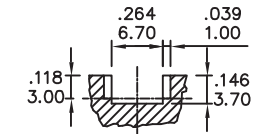
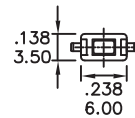
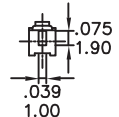
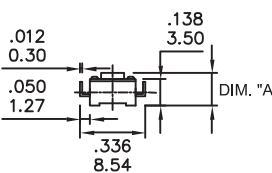


P.C.B. LAND PATTERN

KRS-0316



L	DIM. "A"
1	4.30(.169)
2	5.00(.197)

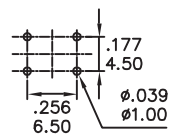
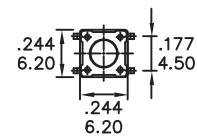
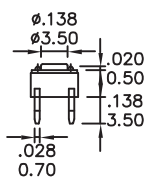
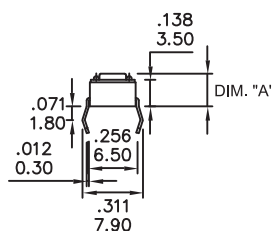


P.C.B. LAND PATTERN

KRS-0612



L	DIM. "A"
1	4.30(.169)
2	5.00(.197)
3	7.00(.276)
5	9.50(.374)
6	13.00(.512)
7	13.50(.531)
8	8.00(.315)



P.C.B. LAND PATTERN

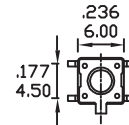
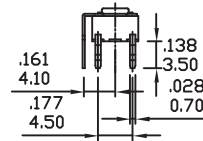
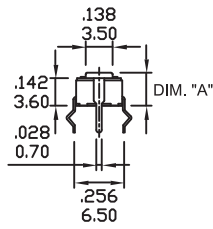
Series KRS

Tact Switches/Tactile Switch SMT

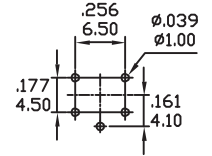
KRS-0613



L	DIM. "A"
1	4.30(.169)
2	5.00(.197)
3	7.00(.276)
5	9.50(.374)



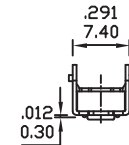
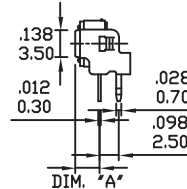
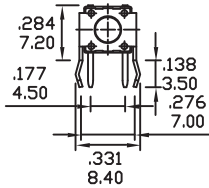
P.C.B LAND PATTERN



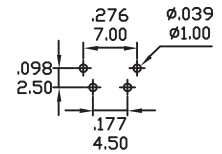
KRS-0614



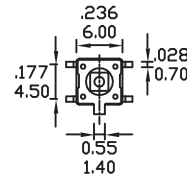
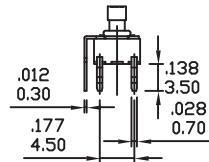
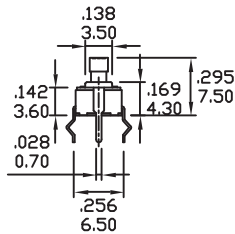
L	DIM. "A"
1	3.15(.124)
2	3.85(.152)
3	5.85(.230)
5	8.35(.329)
6	11.85(.467)



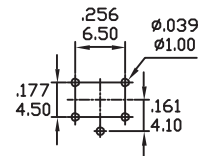
P.C.B LAND PATTERN



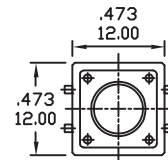
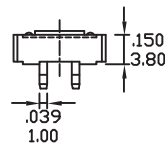
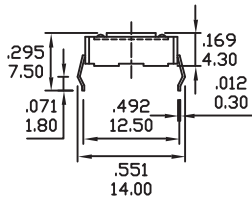
KRS-0615



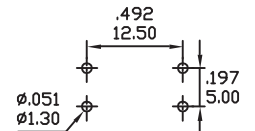
P.C.B LAND PATTERN



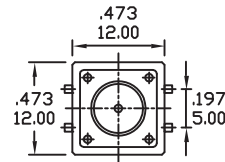
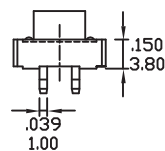
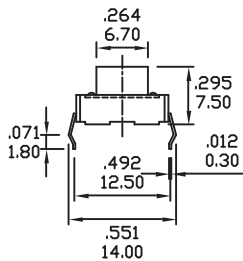
KRS-1213



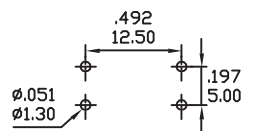
P.C.B LAND PATTERN



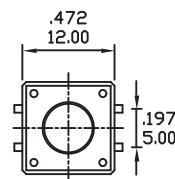
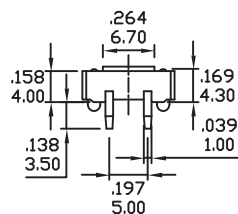
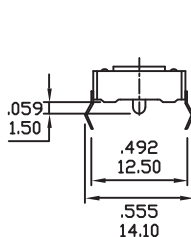
KRS-1223



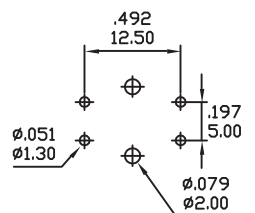
P.C.B LAND PATTERN



KRS-1243

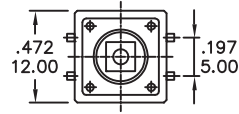
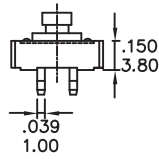
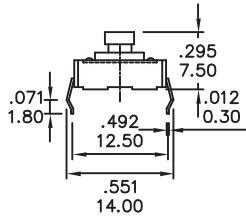


P.C.B LAND PATTERN

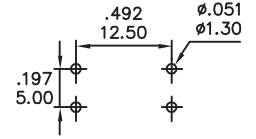


Series KRS

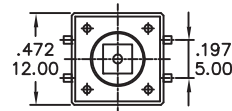
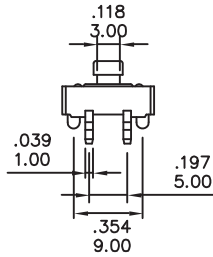
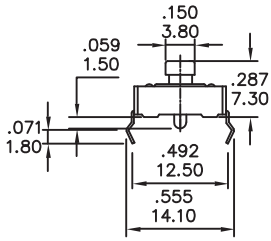
Tact Switches/Tactile Switch SMT



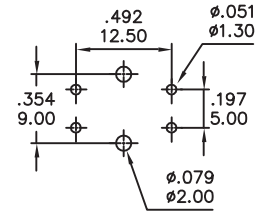
P.C.B LAND PATTERN



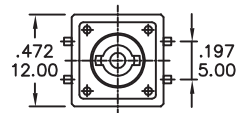
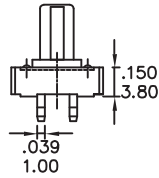
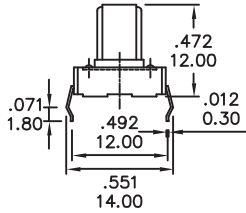
KRS-1273



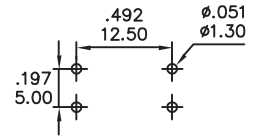
P.C.B LAND PATTERN



KRS-1283



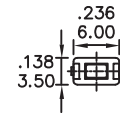
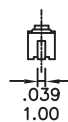
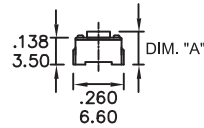
P.C.B LAND PATTERN



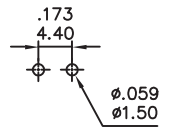
KRSM-3A



L	DIM. "A"
1	4.30(.169)
2	5.00(.197)



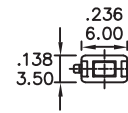
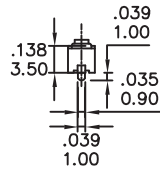
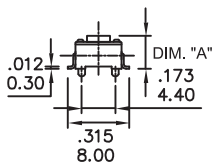
P.C.B LAND PATTERN



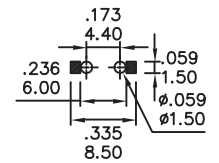
KRSM-3B



L	DIM. "A"
1	4.30(.169)
2	5.00(.197)



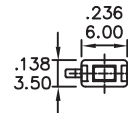
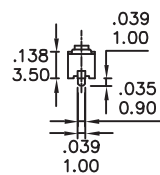
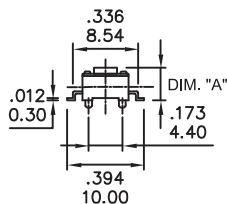
P.C.B LAND PATTERN



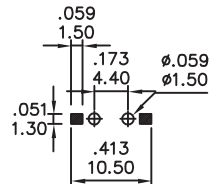
KRSM-3C



L	DIM. "A"
1	4.30(.169)
2	5.00(.197)



P.C.B LAND PATTERN



Series KRS

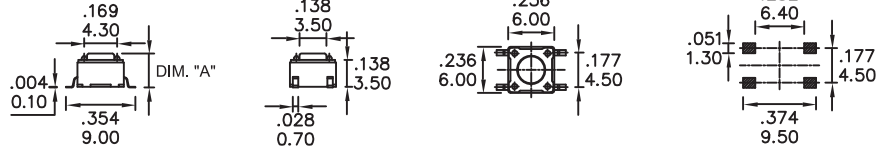
Tact Switches / Tactile Switch SMT

KRSM-6

P.C.B LAND PATTERN

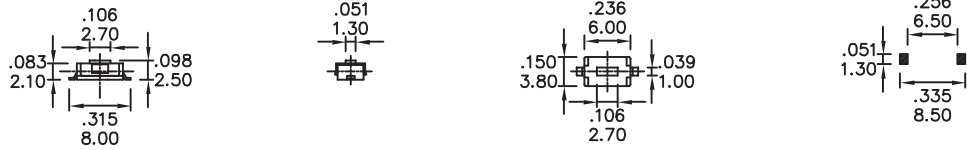


L	DIM. "A"
1	4.30(.169)
2	5.00(.197)
3	7.00(.276)
4	7.30(.287)
5	9.50(.374)



KRSM-13

P.C.B LAND PATTERN

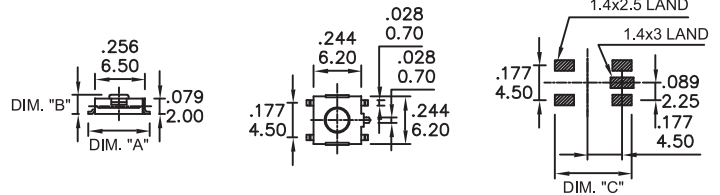


KRSM-16 □ □

P.C.B LAND PATTERN



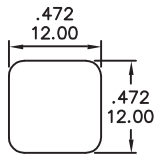
MODEL NO.	DIM."A"	DIM."B"	DIM."C"
KRSM-1611	8.00(.315)	2.50(.098)	10.00(.394)
KRSM-1612	8.00(.315)	3.10(.122)	10.00(.394)
KRSM-1621	10.00(.394)	2.50(.098)	12.00(.472)
KRSM-1622	10.00(.394)	3.10(.122)	12.00(.472)



CAP

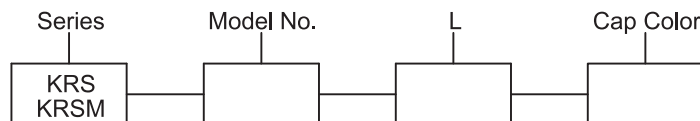
CAP COLORS

For KRS-1263 and KRS-1273 only



Color No.	Color	Color No.	Color
1	White	6	Green
2	Black	7	Blue
3	Red	8	Brown
4	Orange	9	Gray
5	Yellow		

HOW TO ORDER



* Cap color only required when cap is ordered.

Series KRSS

Sealed Tact Switches

SPECIFICATIONS:

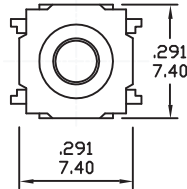
CONTACT RATING: 50mA 12V DC.
 CONTACT RESISTANCE: 100m-ohms max.
 TRAVEL: 0.25±0.10mm.
 LIFE: 100,000 cycles min.
 OPERATING FORCE: 130, 160±30, 250±50gf.

MATERIALS:

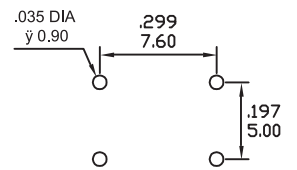
CASE & STEM: Nylon 66 G30%.
 COVER: 0.3t electrolytic tin plate (E.T).
 TERMINAL: 0.3t C2680R-EH.
 C/PLETAT: 0.06t AG-C5210R-EH.
 RUBBER: Silicon.

Specifications and Dimensions subject to change

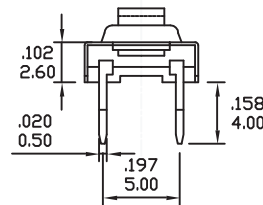
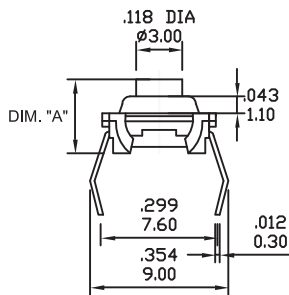
KRSS-0712



P.C.MOUNTING

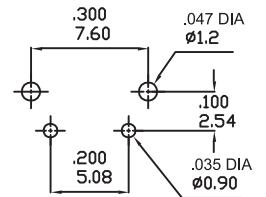
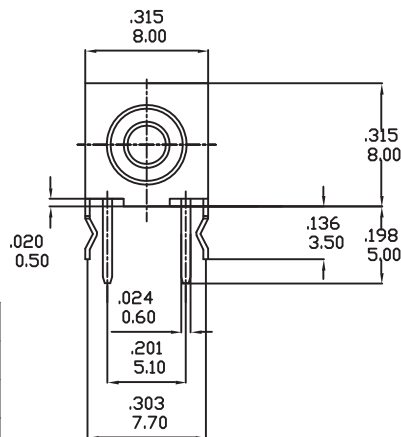


L	DIM. "A"
1	4.70(.185)
2	5.20(.205)
3	6.90(.272)
4	10.00(.394)

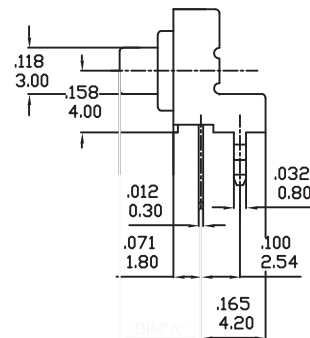


KRSS-0714

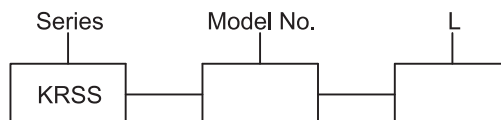
P.C.MOUNTING



L	DIM. "A"
1	3.50(.138)
2	4.00(.158)
3	5.70(.225)
4	8.70(.343)



HOW TO ORDER



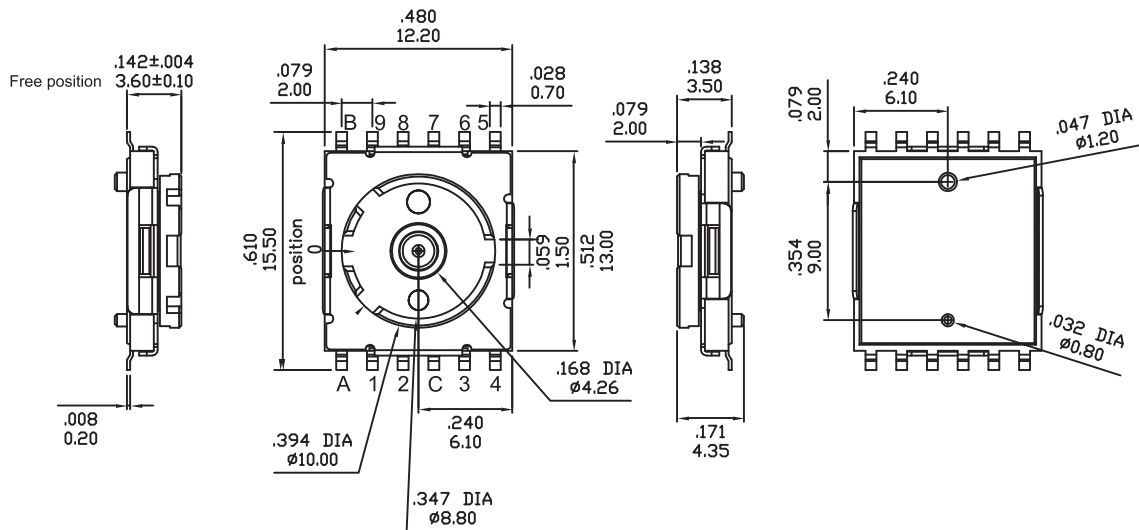
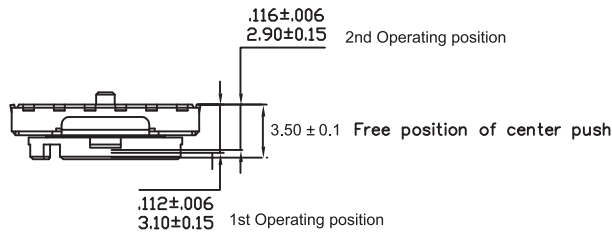
SPECIFICATIONS:

RATING: 12 VDC 50 mA.
 OPERATING TEMPERATURE: -20°C +70°C
 CONTACT RESISTANCE: 100m-ohms (initial).
 INSULATION RESISTANCE: 50M-ohms DC100V Min.
 OUTPUT RESOLUTION:
 10 pulse / 360°C, each detent 36°C±3°C.

CENTER PUSH TRAVEL:
 3SA: 1st=3.1±0.15mm, 2nd=2.9±0.15mm.
 3SC: 3.35±0.1mm.
 OPERATING FORCE (CENTER PUSH):
 1st=100±50gf, 2nd=260±80gf,
 rotary=80gf-cm±50gf-cm.
 ELECTRICAL LIFE (CENTER PUSH):
 center push:100,000 cycles Min.
 rotary:50,000 cycles Min.

Specifications and Dimensions subject to change

3SA

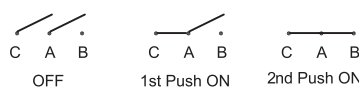


CODE: A (10 position)

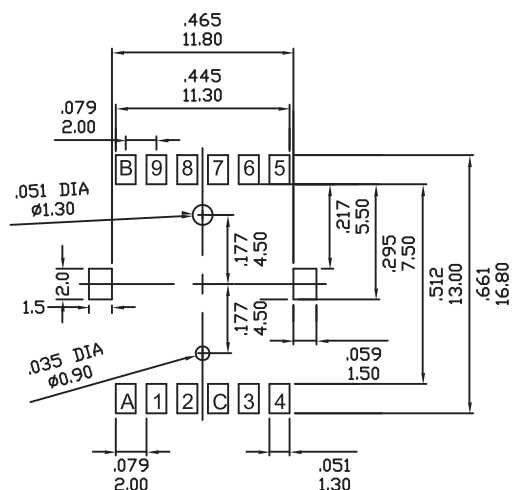
POSITION	0	1	2	3	4	5	6	7	8	9
TERMINAL C		●	●	●	●	●	●	●	●	●
1		●								
2			●							
3				●						
4					●					
5						●				
6							●			
7								●		
8									●	
9										●

The ● marks shows the "ON" position.

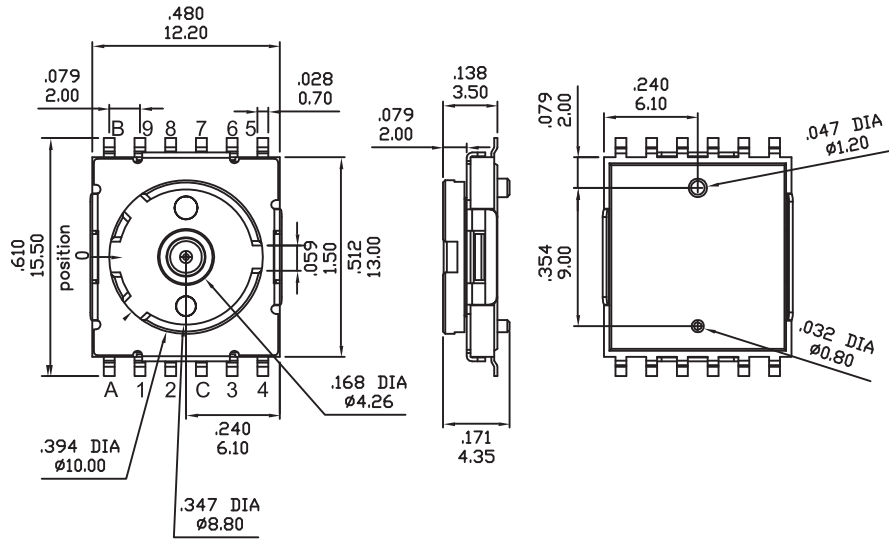
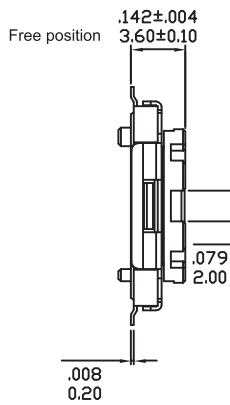
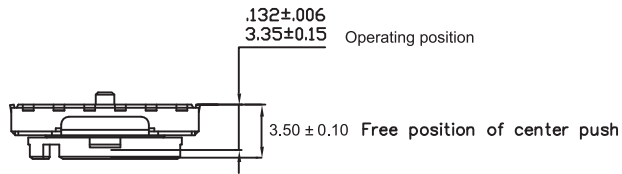
CIRCUIT DIAGRAM OF CENTER PUSH



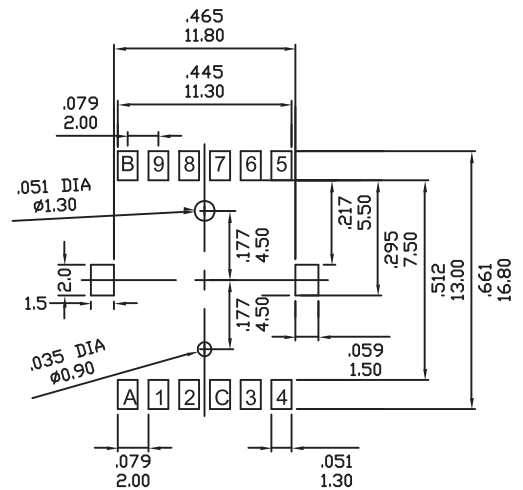
P.C.B MOUNTING



3SC



P.C.B MOUNTING

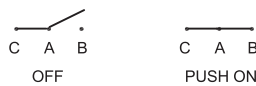


CODE: C (10 position)
CIRCUIT DIAGRAM OF ROTARY

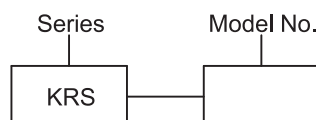
POSITION	0	1	2	3	4	5	6	7	8	9
C		●	●	●	●	●	●	●	●	●
1		●								
2			●							
3				●						
4					●					
5						●				
6							●			
7								●		
8									●	
9										●

The ●marks shows the "ON" position.

CIRCUIT DIAGRAM OF CENTER PUSH



HOW TO ORDER



Series DAS

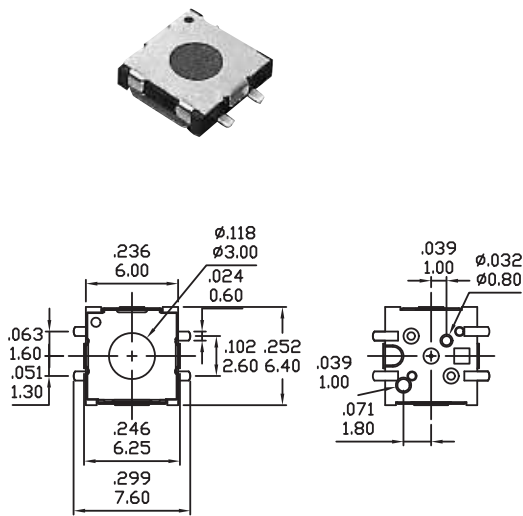
Double Action Switches

SPECIFICATIONS:

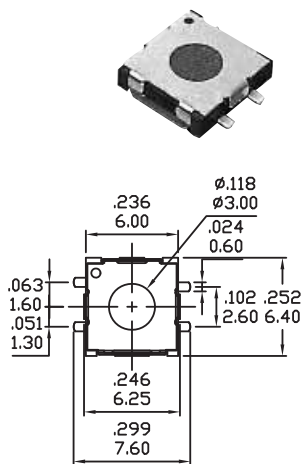
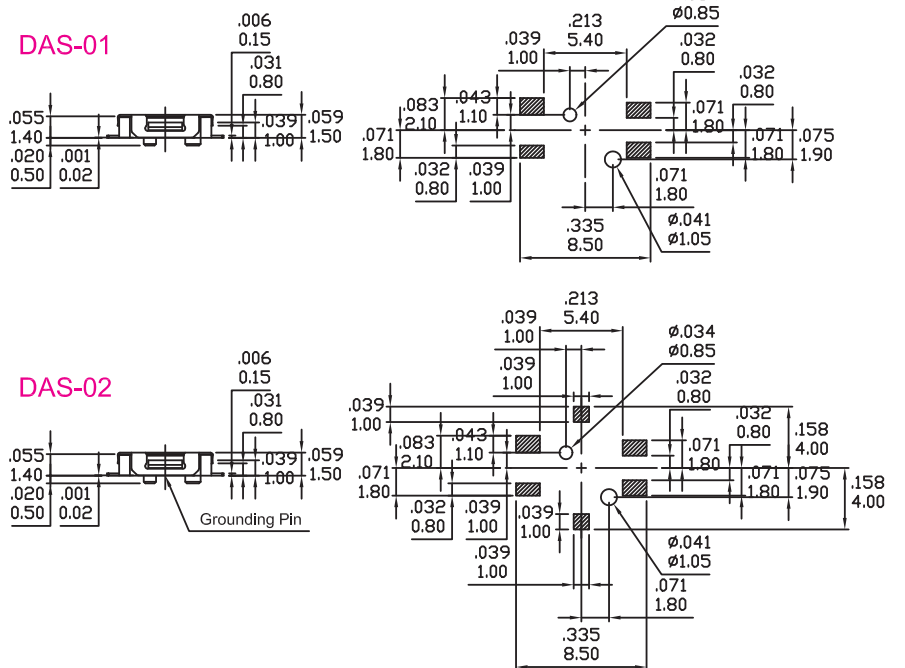
RATING: 12 VDC 50 mA.
 OPERATING TEMPERATURE: -20°C +70°C.
 CONTACT RESISTANCE: 200m-ohms (Initial).
 INSULATION RESISTANCE: 100M-ohms MIN.
 WITHSTANDING VOLTAGE:
 To be normal for 1 minute at 250 VDC.

BOUNCE: 5 ms MAX.
 ELECTRICAL LIFE: 20,000 times.
 OPERATING FORCE: 1st=1.0±0.4N 2nd=2.9±0.8N.
 HEAT RESISTANCE:
 Manual soldering 300°C 3 sec.
 Reflow soldering 240°C 20 sec MAX.
 PACKING QUANTITY: 2000 pcs/per reel.

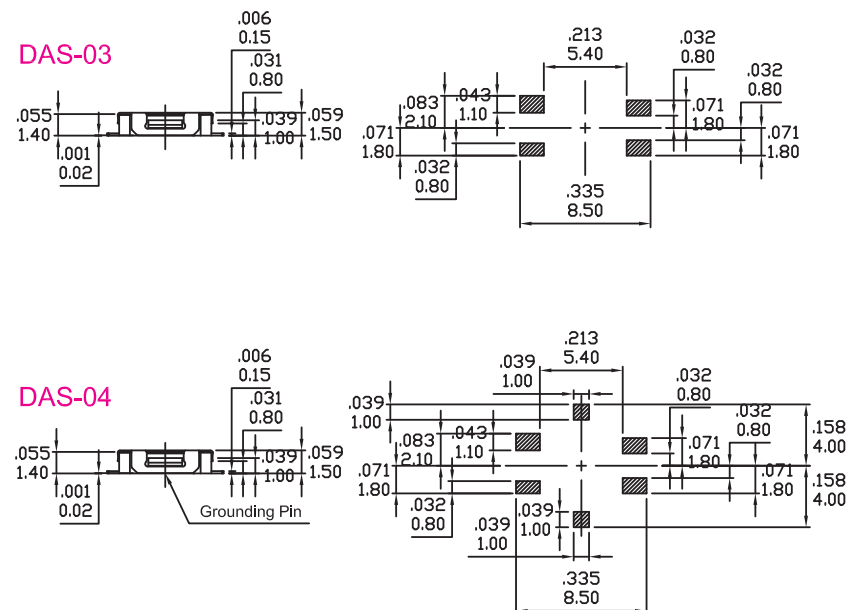
Specifications and Dimensions subject to change



P.C.B MOUNTING



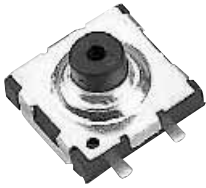
P.C.B MOUNTING



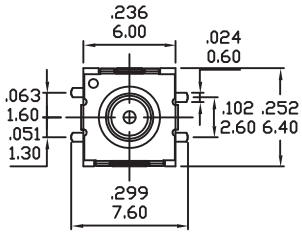
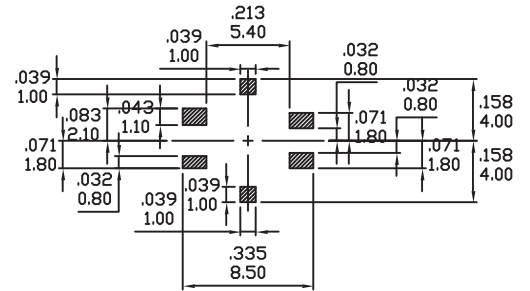
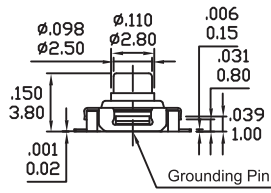
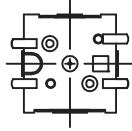
Series DAS

Double Action Switches

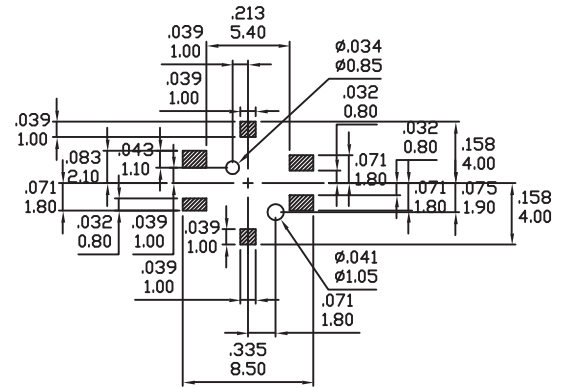
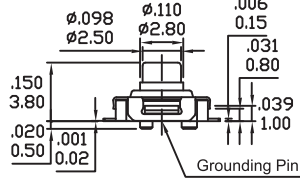
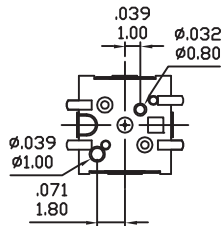
P.C.B MOUNTING



DAS-05



DAS-06



HOW TO ORDER

