

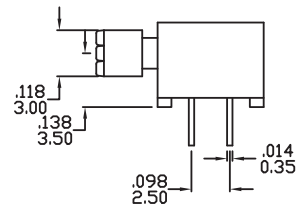
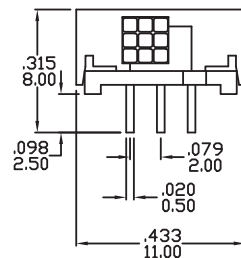
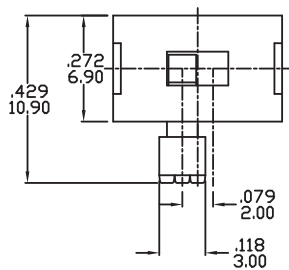
SPECIFICATIONS:

RATING: DC30V 0.3A.
 INSULATION RESISTANCE: >100M-ohms DC500V.
 WITHSTAND VOLTAGE: AC500V 1 min.
 CONTACT RESISTANCE: <30m-ohms.
 SOLDERING TEMPERATURE: 255°C max. 5 sec.

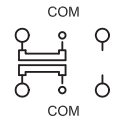
MECHANICAL LIFE: 30,000 cycles.
 ELECTRICAL LIFE: 10,000 cycles.
 OPERATING TEMPERATURE: -20°C to +70°C.
 AMBIENT HUMIDITY: <85%RH.
 OPERATING FORCE: 200±150gf.

Specifications and Dimensions subject to change

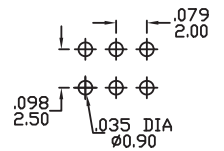
01P-22



SCHEMATIC



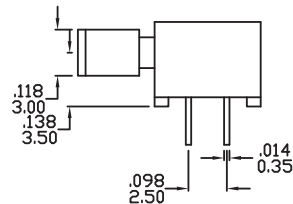
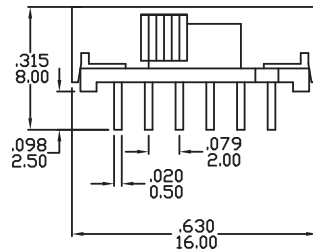
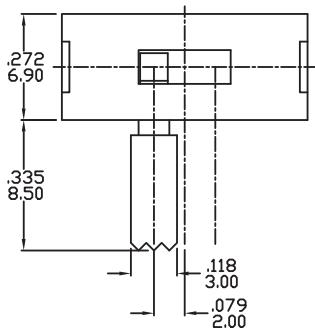
P.C.B. MOUNTING



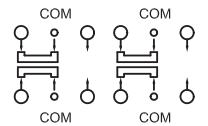
2P2T

Drawing Scale: 2 / 1

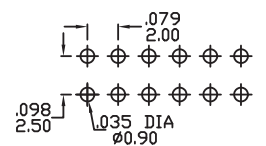
03P-42



SCHEMATIC



P.C.B. MOUNTING



4P2T

Drawing Scale: 2 / 1

HOW TO ORDER

