

SPECIFICATIONS:

CONTACT RATING: Refer to "Contact material Options" for more info.

CONTACT RESISTANCE: 10mΩ max. initial @ 2-4VDC
100mA for both silver and gold plated contacts.

ELECTRICAL LIFE: 50,000 actuations at full load.

INSULATION RESISTANCE: 1,000M ΩMin.

DIELECTRIC STRENGTHS: 1,500V RMS @ sea level.

OPERATION TEMPERATURE: -30°C to + 85°C.

MATERIALS:

CASE: Diallyl phthalate(DAP)(UL 94V-0).

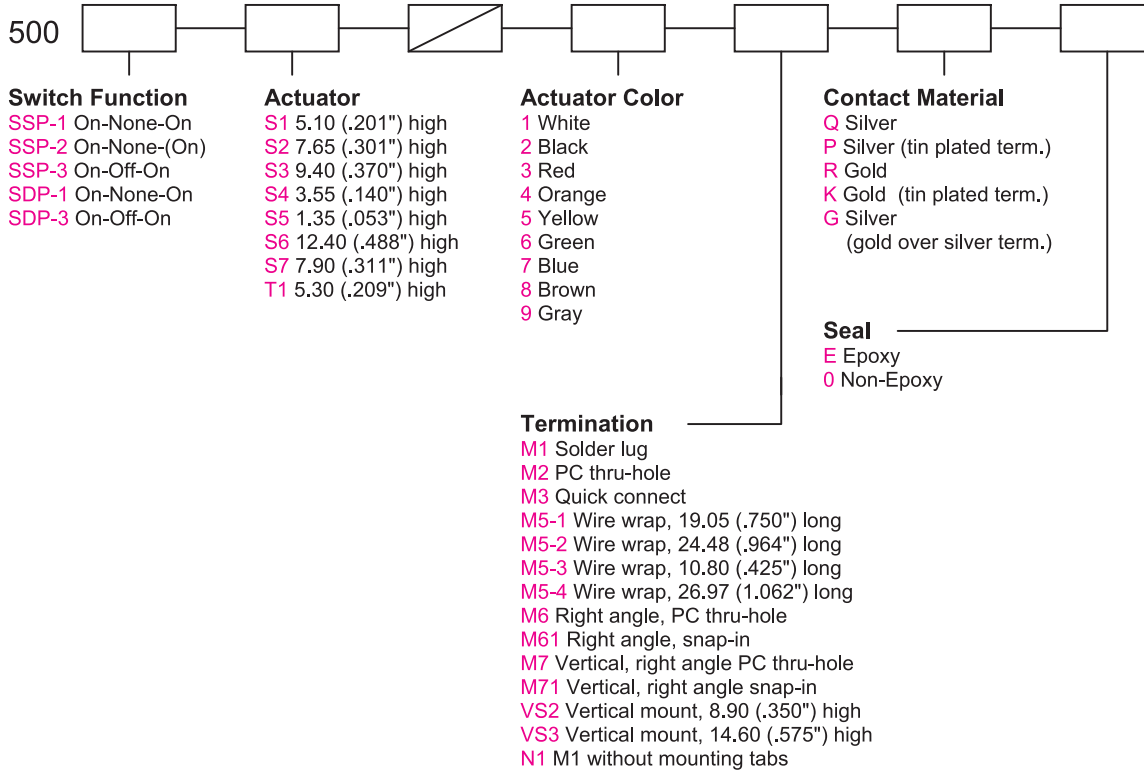
HOUSING: Stainless Steel.

SLIDE HANDLE: Nylon 6, black standard.

TERMINAL SEAL: Epoxy.

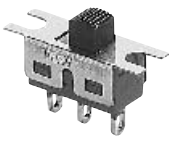
If your preferred product configuration is not shown, please contact our sales representative for custom design.

HOW TO ORDER SYSTEM



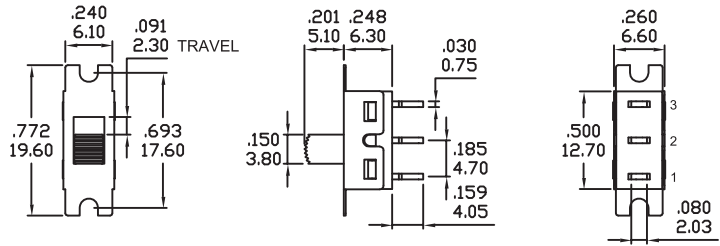
Specifications and Dimensions subject to change

SPDT

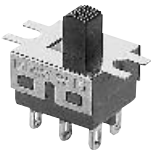


Model No.	Switching Position		
SSP-1	ON	NONE	ON
SSP-2	ON	NONE	(ON)
SSP-3	ON	OFF	ON
Term. Comm.	2-1	OPEN	2-3

Schematic

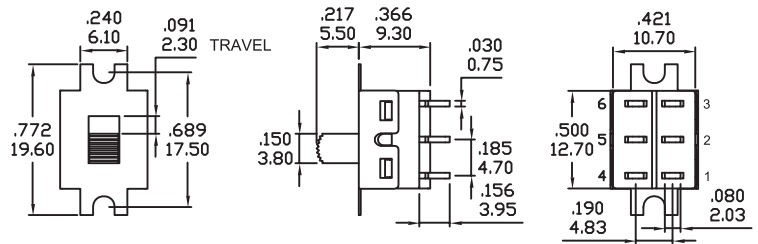
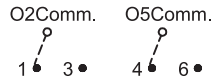


DPDT



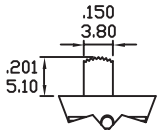
Model No.	Switching Position		
SDP-1	ON	NONE	ON
SDP-3	ON	OFF	ON
Term. Comm.	2-1 5-4	OPEN	2-3 5-6

Schematic



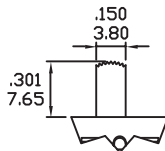
ACTUATOR OPTIONS

S1



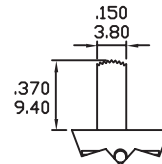
* Add 0.40 (.016) from actuator height for DPDT-M1 and M2 model.

S2



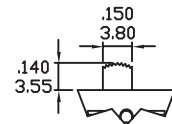
* Add 0.20 (.008) from actuator height for DPDT-M1 and M2 model.

S3



* Add 0.30 (.012) from actuator height for DPDT-M1 and M2 model.

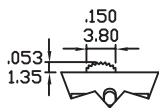
S4



* Add 0.40 (.016) from actuator height for DPDT-M1 and M2 model.

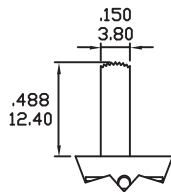
* All actuator length shown is SPDT model with M1 and M2 terminals.

S5 FOR DPDT ONLY

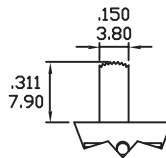


* Add 0.70 (.028) from actuator height for DPDT-M1 and M2 model.

S6

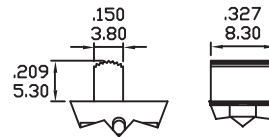


S7



* Add 0.40 (.016) from actuator height for DPDT model.

T1 FOR DPDT ONLY

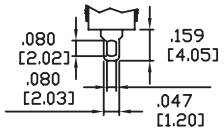


ACTUATOR COLORS	
1	White
2	Black(Std.)
3	Red
4	Orange
5	Yellow
6	Green
7	Blue
8	Brown
9	Gray

* All actuator length shown is SPDT model with M1 and M2 terminals.

TERMINATION OPTIONS

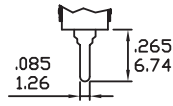
M1 STD. SOLDER LUG



THK .030 (0.75)

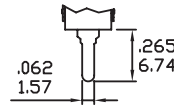
* Standard with Mounting Tabs.

M2 PC THRU-HOLE



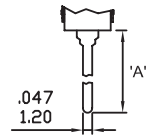
THK .030 (0.75)

M3 QUICK CONNECT



THK .030 (0.75)

M5 WIRE WRAP

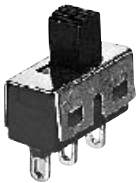


THK .030 (0.75)

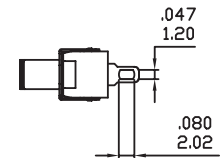
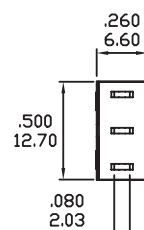
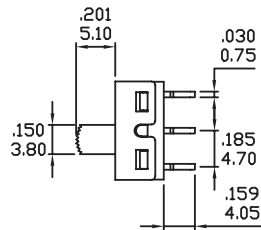
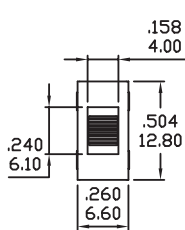
OPTION CODE	DIM.'A'
M5-1	.750(19.05)
M5-2	.964(24.48)
M5-3	.425(10.80)
M5-4	1.062(26.97)

TERMINATION OPTIONS WITHOUT MOUNTING TABS

N1



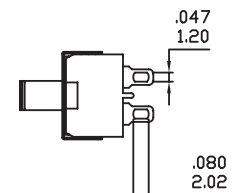
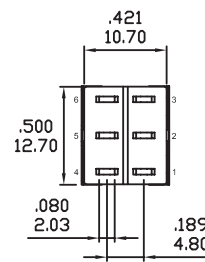
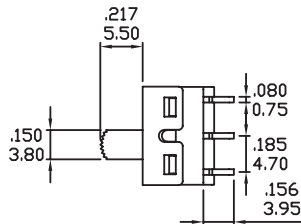
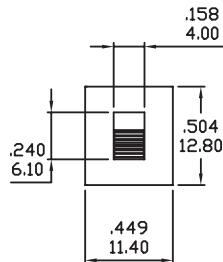
SPDT



N1



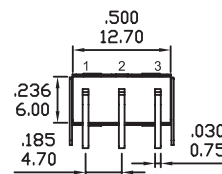
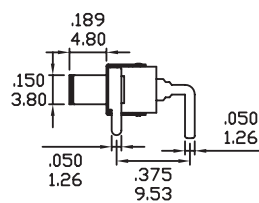
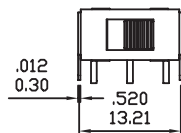
DPDT



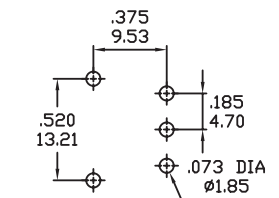
M6



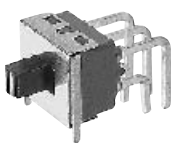
SPDT



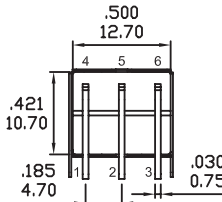
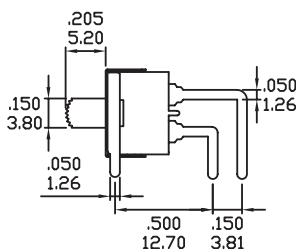
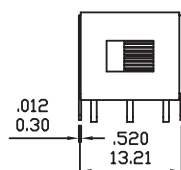
P.C.MOUNTING



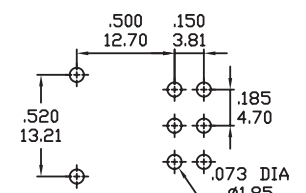
M6



DPDT



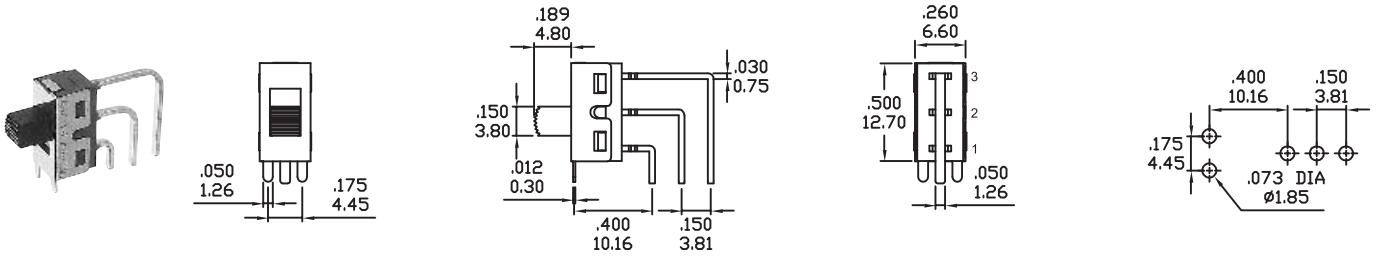
P.C.MOUNTING



TERMINATION OPTIONS WITHOUT MOUNTING TABS

M7

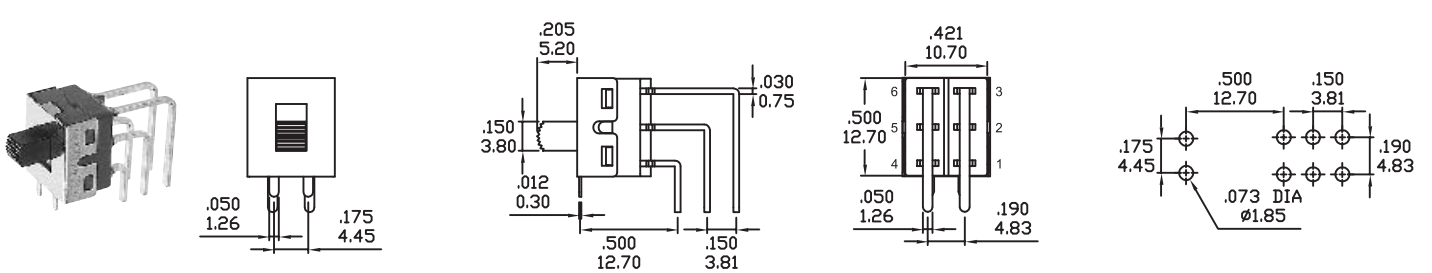
P.C.MOUNTING



SPDT

M7

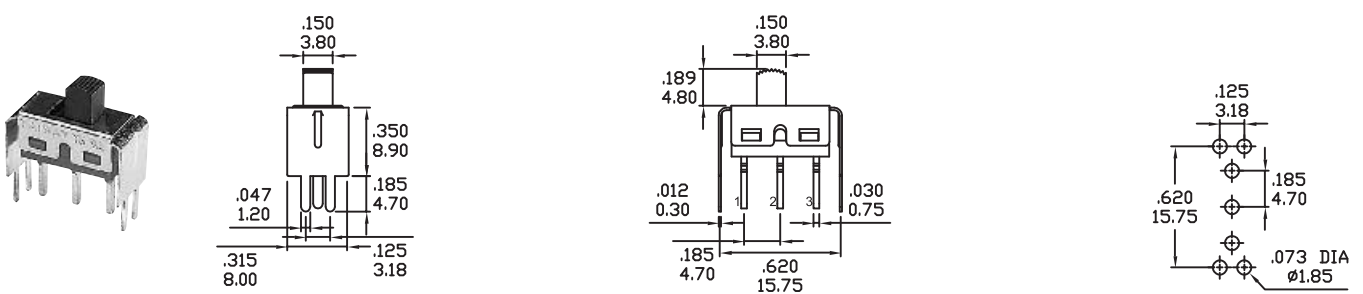
P.C.MOUNTING



DPDT

VS-2

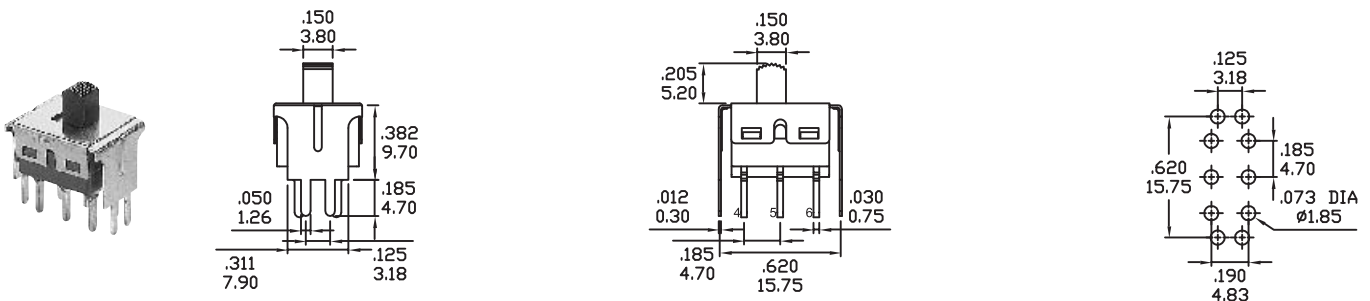
P.C.MOUNTING



SPDT

VS-2

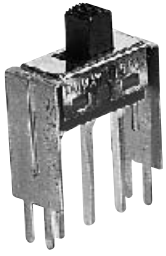
P.C.MOUNTING



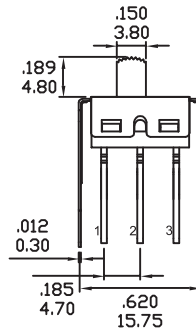
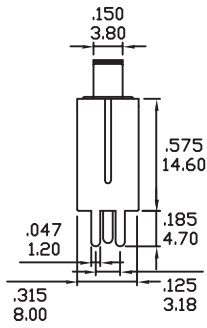
DPDT

TERMINATION OPTIONS WITHOUT MOUNTING TABS

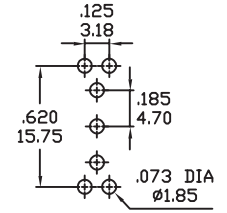
VS-3



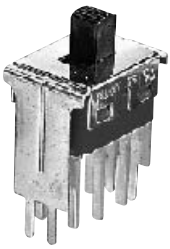
SPDT



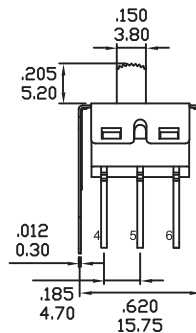
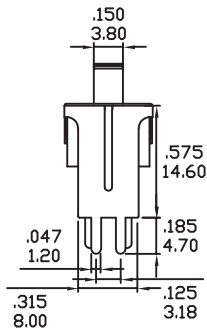
P.C.MOUNTING



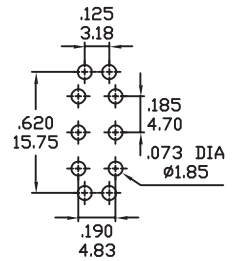
VS-3



DPDT



P.C.MOUNTING



CONTACT MATERIAL OPTIONS

Coding	Contact Material	Terminal Plating	Rating	Agency Approvals
Q	Silver ¹	Silver plated ¹	5Amps @ 125VAC or 28VDC 2Amps @ 250VAC	
P		Tin plated ⁵ ₇		
R	Gold ²	Gold plated ⁴	0.4VA max @ 20V max (AC or DC)	
K		Tin plated ⁵ ₆		
G	Silver ¹	Gold over silver ³	5Amps @ 125VAC or 28VDC 2Amps @ 250VAC	

1. Movable Contact / Terminals: Copper alloy, silver plated.
2. Movable Contact: Copper alloy with gold plated over nickel plated.
3. Terminals: Silver plated with outer layer in gold plating.
4. Terminals: Copper alloy, with gold plated over nickel plated.
5. Outer Terminals: Copper alloy with pure tin plated.
6. Terminal Contact: Gold plated over nickel plated.
7. Terminal Contact: Palladium nickel alloy (or Silver) plated.

* P, K is not available with M1 and M3 terminals

* 6Amps (Movable Contact: coin silver, silver plated) available with model ON-NONE-ON without UL approval