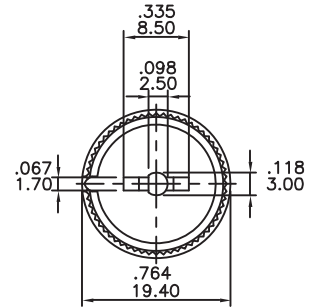
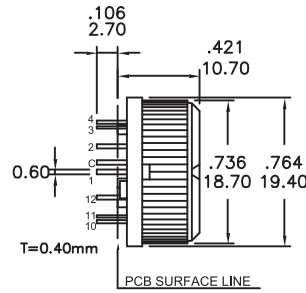
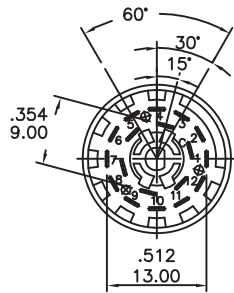


SPECIFICATIONS:

CONTACT RATING: AC/DC 150V 130mA.
 ELECTRICAL LIFE: 15,000 cycles at full load
 CONTACT RESISTANCE: 25mΩmax. initial.
 INSULATION RESISTANCE: 100MΩmax.
 DIELECTRIC STRENGTH: 1,000 V RMS @ sea level.
 OPERATING TEMPERATURE: -30°C to + 80°C.
 STOPS: Adjustable 2 through 12 position -30°C indexing.

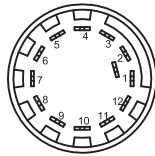
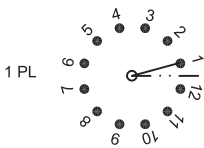
MATERIALS:

SHAFT: Aluminum.
 COVER: PA.
 BASE: PA.
 CONTACTS: PBS+Ag.
 TERMINALS: Brass+Ag.
 MOVEMENT: PA.
 SPRING: SUS.



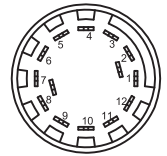
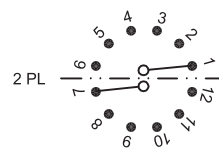
Model No.	Switching Position
8405-1	1P-12Pos

Schematic



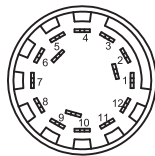
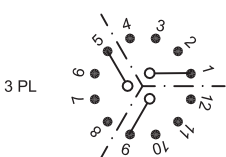
Model No.	Switching Position
8405-2	2P-6Pos

Schematic



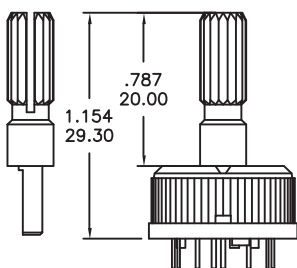
Model No.	Switching Position
8405-3	3P-4Pos

Schematic

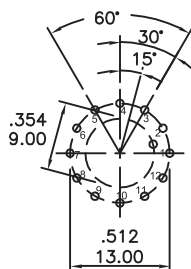


SHAFT OPTIONS

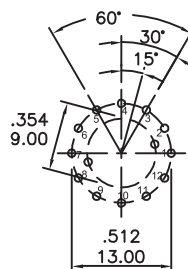
A = With Shaft
 B = Without Shaft



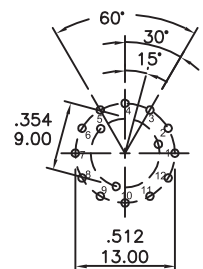
P.C.MOUNTING



8405-1 MODELS



8405-2 MODELS



8405-3 MODELS

Specifications and Dimensions subject to change

Series 840

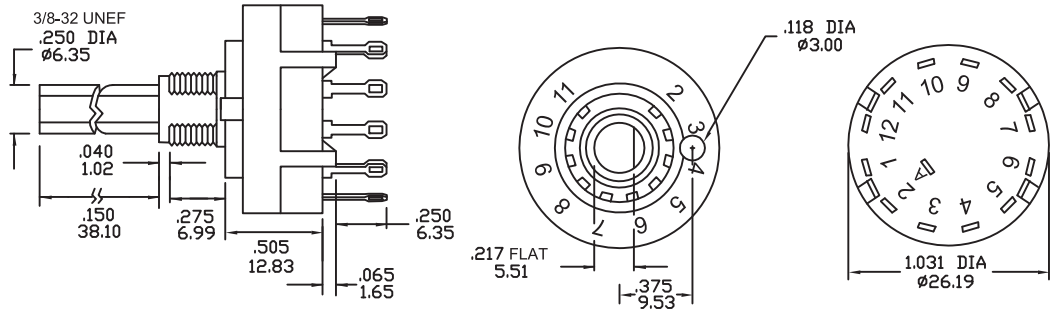
Rotary Switches

SPECIFICATIONS:

CONTACT RATING: 350mA @ 110V (AC or DC).
 150mA @ 250V (AC or DC).
 CURRENT CARRYING CAPACITY: 5A continuous. (Non-switching)
 ELECTRICAL LIFE: 15000 cycles at full load up to 30,000 detent operations.
 CONTACT RESISTANCE: 20mΩ max. initial.
 DIELECTRIC STRENGTH: 1000 V RMS @ sea level.
 OPERATING TEMPERATURE: -20°C to +85°C.
 STOPS: Adjustable 2 through 12 position -30°C indexing.

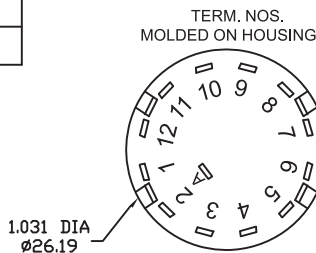
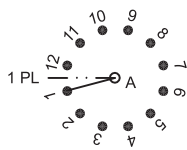
MATERIALS:

SHAFT: Glass filled nylon, color-gray.
 COVER: Glass filled nylon, color-gray.
 BASE: Glass filled nylon, color-gray.
 CONTACTS: Brass, silver plated.
 TERMINALS: Brass, silver plated.
 HARDWARE: Nut-Zinc, nickel plated.
 LOCKWASHER: Steel, bright Zinc plated.
 STOP RING: Brass, nickel plated.



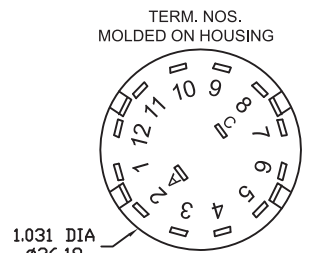
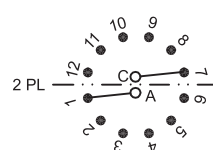
Model No.	Switching Position
8404-1	1P-12Pos

Schematic



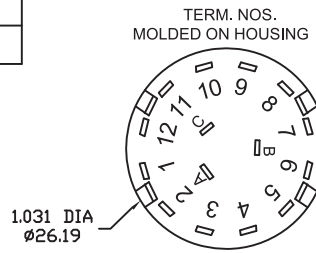
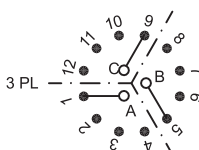
Model No.	Switching Position
8404-2	2P-6Pos

Schematic



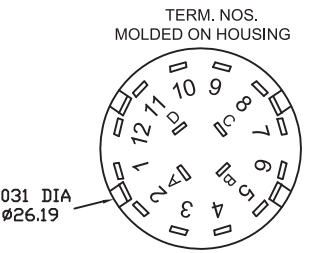
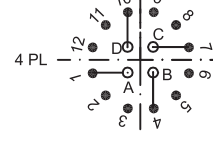
Model No.	Switching Position
8404-3	3P-4Pos

Schematic

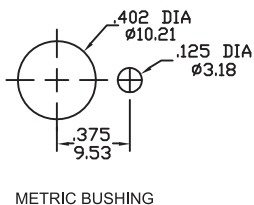
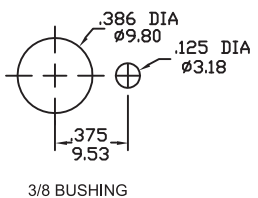


Model No.	Switching Position
8404-4	4P-3Pos

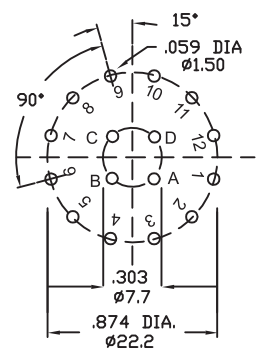
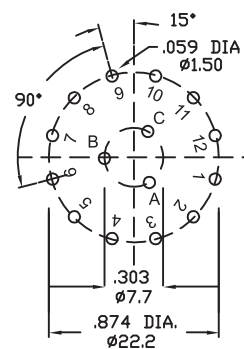
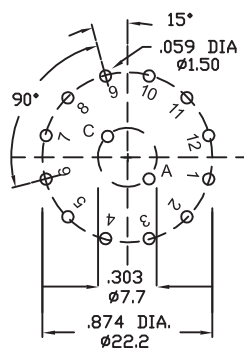
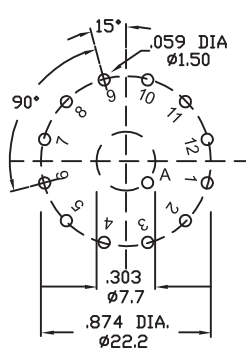
Schematic



PANEL MOUNTING

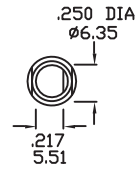
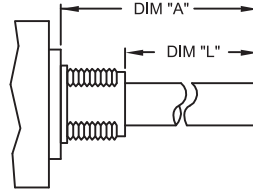


P.C.MOUNTING



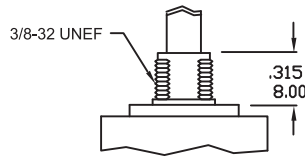
ACTUATOR OPTIONS

Actuator	DIM"A"	DIM"L"
38	38.00(1.496)	30.00(1.181)
29	29.00(1.142)	21.00(0.827)
21	21.00(0.827)	13.00(0.512)
18	18.00(0.709)	10.00(0.394)
15	15.00(0.591)	7.00(0.276)



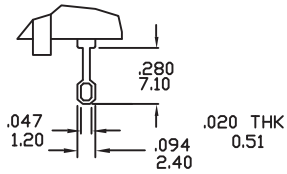
BUSHING OPTIONS

E STD.

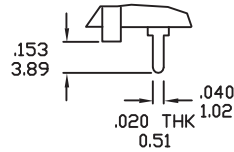


TERMINATION OPTIONS

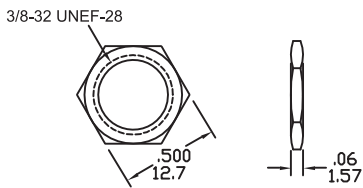
B STD.



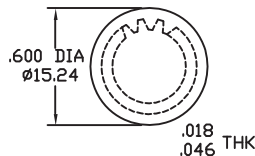
C PRINTED CIRCUIT



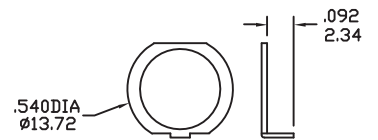
NUT



LOCK WASHER



STOP RING



CONTACT OPTIONS

NS STD.

Non-Shorting Contacts: Break before make

SC

Shorting Contacts: Make before break

HOW TO ORDER

