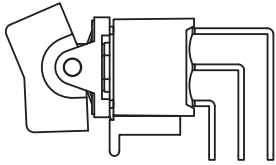
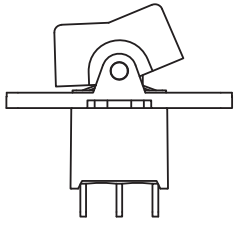


# Series 300A/C (Sealed) Miniature Rocker & Paddle Switches

## SPECIFICATIONS:

CONTACT RATING: Refer to "Contact Material Options" for more info.  
 ELECTRICAL LIFE: 50,000 make-and-break cycles at full load.  
 CONTACT RESISTANCE: 10mΩ max. initial @2-4VDC.  
 100mA, for both silver and gold plated contacts.  
 INSULATION RESISTANCE: 1,000MΩ min.  
 DIELECTRIC STRENGTH: 1500V RMS @ sea level.  
 OPERATING TEMPERATURE: -30°C to +85°C.

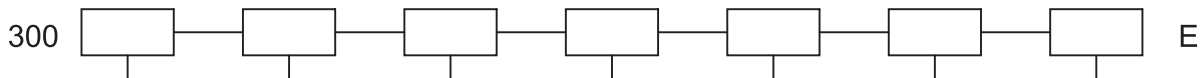


## MATERIALS:

CASE & BUSHING: PA9T or FR52, flame retardant, heat stabilized (UL 94V-0).  
 ACTUATOR: Nylon, black std, internal o-ring sealed (300A).  
 ACTUATOR: Nylon, black std (300C).  
 PANEL REAR MOUNT: Nylon, black std.  
 SWITCH SUPPORT: Brass, tin plated.  
 ACTUATOR PIVOT & MOUNTING BRACKET: Nylon, black std.  
 ACTUATOR PIVOT RETAINER: Stainless steel.  
 TERMINAL SEAL: Epoxy.

If your preferred product configuration is not shown, please contact our sales representative for custom design.

## HOW TO ORDER SYSTEM



### Series

- A Sealed, red case
- C Miniature Rocker, gray case

### Switch Function

- WSP-1 On-None-On
- WSP-2 On-None-(On)
- WSP-3 On-Off-On
- WSP-4 (On)-Off-(On)
- WSP-5 On-Off-(On)
- WDP-1 On-None-On
- WDP-2 On-None-(On)
- WDP-3 On-Off-On
- WDP-4 (On)-Off-(On)
- WDP-5 On-Off-(On)
- WDP-6 On-On-On
- WDP-7 (On)-On-(On)
- WDP-8 On-On-(On)
- WDP-9 Off-On-(On)
- W3P-1 On-None-On
- W3P-2 On-None-(On)
- W3P-3 On-Off-On
- W3P-4 (On)-Off-(On)
- W3P-5 On-Off-(On)

### Actuator

- R1 STD. rocker
- R2 STD. paddle
- R3 Medium rocker
- R4 Large paddle
- R5 Large rocker
- R6 Small rocker
- R7 Medium paddle
- RA R1 with - O marking
- RC R6 with white • Marking
- RD R1 with I O
- RE R3 with red • marking
- RI R1 with red • marking
- RK R3 with UP DOWN marking
- C6 R6 with I O marking

### Frame Color

- 0 No frame color required

### Actuator Color

- 0 No color required
- 1 White
- 2 Black
- 3 Red
- 4 Orange
- 5 Yellow
- 6 Green
- 7 Blue
- 8 Brown
- 9 Gray

### Termination

- M1 Solder lug
- M2 PC thru-hole
- M3 Quick connect
- M5-1 Wire wrap, 19.05 (.750") long
- M5-2 Wire wrap, 24.48 (.964") long
- M5-3 Wire wrap, 10.80 (.425") long
- M5-4 Wire wrap, 26.97 (1.062") long
- M6 Right angle, PC thru-hole
- M61 Right angle, snap-in
- M7 Vertical, right angle PC thru-hole
- VS2 Vertical mount, 11.70 (.461") high
- VS21 Vertical mount, snap-in 11.70 (.461") high
- U2 Vertical mount, 14.00 (.551") high
- VS3 Vertical mount, 16.00 (.630") high
- VS31 Vertical mount, snap-in 16.00 (.630") high
- VS4 Vertical mount, 11.70 (.461") high
- VS41 Vertical mount, snap-in 11.70 (.461") high
- U4 Vertical mount, 14.00 (.551") high
- VS5 Vertical mount, 16.00 (.630") high
- VS51 Vertical mount, snap-in 16.00 (.630") high

### Contact Material

- Q Silver
- P Silver (tin plated term.)
- R Gold
- K Gold (tin plated term.)
- G Silver (gold over silver term.)

### Note:

Q plating not available with 300A.

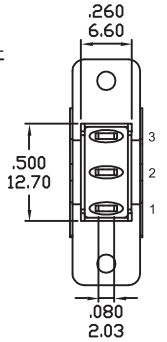
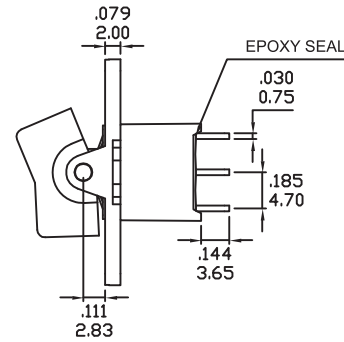
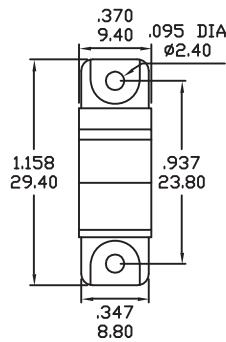
# Series 300A/C (Sealed) Miniature Rocker & Paddle Switches

## SPDT

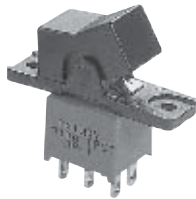


| Model No.   | Switching Position |      |      |
|-------------|--------------------|------|------|
|             |                    |      |      |
| WSP-1       | ON                 | NONE | ON   |
| WSP-2       | ON                 | NONE | (ON) |
| WSP-3       | ON                 | OFF  | ON   |
| WSP-4       | (ON)               | OFF  | (ON) |
| WSP-5       | ON                 | OFF  | (ON) |
| Term. Comm. | 2-3                | OPEN | 2-1  |

Schematic

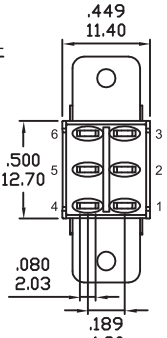
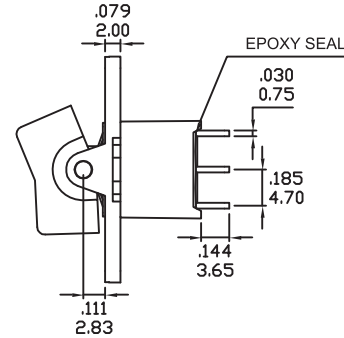
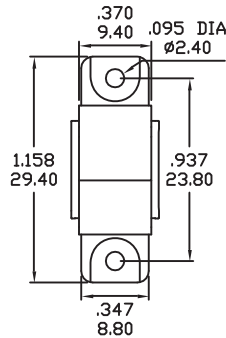
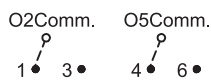


## DPDT

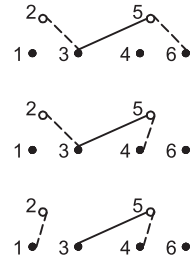
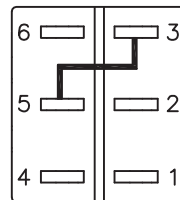


| Model No.   | Switching Position |      |         |
|-------------|--------------------|------|---------|
|             |                    |      |         |
| WDP-1       | ON                 | NONE | ON      |
| WDP-2       | ON                 | NONE | (ON)    |
| WDP-3       | ON                 | OFF  | ON      |
| WDP-4       | (ON)               | OFF  | (ON)    |
| WDP-5       | ON                 | OFF  | (ON)    |
| Term. Comm. | 2-3,5-6            | OPEN | 2-1,5-4 |

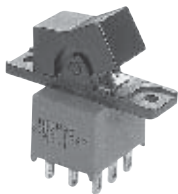
Schematic



WIRING FOR ON-ON-ON (3-WAY) FUNCTION

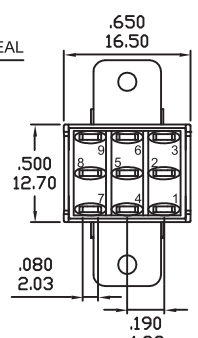
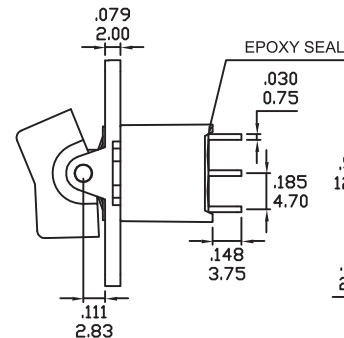
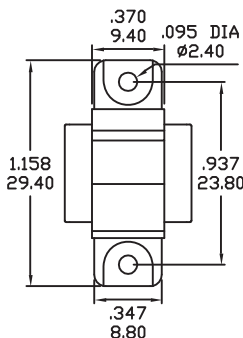


## 3PDT



| Model No.   | Switching Position |      |         |
|-------------|--------------------|------|---------|
|             |                    |      |         |
| W3P-1       | ON                 | NONE | ON      |
| W3P-2       | ON                 | NONE | (ON)    |
| W3P-3       | ON                 | OFF  | ON      |
| W3P-4       | (ON)               | OFF  | (ON)    |
| W3P-5       | ON                 | OFF  | (ON)    |
| Term. Comm. | 2-3,5-6            | OPEN | 2-1,5-4 |

Schematic

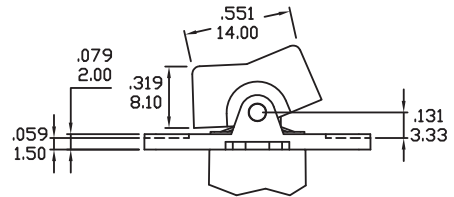
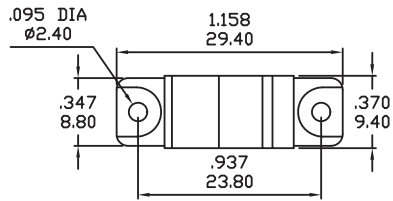
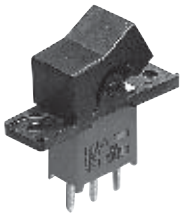


# Series 300A/C

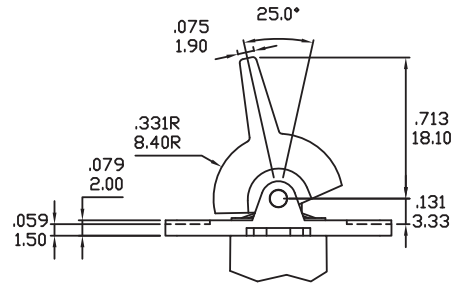
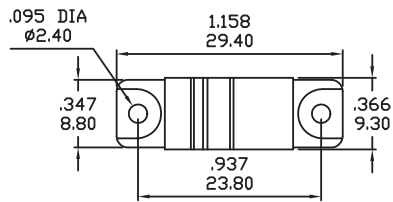
# (Sealed) Miniature Rocker & Paddle Switches

## ACTUATOR OPTIONS FOR PANEL REAR MOUNT

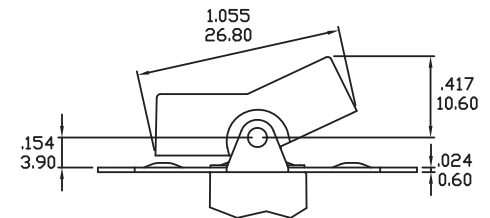
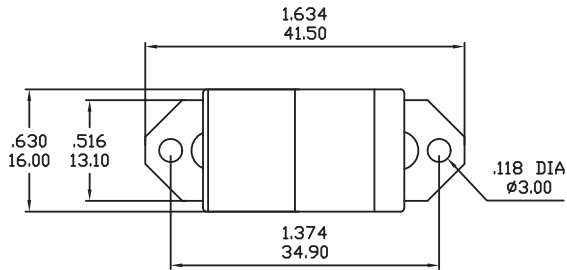
R1



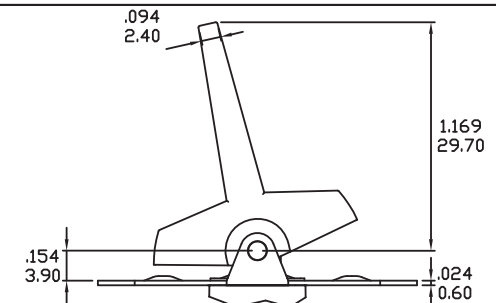
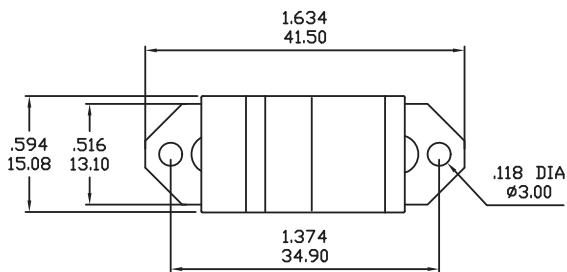
R2



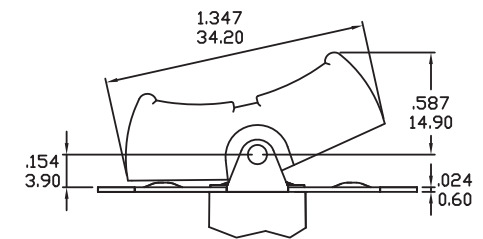
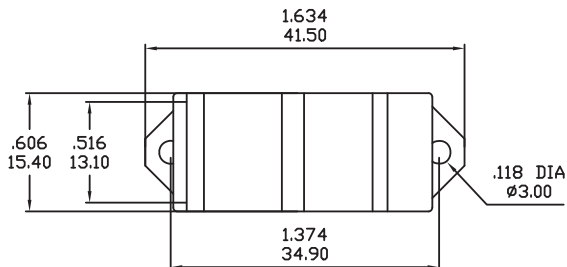
R3



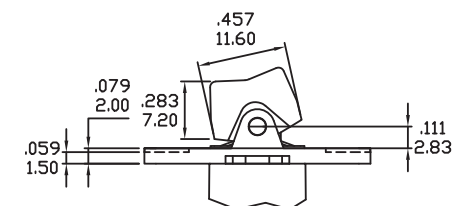
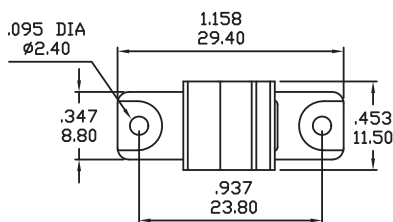
R4



R5

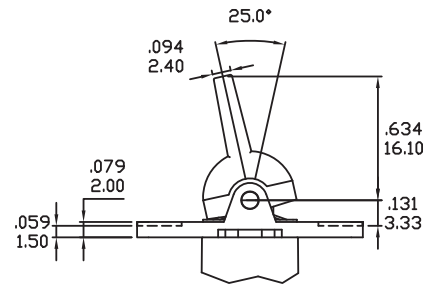
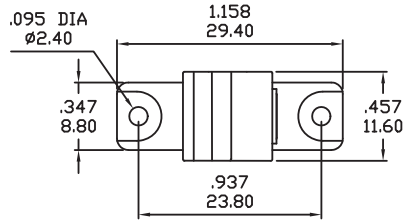


R6



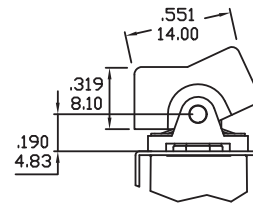
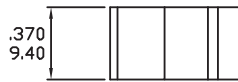
ACTUATOR OPTIONS FOR PANEL REAR MOUNT

R7

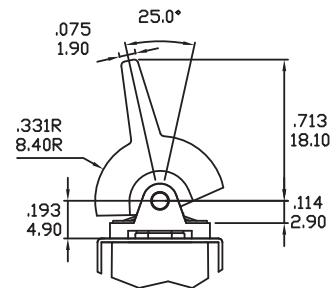


ACTUATOR OPTIONS FOR P.C MOUNT

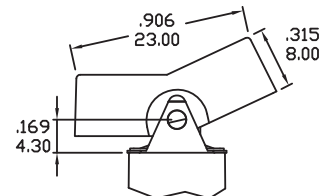
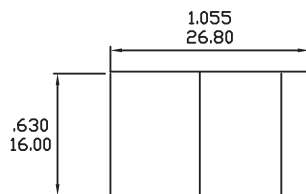
R1



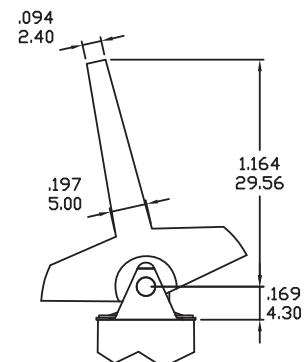
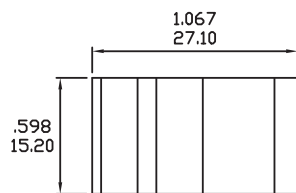
R2



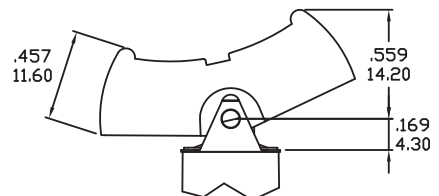
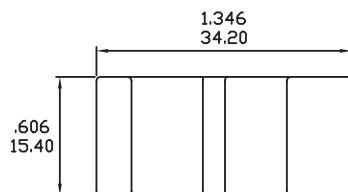
R3



R4



R5

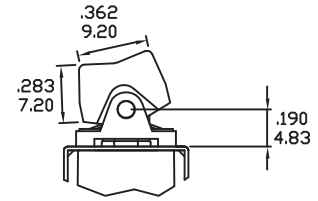
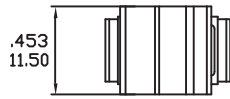


# Series 300A/C

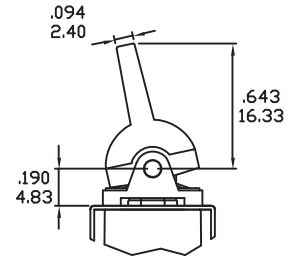
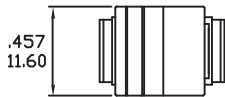
# (Sealed) Miniature Rocker & Paddle Switches

## ACTUATOR OPTIONS FOR P.C MOUNT

R6

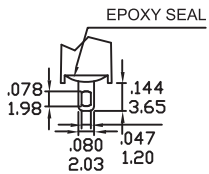


R7



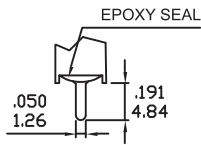
## TERMINATION OPTIONS

M1 STD. SOLDER LUG



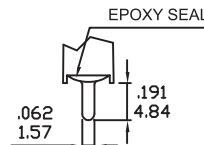
THK .030 (0.75)

M2 PC THRU-HOLE



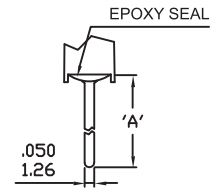
THK .030 (0.75)

M3 QUICK CONNECT



THK .030 (0.75)

M5 WIRE WRAP



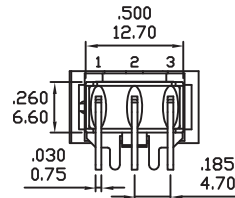
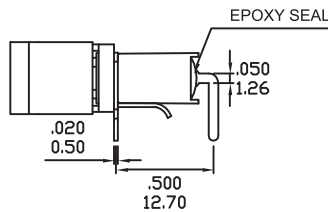
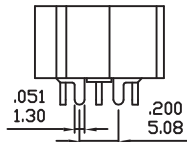
THK .030 (0.75)

| OPTION CODE | DIM.'A'      |
|-------------|--------------|
| M5-1        | .711(18.05)  |
| M5-2        | .924(23.48)  |
| M5-3        | .386(9.80)   |
| M5-4        | 1.022(25.97) |

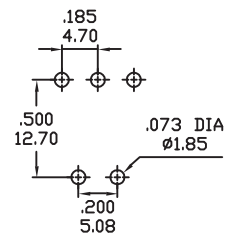
M6



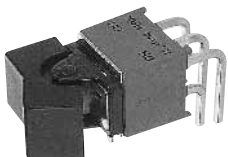
SPDT



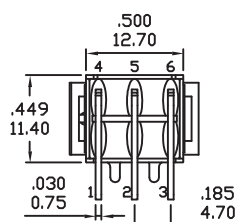
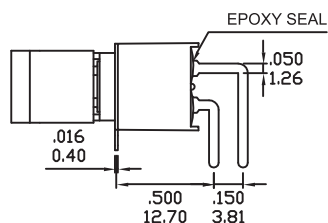
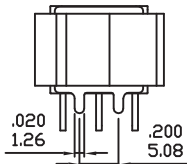
P.C.MOUNTING



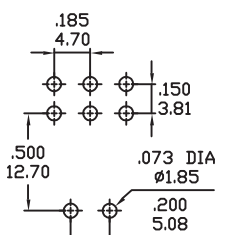
M6



DPDT



P.C.MOUNTING

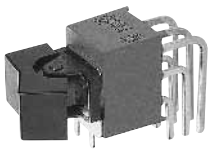


# Series 300A/C

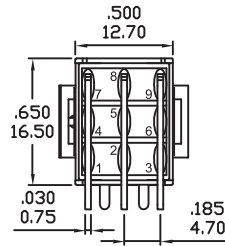
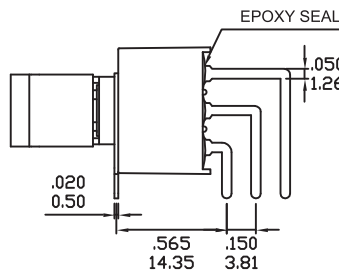
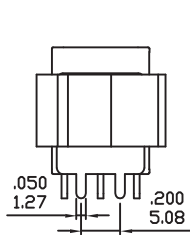
# (Sealed) Miniature Rocker & Paddle Switches

## TERMINATION OPTIONS

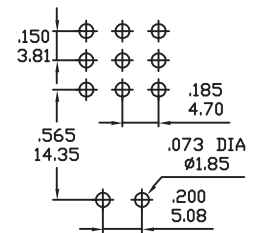
M6



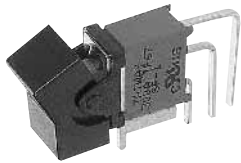
3PDT



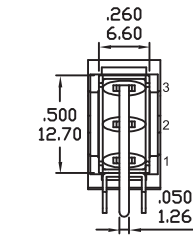
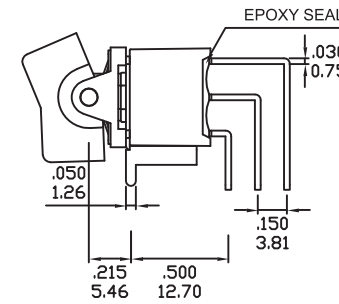
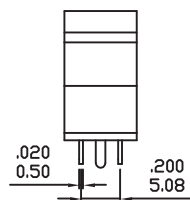
P.C.MOUNTING



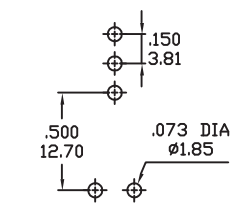
M7



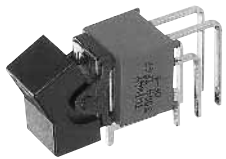
SPDT



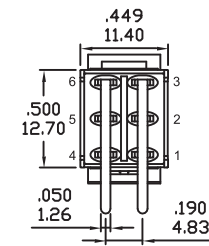
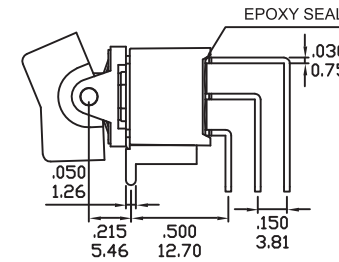
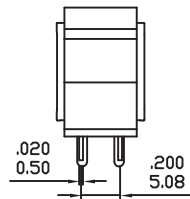
P.C.MOUNTING



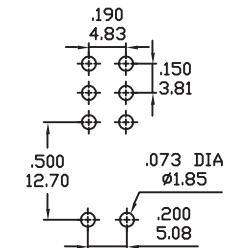
M7



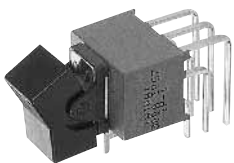
DPDT



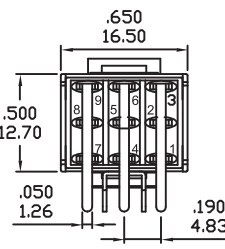
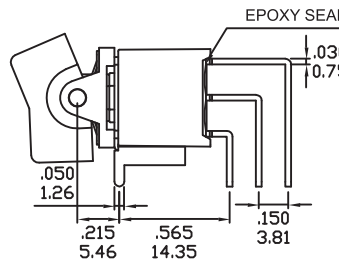
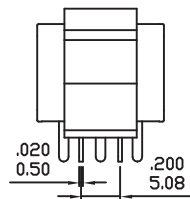
P.C.MOUNTING



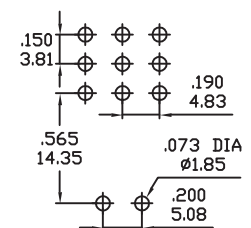
M7



3PDT



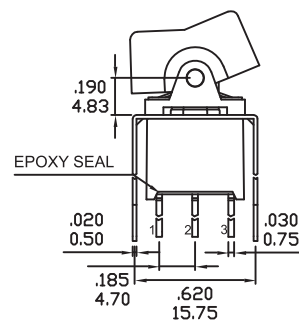
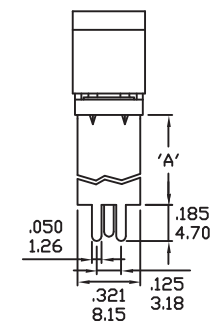
P.C.MOUNTING



VS2-VS3

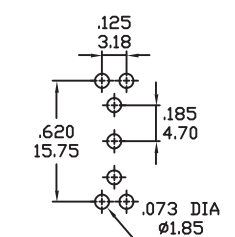


SPDT



| OPTION CODE | DIM.'A'       |
|-------------|---------------|
| VS2         | .461<br>11.70 |
| VS3         | .630<br>16.00 |

P.C.MOUNTING

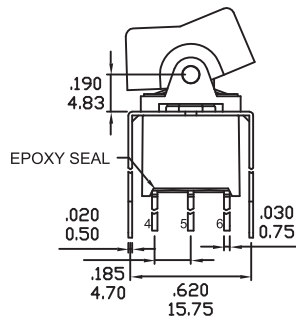
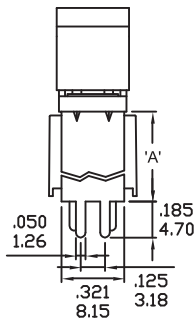


**TERMINATION OPTIONS**

**VS2-VS3**

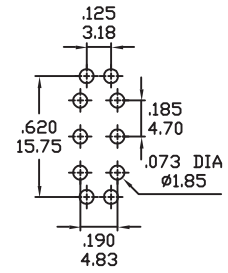


DPDT



| OPTION CODE | DIM.'A'       |
|-------------|---------------|
| VS2         | .461<br>11.70 |
| VS3         | .630<br>16.00 |

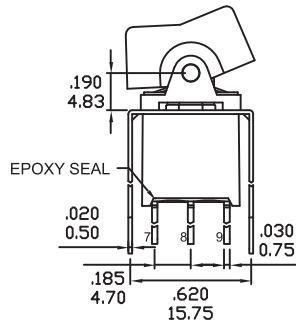
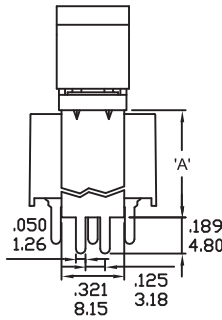
P.C.MOUNTING



**U2-VS3**

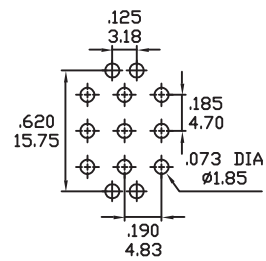


3PDT

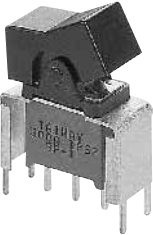


| OPTION CODE | DIM.'A'       |
|-------------|---------------|
| U2          | .551<br>14.00 |
| VS3         | .630<br>16.00 |

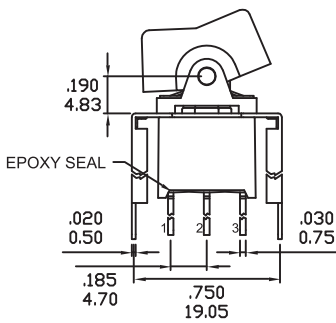
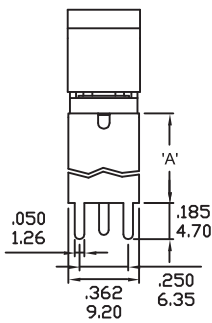
P.C.MOUNTING



**VS4-VS5**

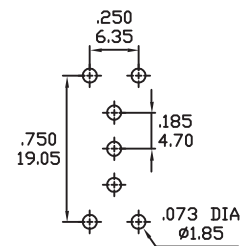


SPDT

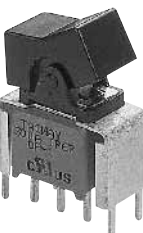


| OPTION CODE | DIM.'A'       |
|-------------|---------------|
| VS4         | .461<br>11.70 |
| VS5         | .630<br>16.00 |

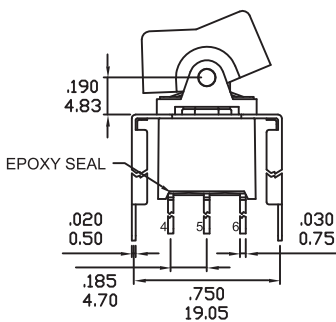
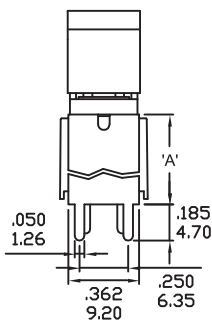
P.C.MOUNTING



**VS4-VS5**

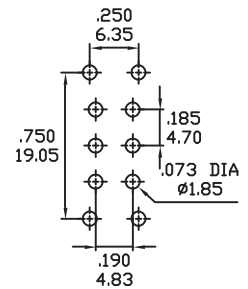


DPDT



| OPTION CODE | DIM.'A'       |
|-------------|---------------|
| VS4         | .461<br>11.70 |
| VS5         | .630<br>16.00 |

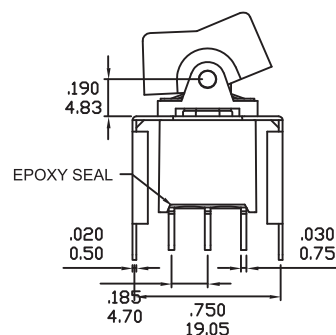
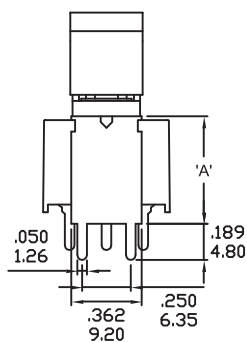
P.C.MOUNTING



**U4-VS5**

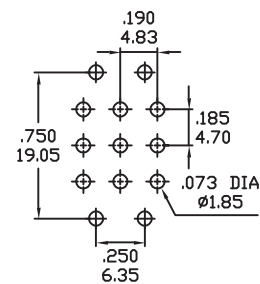


3PDT



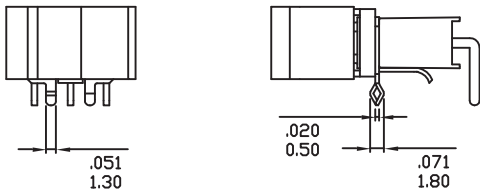
| OPTION CODE | DIM.'A'       |
|-------------|---------------|
| U4          | .551<br>14.00 |
| VS5         | .630<br>16.00 |

P.C.MOUNTING

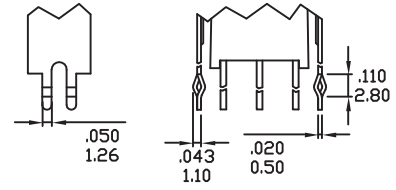


**SNAP-IN TERMINATION OPTIONS**

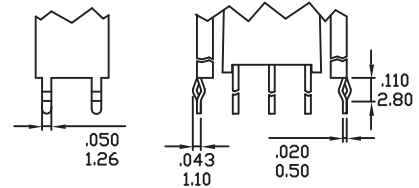
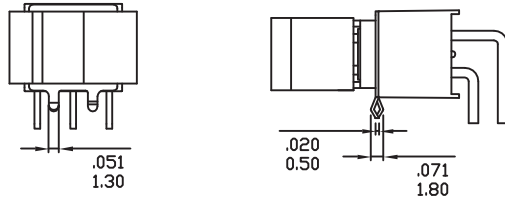
**M61**



**VS21,VS31**




**VS41,VS51**



\* PC Mounting for M61,M71,VS21,VS31,VS41,VS51 refer to M6,M7,VS2,VS3,VS4,VS5 respectively.

**CONTACT MATERIAL OPTIONS**

| Coding   | Contact Material    | Terminal Plating                       | Rating                                    | Agency Approvals  |
|----------|---------------------|--|---|---|
| <b>G</b> | Silver <sup>1</sup> | Gold over silver <sup>3</sup>          | 5Amps @ 125VAC or 28VDC<br>2Amps @ 250VAC |  <b>IP67</b> |
| <b>P</b> |                     | Tin plated <sup>5</sup> / <sub>7</sub> |   |   |
| <b>R</b> | Gold <sup>2</sup>   | Gold plated <sup>4</sup>               | 0.4VA max @ 20V max<br>(AC or DC)         | <b>IP67</b>   |
| <b>K</b> |                     | Tin plated <sup>5</sup> / <sub>6</sub> |   |   |

\* Standard G plating for sealed product.

1. Movable Contact: Copper alloy, silver plated.
2. Movable Contact: Copper alloy with gold plated over nickel plated.
3. Terminals: Silver plated with outer layer in gold plating.
4. Terminals: Copper alloy, with gold plated over nickel plated.
5. Outer Terminals: Copper alloy with pure tin plated.
6. Terminal Contact: Gold plated over nickel plated.
7. Terminal Contact: Palladium nickel alloy (or Silver) plated.

\* P, K not available with M1 and M3 terminals

\* 6Amps (Movable Contact: coin silver, silver plated) available to model ON-NONE-ON without UL approval

\* IP67 protection for 300A series only