

SPECIFICATIONS:

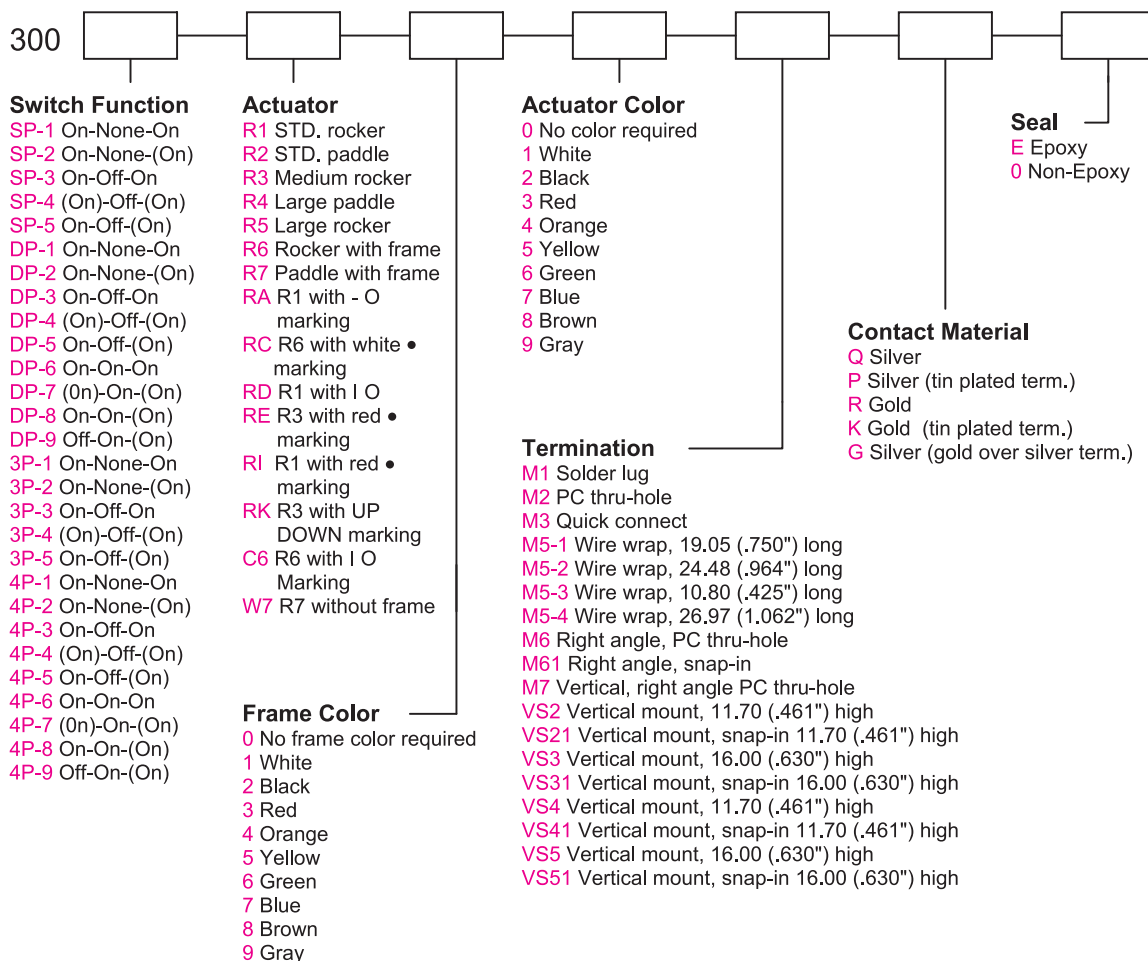
CONTACT RATING: Refer to "Contact Material Options" for more info.
 ELECTRICAL LIFE: 50,000 make-and-break cycles at full load.
 CONTACT RESISTANCE: 10m Ω max. initial @ 2-4VDC.
 100mA for both silver and gold plated contacts.
 INSULATION RESISTANCE: 1,000M Ω min.
 DIELECTRIC STRENGTHS: 1,500V RMS @ sea level.
 OPERATING TEMPERATURE:-30°C to + 85°C.

MATERIALS:

CASE: Diallyl phthalate(DAP)(UL 94V-0).
 ROCKERS: Nylon 6/6 or ABS.
 BUSHING: Zinc, nickel plated.
 HOUSING: Stainless steel.
 FRONT/REAR MOUNTING: Stainless steel.
 SWITCH SUPPORT: Brass, tin plated.
 TERMINAL SEAL: Epoxy.

If your preferred product configuration is not shown, please contact our sales representative for custom design.

HOW TO ORDER SYSTEM

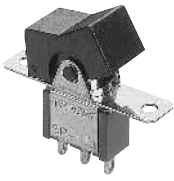


Specifications and Dimensions subject to change

Series 300

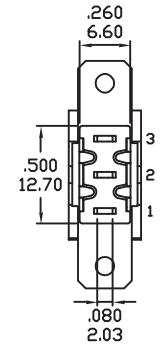
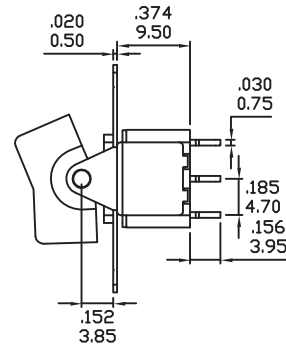
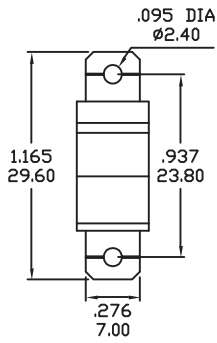
Miniature Rocker & Paddle Switches

SPDT

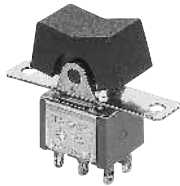


Model No.	Switching Position		
SP-1	ON	NONE	ON
SP-2	ON	NONE	(ON)
SP-3	ON	OFF	ON
SP-4	(ON)	OFF	(ON)
SP-5	ON	OFF	(ON)
Term. Comm.	2-3	OPEN	2-1

Schematic O2Comm.



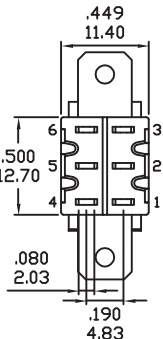
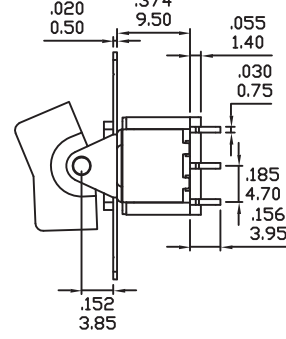
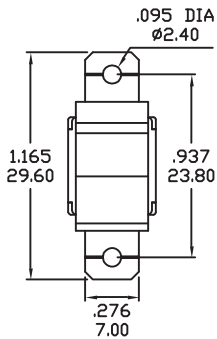
DPDT



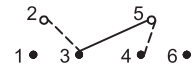
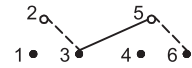
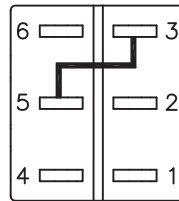
Model No.	Switching Position		
DP-1	ON	NONE	ON
DP-2	ON	NONE	(ON)
DP-3	ON	OFF	ON
DP-4	(ON)	OFF	(ON)
DP-5	ON	OFF	(ON)
Term. Comm.	2-3,5-6	OPEN	2-1,5-4

Model No.	Switching Position		
DP-6	ON	ON	ON
DP-7	(ON)	ON	(ON)
DP-8	ON	ON	(ON)
DP-9	OFF	ON	(ON)
Term. Comm.	2-3,5-6	2-3,5-4	2-1,5-4

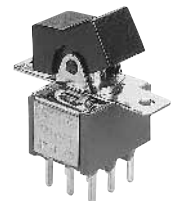
Schematic



WIRING FOR ON-ON-ON (3-WAY) FUNCTION

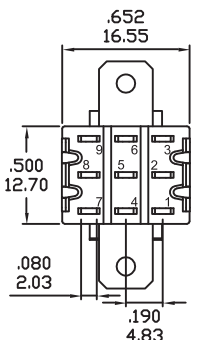
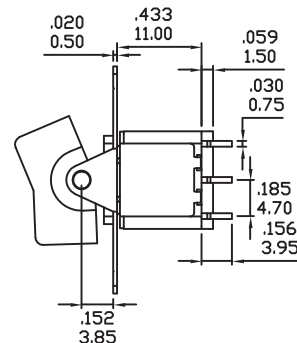
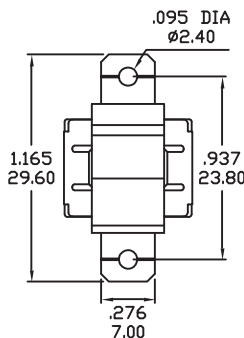


3PDT



Model No.	Switching Position		
3P-1	ON	NONE	ON
3P-2	ON	NONE	(ON)
3P-3	ON	OFF	ON
3P-4	(ON)	OFF	(ON)
3P-5	ON	OFF	(ON)
Term. Comm.	2-3,5-6 8-9	OPEN	2-1,5-4 8-7

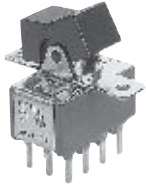
Schematic



Series 300

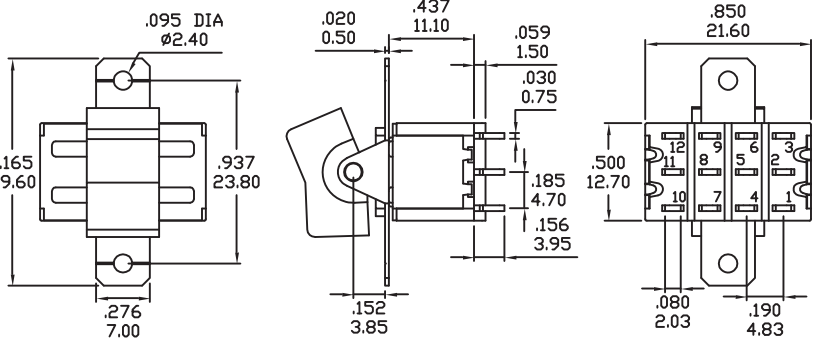
Miniature Rocker & Paddle Switches

4PDT

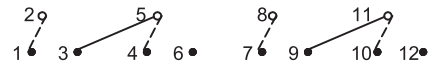
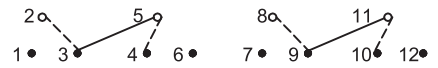
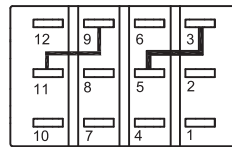


Model No.	Switching Position		
4P-1	ON	NONE	ON
4P-2	ON	NONE	(ON)
4P-3	ON	OFF	ON
4P-4	(ON)	OFF	(ON)
4P-5	ON	OFF	(ON)
Term. Comm.	2-3,5-6 8-9, 11-12	OPEN	2-1,5-4 8-7, 11-10

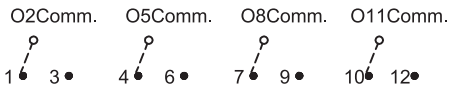
Model No.	Switching Position		
4P-6	ON	ON	ON
4P-7	(ON)	ON	(ON)
4P-8	ON	ON	(ON)
4P-9	OFF	ON	(ON)
Term. Comm.	2-3,5-6 8-9, 11-12	2-3,5-4 8-9, 11-10	2-1,5-4 8-7, 11-10



WIRING FOR ON-ON-ON (3-WAY) FUNCTION

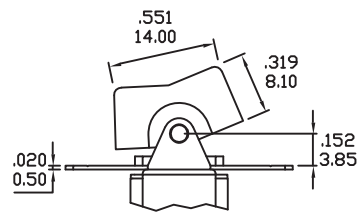
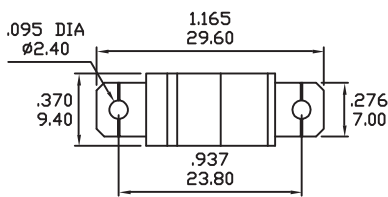
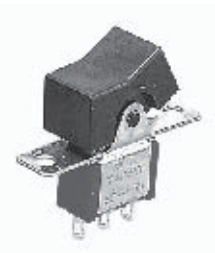


Schematic

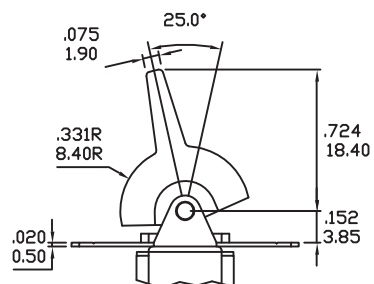
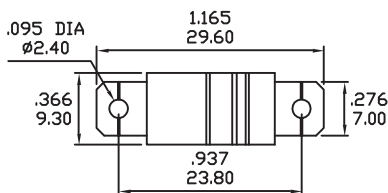


ACTUATOR OPTIONS FOR PANEL REAR MOUNT

R1

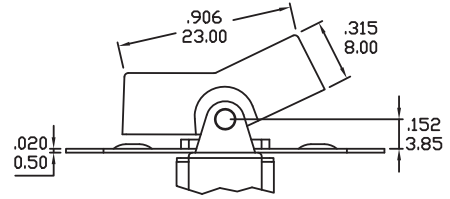
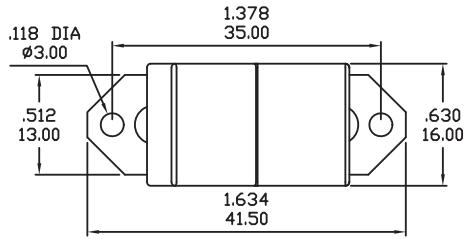
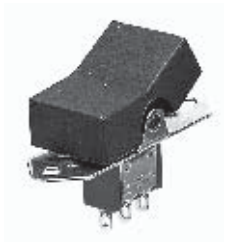


R2

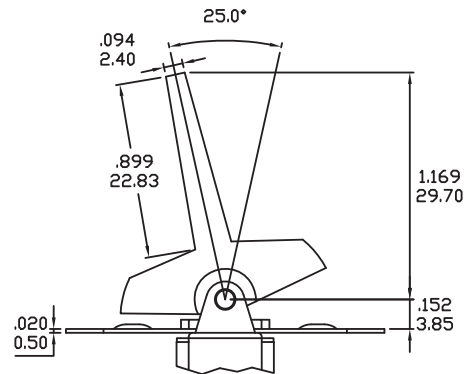
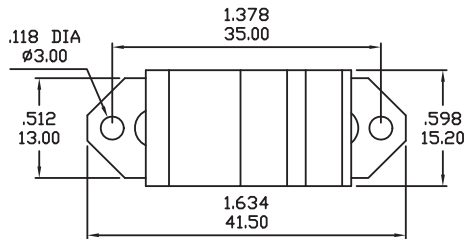


ACTUATOR OPTIONS FOR PANEL REAR MOUNT

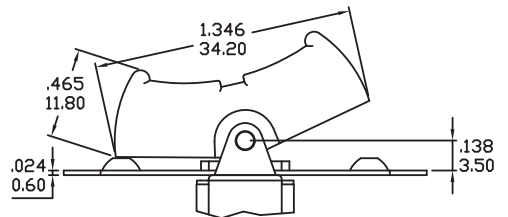
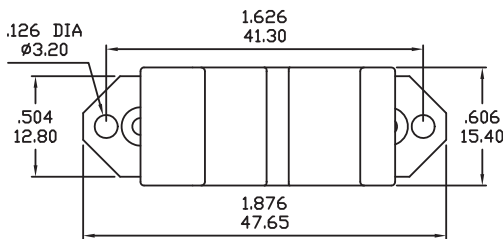
R3



R4



R5

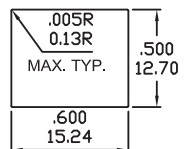
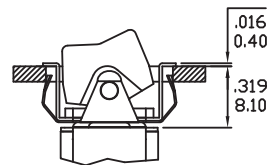
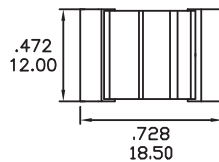
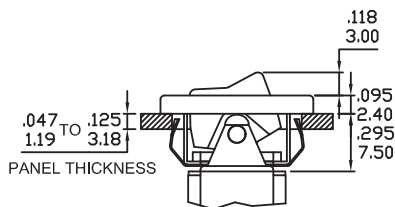
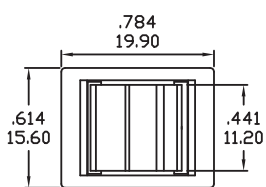


ACTUATOR OPTIONS FOR SNAP-IN FRONT MOUNT

R6

R6 WITHOUT FRAME

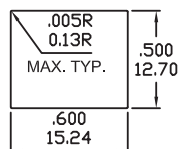
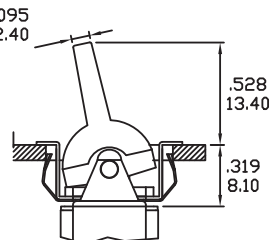
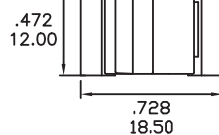
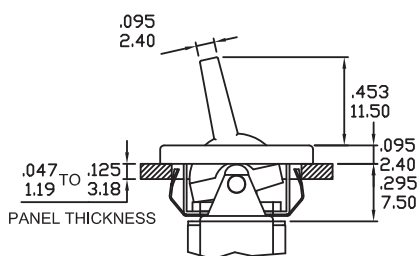
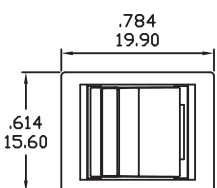
PANEL MOUNTING



R7

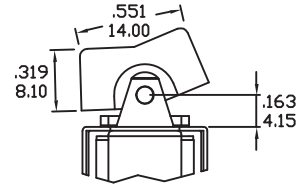
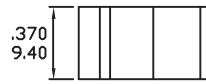
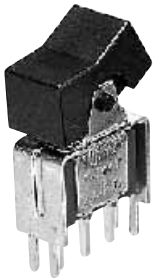
R7 WITHOUT FRAME

PANEL MOUNTING

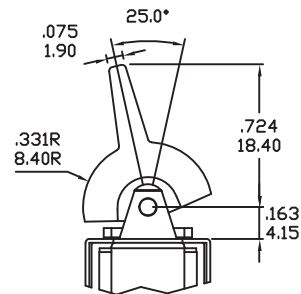
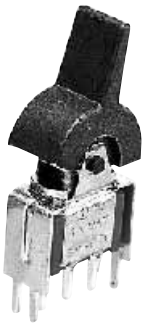


ACTUATOR OPTIONS FOR P.C. MOUNT

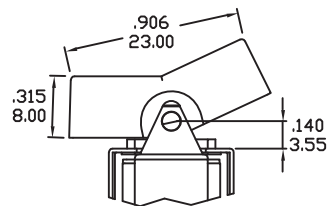
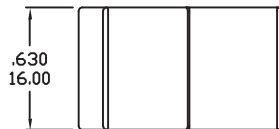
R1



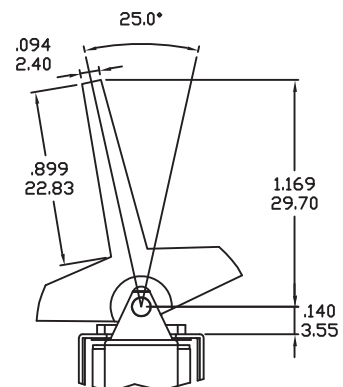
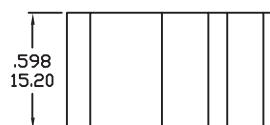
R2



R3

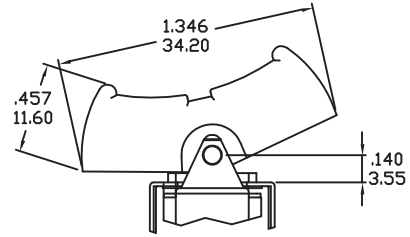
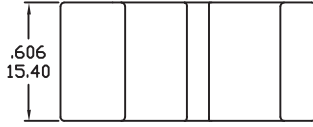
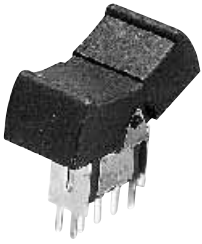


R4

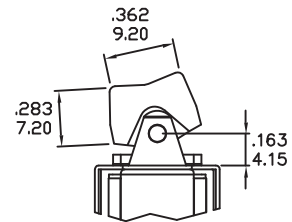
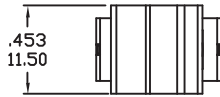
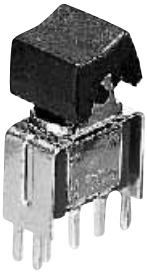


ACTUATOR OPTIONS FOR P.C. MOUNT

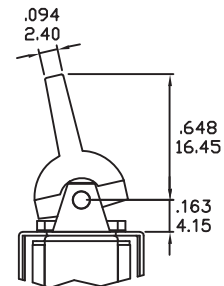
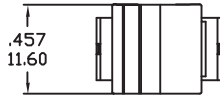
R5



R6

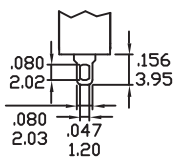


R7



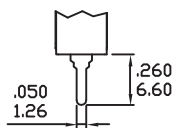
TERMINATION OPTIONS

M1 STD. SOLDER LUG



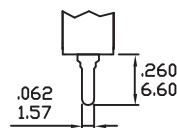
THK .030 (0.75)

M2 PC THRU-HOLE



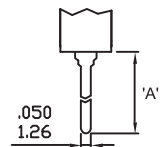
THK .030 (0.75)

M3 QUICK CONNECT



THK .030 (0.75)

M5 WIRE WRAP



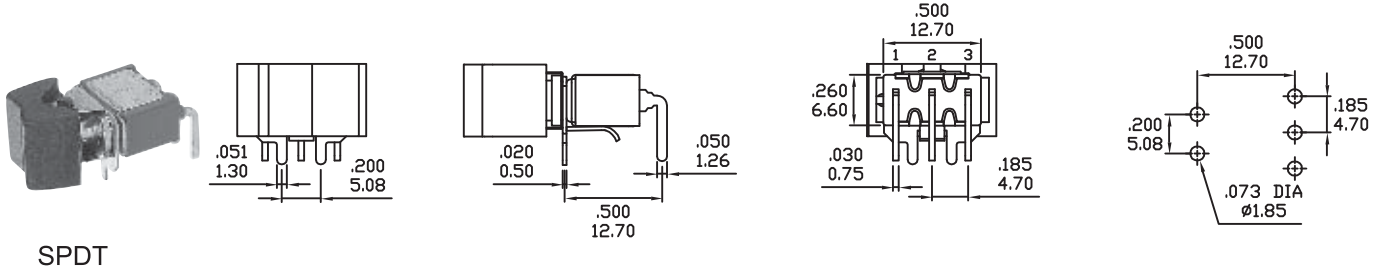
THK .030 (0.75)

OPTION CODE	DIM.'A'
M5-1	.750(19.05)
M5-2	.964(24.48)
M5-3	.425(10.80)
M5-4	1.062(26.97)

TERMINATION OPTIONS

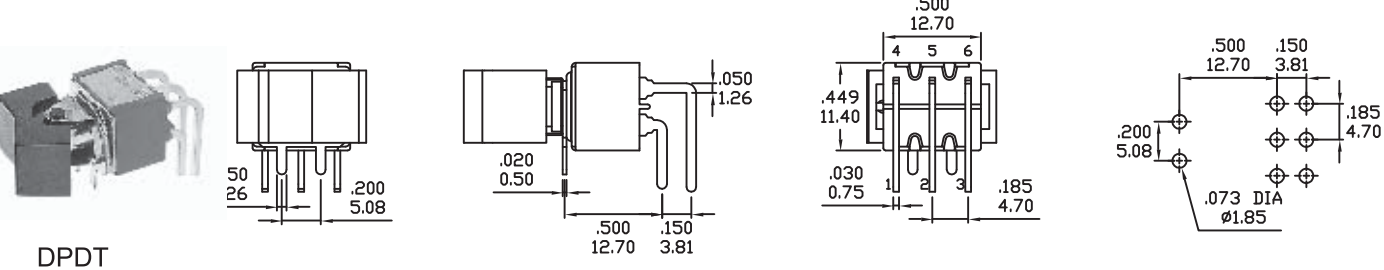
M6

P.C.MOUNTING



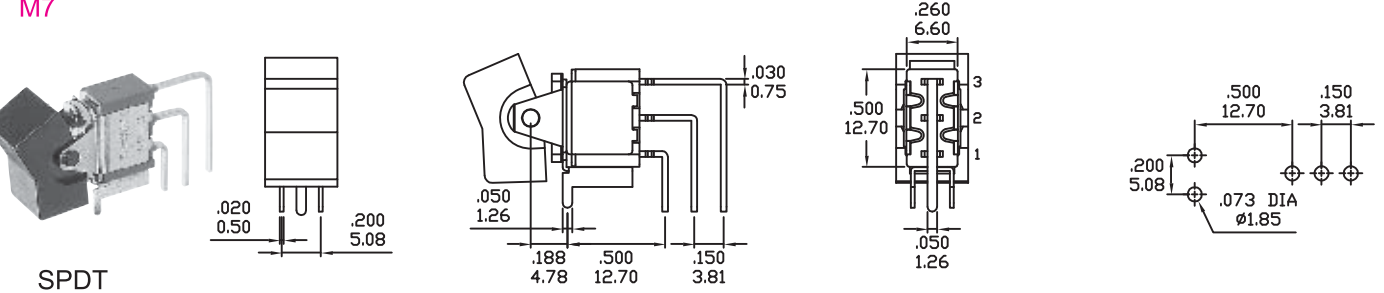
M6

P.C.MOUNTING



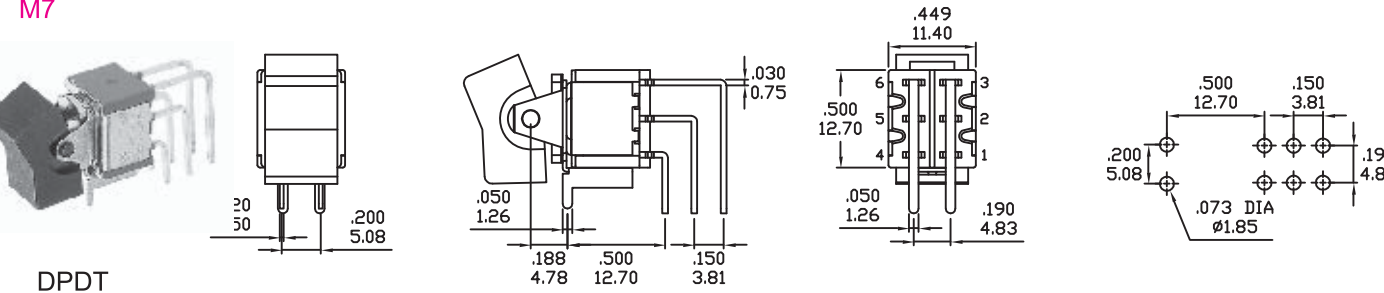
M7

P.C.MOUNTING



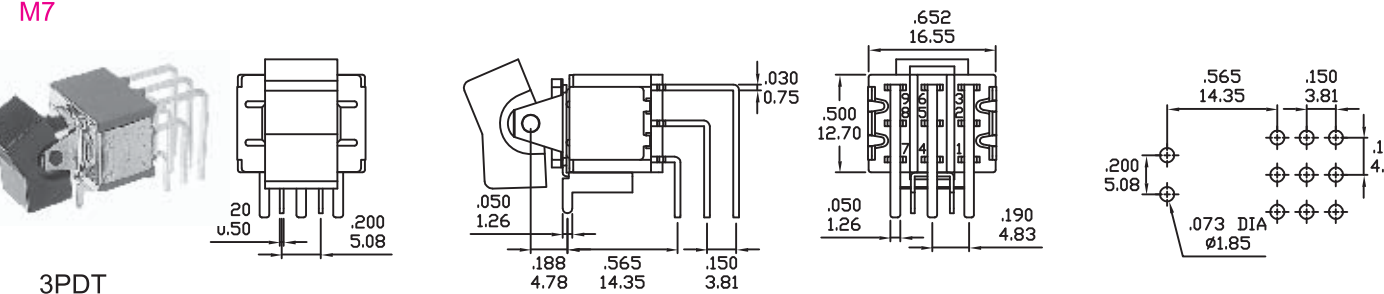
M7

P.C.MOUNTING



M7

P.C.MOUNTING

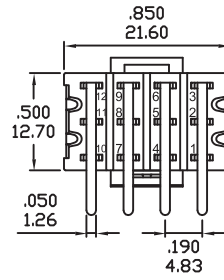
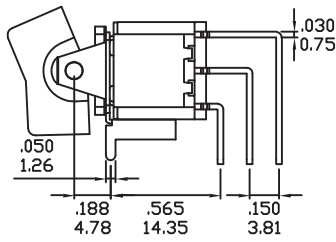
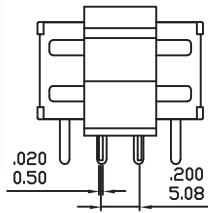


TERMINATION OPTIONS

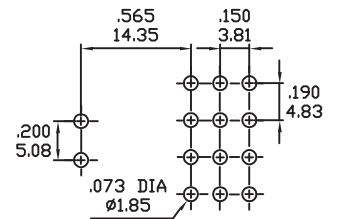
M7



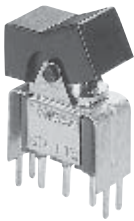
4PDT



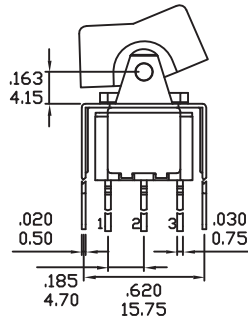
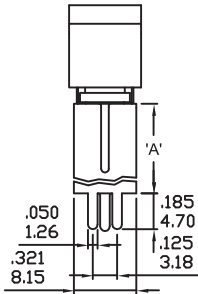
P.C.MOUNTING



VS2-VS3

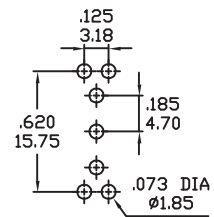


SPDT

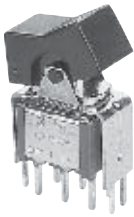


OPTION CODE	DIM.'A'
VS2	.461 11.70
VS3	.630 16.00

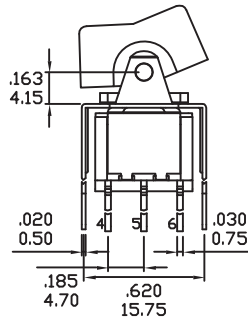
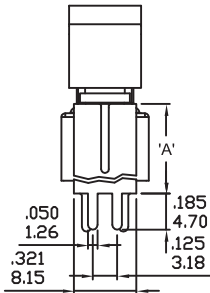
P.C.MOUNTING



VS2-VS3

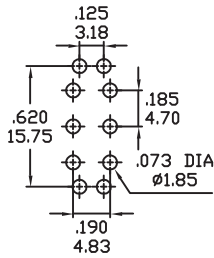


DPDT

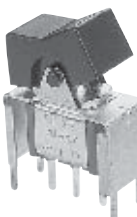


OPTION CODE	DIM.'A'
VS2	.461 11.70
VS3	.630 16.00

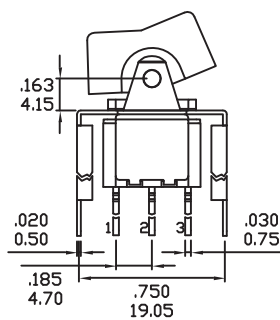
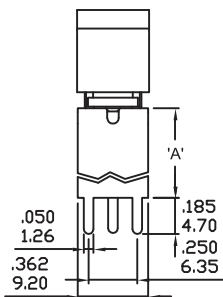
P.C.MOUNTING



VS4-VS5

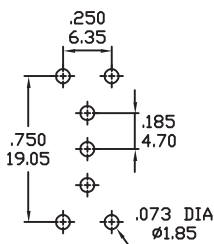


SPDT

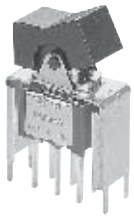


OPTION CODE	DIM.'A'
VS4	.461 11.70
VS5	.630 16.00

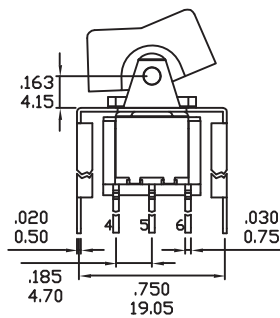
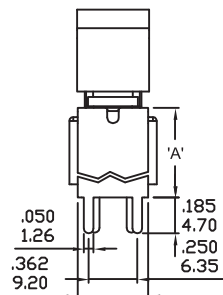
P.C.MOUNTING



VS4-VS5

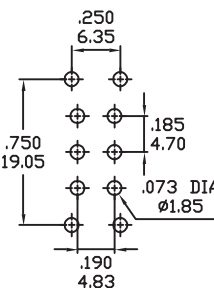


DPDT



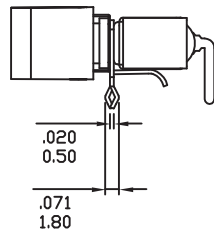
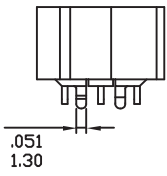
OPTION CODE	DIM.'A'
VS4	.461 11.70
VS5	.630 16.00

P.C.MOUNTING

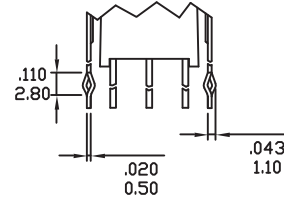
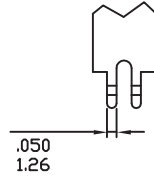


SNAP-IN TERMINATION OPTIONS

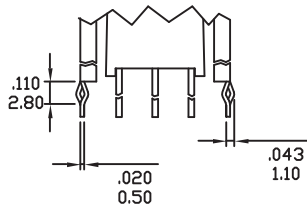
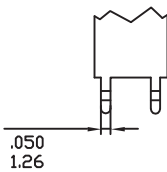
M61



VS21,VS31



VS41,VS51



* PC Mounting for M61,VS21,VS31,VS41,VS51 refer to M6,VS2,VS3,VS4,VS5 respectively.

CONTACT MATERIAL OPTIONS

Coding	Contact Material	Terminal Plating	Rating	Agency Approvals
Q	Silver ¹	Silver plated ¹	5Amps @ 125VAC or 28VDC 2Amps @ 250VAC	RI®
P		Tin plated ^{5/7}		
R	Gold ²	Gold plated ⁴	0.4VA max @ 20V max (AC or DC)	
K		Tin plated ^{5/6}		
G	Silver ¹	Gold over silver ³	5Amps @ 125VAC or 28VDC 2Amps @ 250VAC	RI®

- 1. Movable Contact / Terminals: Copper alloy, silver plated.
- 2. Movable Contact: Copper alloy with gold plated over nickel plated.
- 3. Terminals: Silver plated with outer layer in gold plating.
- 4. Terminals: Copper alloy, with gold plated over nickel plated.
- 5. Outer Terminals: Copper alloy with pure tin plated.
- 6. Terminal Contact: Gold plated over nickel plated.
- 7. Terminal Contact: Palladium nickel alloy (or Silver) plated.

* P, K not available with M1 and M3 terminals

* 6Amps (Movable Contact: coin silver, silver plated) available to model ON-NONE-ON without UL approval