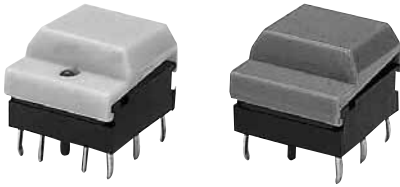
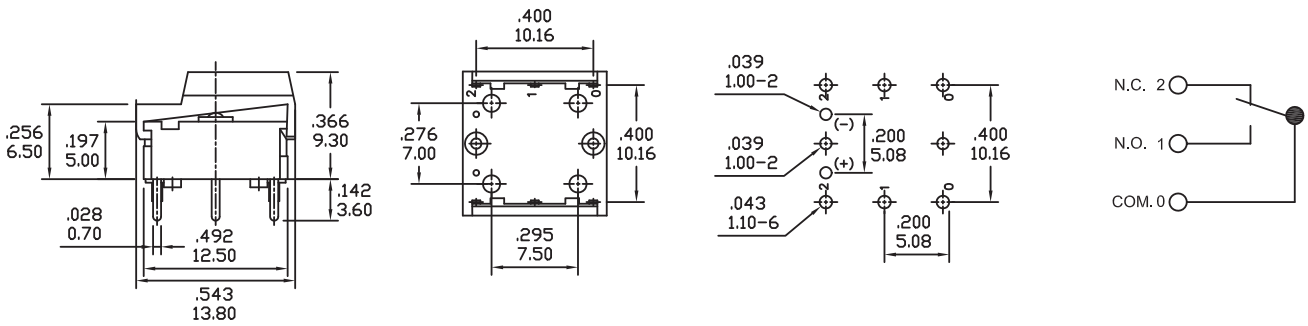


SPECIFICATIONS:

RATING: 50mA 24V DC (Minimum 1µA current is acceptable)
 INITIAL CONTACT RESISTANCE: 20m-ohms max. (AC 200µV, 5mA)
 DIELECTRIC STRENGTH: 250V AC 1 minute (Except between terminals of LED)
 INSULATION RESISTANCE: 100M-ohms min. (250V DC megger)
 ELECTRICAL LIFE: 200,000 operations (Rated voltage and current)
 STATIC CAPACITY: 1.5pF max. (1MHz)
 SHOCK RESISTANCE: 30G (3 directions perpendicular to each other 3 times for each direction)
 OPERATION TEMPERATURE RANGE: -25°C to +75°C

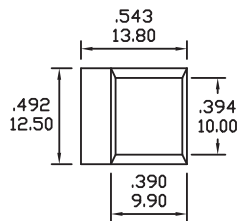


Specifications and Dimensions subject to change

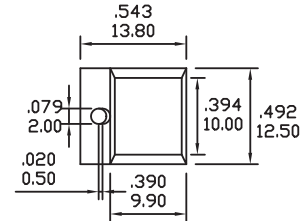


CAP STYLES

A0



A1



CAP COLORS

- 1=RED
- 2=YELLOW
- 3=GREEN
- 4=WHITE
- 5=BLACK
- 7=BLUE
- 8=Brown

LED COLORS

- 1=RED
- 2=YELLOW
- 3=GREEN

HOW TO ORDER

