

## SPECIFICATION:

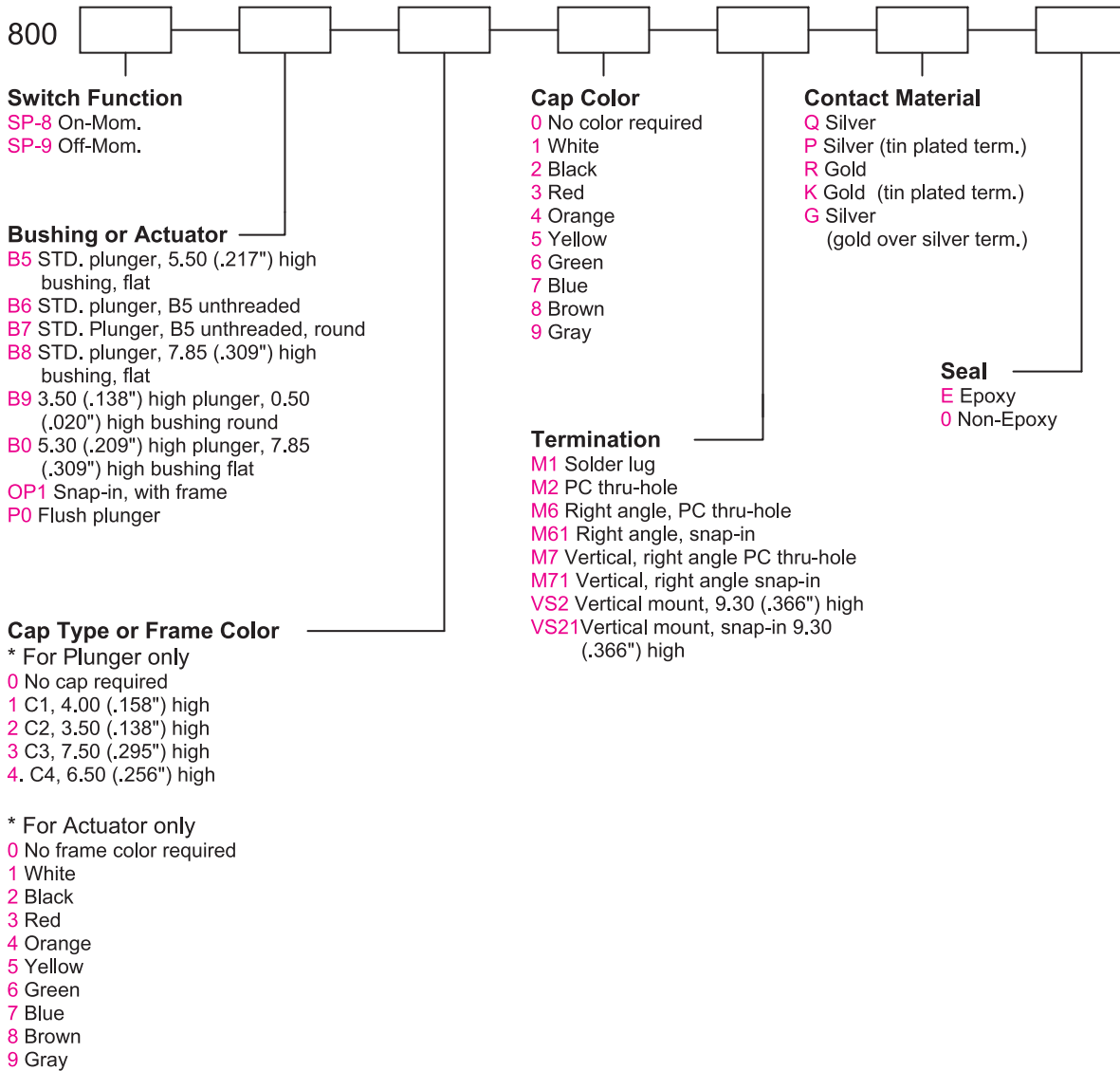
CONTACT RATING: Refer to "Contact Material Options" for more info.  
 ELECTRICAL LIFE: 30,000 make-and-break cycles at full load.  
 CONTACT RESISTANCE: 20m Ω max. initial @2-4 VDC  
 100mA for both silver and gold plated contacts.  
 INSULATION RESISTANCE: 1000M Ω min.  
 DIELECTRIC STRENGTH: 1500V RMS @ sea level.  
 OPERATING TEMPERATURE: -30°C to + 85°C.

## MATERIALS:

CASE: Diallyl phthalate(DAP)(UL 94V-0).  
 PLUNGER: Polybutylene terephthalate (PBT) or Nylon 6/6.  
 BUSHING: Brass, nickel plated.  
 SWITCH SUPPORT: Brass, tin plated.  
 HOUSING: Stainless steel.  
 TERMINAL SEAL: Epoxy.

If your preferred product configuration is not shown, please contact our sales representative for custom design.

## HOW TO ORDER SYSTEM



Specifications and Dimensions subject to change

# Series 800

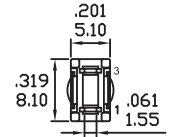
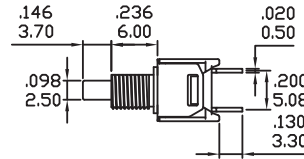
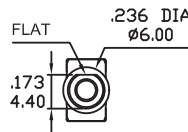
# Sub-Miniature Pushbutton Switches

## SPST



Model No.	Type	
SP-9	OFF	MOM

Schematic

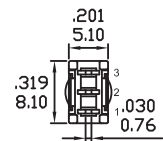
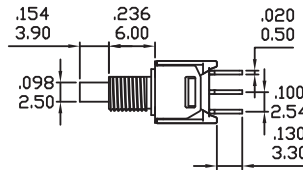
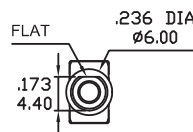


## SPDT



Model No.	Type	
SP-8	ON	MOM
Term. Comm.	2-1	2-3

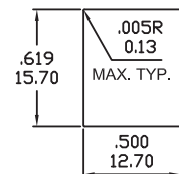
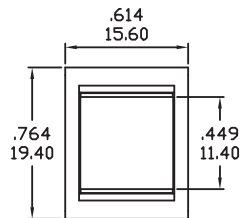
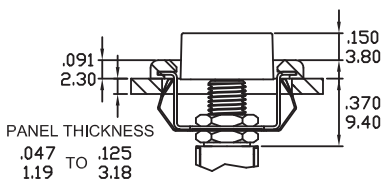
Schematic



## ACTUATOR OPTIONS FOR SNAP-IN FRONT MOUNT

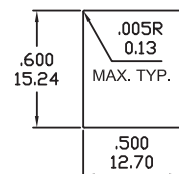
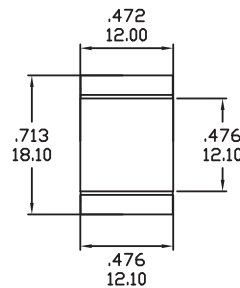
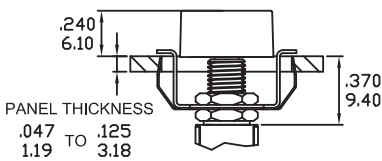
### OP1

### PANEL MOUNTING



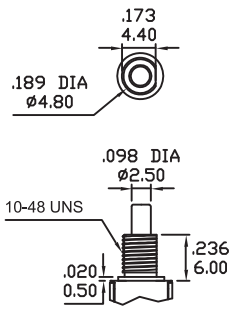
### OP1 WITHOUT FRAME

### PANEL MOUNTING

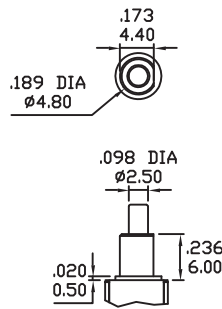


## BUSHING OPTIONS

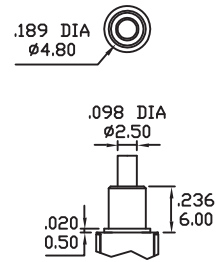
B5



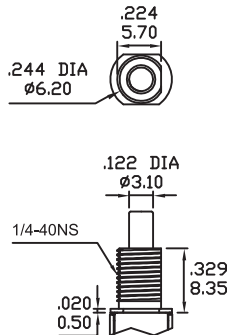
B6



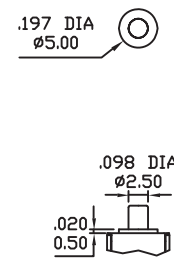
B7



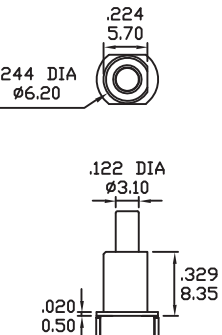
B8



B9

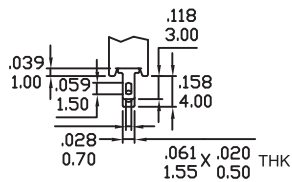


B0

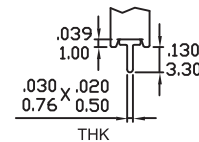


## TERMINATION OPTIONS

M1



M2

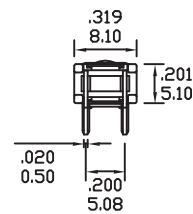
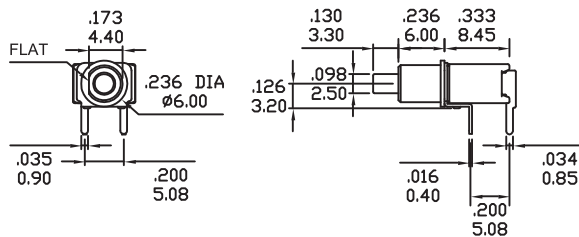


## TERMINATION OPTIONS

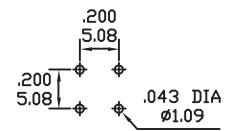
M6



SPST



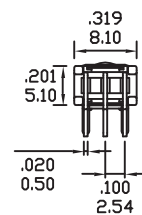
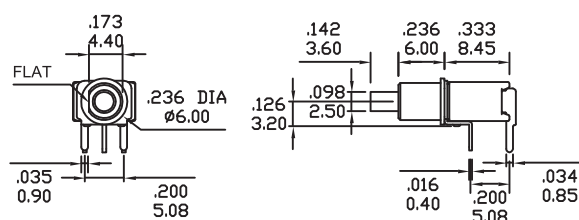
P.C.MOUNTING



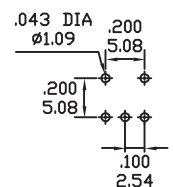
M6



SPDT

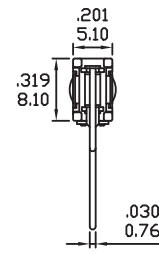
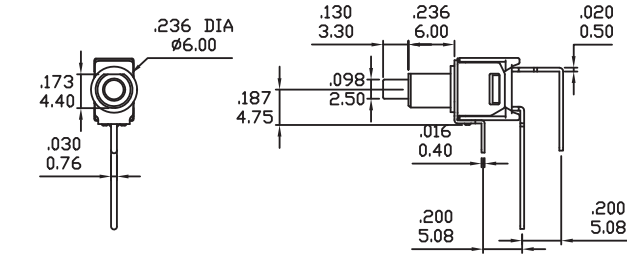


P.C.MOUNTING

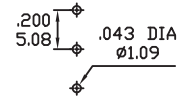


TERMINATION OPTIONS

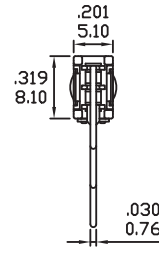
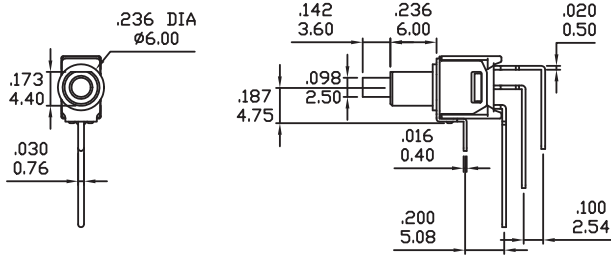
M7



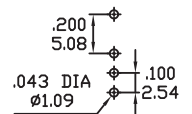
P.C.MOUNTING



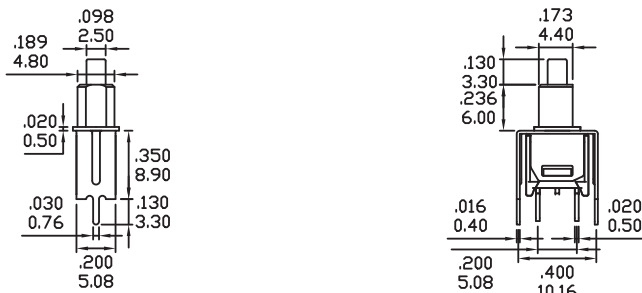
M7



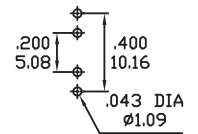
P.C.MOUNTING



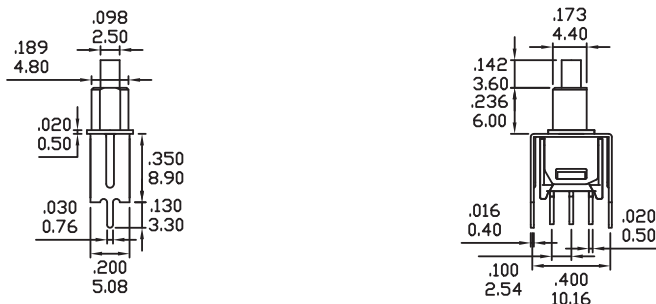
VS2



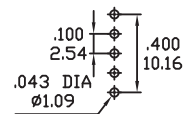
P.C.MOUNTING



VS2

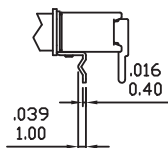


P.C.MOUNTING

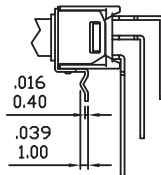


SNAP-IN TERMINATION OPTIONS

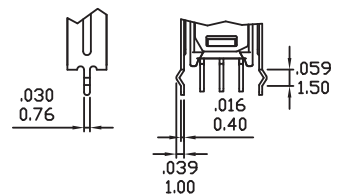
M61



M71



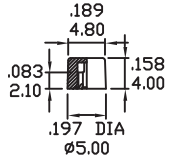
VS21



\* PC Mounting for M61, M71, VS21 refer to M6, M7, VS2 respectively.

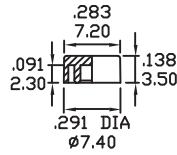
PLUNGER CAPS

C1



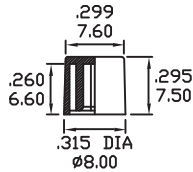
\* MATERIAL: ABS.

C2



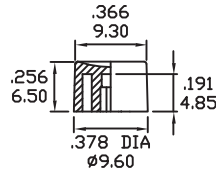
\* MATERIAL: ABS.

C3



\* MATERIAL: ABS.

C4



\* MATERIAL: ABS.

CAP AND FRAME COLORS	
1	White
2	Black
3	Red
4	Orange
5	Yellow
6	Green
7	Blue
8	Brown
9	Gray

\* C3 & C4 cap is only for plunger with B8 and B0 bushing.

CONTACT MATERIAL OPTIONS

Coding	Contact Material	Terminal Plating	Rating	Agency Approvals
Q	Silver <sup>1</sup>	Silver plated <sup>1</sup>	1Amps @ 125VAC or 28VDC	
P		Tin plated <sup>5</sup> / <sub>7</sub>		
R	Gold <sup>2</sup>	Gold plated <sup>4</sup>	0.4VA max @ 20V max (AC or DC)	
K		Tin plated <sup>5</sup> / <sub>6</sub>		
G	Silver <sup>1</sup>	Gold over silver <sup>3</sup>	1Amps @ 125VAC or 28VDC	

1. Movable Contact / Terminals: Copper alloy, silver plated.
2. Movable Contact: Copper alloy with gold plated over nickel plated.
3. Terminals: Silver plated with outer layer in gold plating.
4. Terminals: Copper alloy, with gold plated over nickel plated.
5. Outer Terminals: Copper alloy with pure tin plated.
6. Terminal Contact: Gold plated over nickel plated.
7. Terminal Contact: Palladium nickel alloy (or Silver) plated.

\* P, K is not available with M1 terminal.