

NEW !
IP 67 Protection

SPECIFICATIONS:

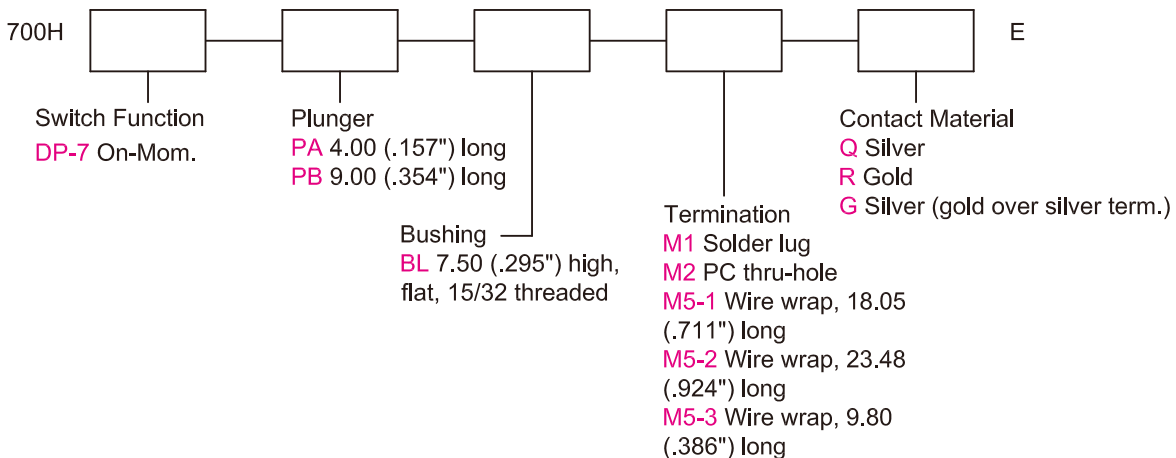
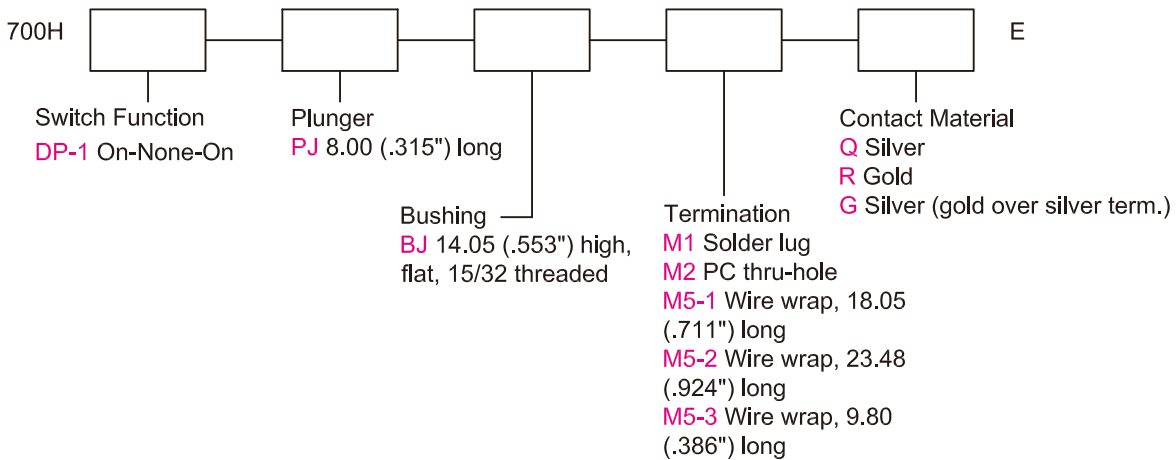
CONTACT RATING: Refer to "Contact Material Options" for more info.
 ELECTRICAL LIFE: Min. 50,000 make-and-break cycles at full load.
 CONTACT RESISTANCE: 10m-ohms max. initial @2-4VDC
 100mA for both silver and gold plated contacts.
 INSULATION RESISTANCE: 1,000M-ohms min.
 DIELECTRIC STRENGTH: 1,500VAC for 1 minute.
 OPERATING TEMPERATURE: -30° C to +85° C.

MATERIALS:

CASE: Diallyl phthalate(DAP)(UL 94V-0).
 PLUNGER: Brass, black finish with o-ring sealed.
 BUSHING: Brass, black finish with o-ring sealed.
 EXTERNAL SHELL: FR52 (UL 94V-0).
 TERMINAL SEAL: Epoxy.

If your preferred product configuration is not shown, please contact our sales representative for custom design.

HOW TO ORDER SYSTEM



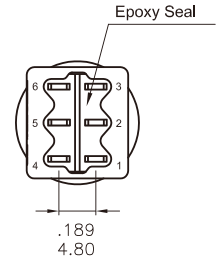
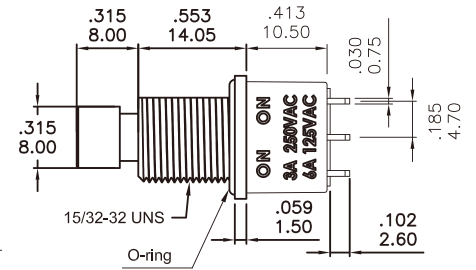
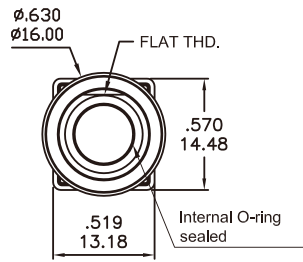
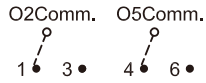
Series 700H

High Performance Pushbutton Switches

DPDT

Model No.	Switching Position		
DP-1	ON	NONE	ON
Term. Comm.	2-3,5-6	OPEN	2-1,5-4

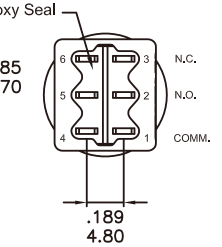
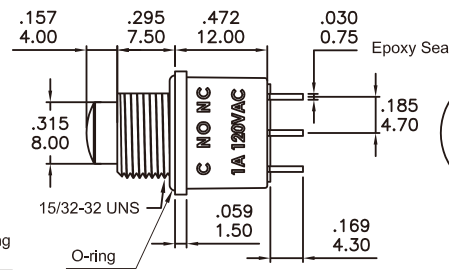
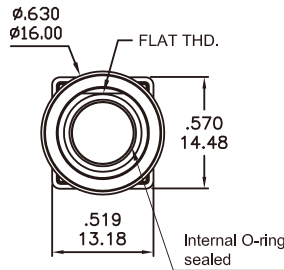
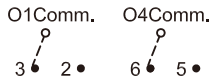
Schematic



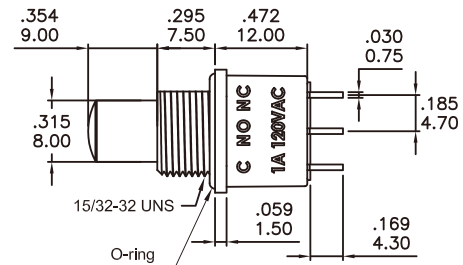
DPDT

Model No.	Switching Position	
DP-7	ON	MOM
Term. Comm.	1-3,4-6	1-2,4-5

Schematic



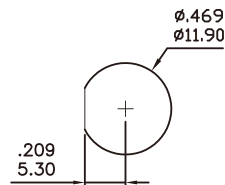
P/N: 700H-DP7-PA-BL-M1GE



P/N: 700H-DP7-PB-BL-M1GE

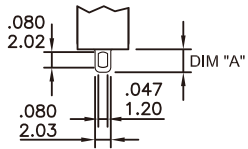
PANEL MOUNTING

15/32-32 UNS FLAT-CUT THD. BUSHING



TERMINATION OPTIONS

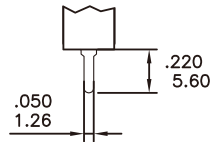
M1 STD. SOLDER LUG



THK .030 (0.75)

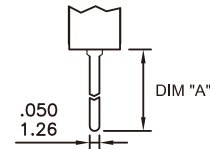
MODEL	DIM "A"
DP-1	.116(2.95)
DP-7	.183(4.65)

M2 PC THRU-HOLE



THK .030 (0.75)

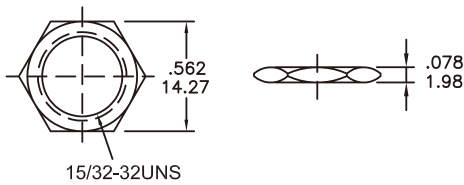
M5 WIRE WRAP



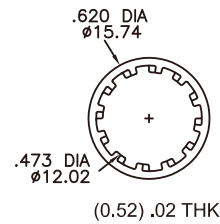
THK .030 (0.75)

OPTION CODE	DIM "A"
M5-1	.711(18.05)
M5-2	.924(23.48)
M5-3	.386(9.80)



NUT



LOCK WASHER



CONTACT MATERIAL OPTIONS

Coding	Contact Material	Terminal Plating	Rating	Agency Approvals
Q	Silver ¹	Silver plated ¹	(DP-1) 6Amps @ 125VAC or 28VDC 3Amps @ 250VAC (DP-7) 1Amps @ 120VAC or 38VDC	 IP67 (In-process)
R	Gold ²	Gold plated ⁴	0.4VA max @ 20V max (AC or DC)	
G	Silver ¹	Gold over silver ³	(DP-1) 6Amps @ 125VAC or 28VDC 3Amps @ 250VAC (DP-7) 1Amps @ 120VAC or 38VDC	 IP67 (In-process)

1. Movable Contact / Terminals: Copper alloy, silver plated.
2. Movable Contact: Copper alloy with gold plated over nickel plated.
3. Terminals: Silver plated with outer layer in gold plating.
4. Terminals: Copper alloy, with gold plated over nickel plated.