

SPECIFICATIONS:

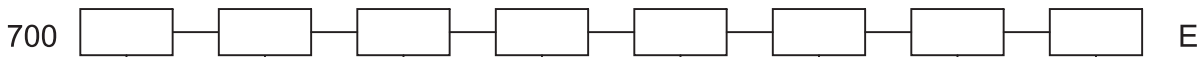
CONTACT RATING: Refer to "Contact Material Options" for more info.
 ELECTRICAL LIFE: 50,000 make-and-break cycles at full load.
 CONTACT RESISTANCE: 10mΩ max. initial @ 2-4 VDC
 100 mA for both silver and gold plated contacts.
 INSULATION RESISTANCE: 1,000MΩ min.
 DIELECTRIC STRENGTH: 1,500V RMS min. @ sea level.
 OPERATING TEMPERATURE: -30° C to +85° C.
 CAP INSTALLATION FORCE: 10 lbs, max.

MATERIALS:

CASE & BUSHING: PA9T or FR52, flame retardant, heat stabilized (94V-0).
 PLUNGER: Nylon 6/6 or PBT with internal o-ring sealed (700A).
 PLUNGER: Nylon 6/6 or PBT (700C).
 SWITCH SUPPORT: Brass or steel, tin plated.
 SWITCH SUPPORT RETAINER: Stainless steel.
 TERMINAL SEAL: Epoxy.

If your preferred product configuration is not shown, please contact our sales representative for custom design.

HOW TO ORDER SYSTEM



Series

- A Sealed, red case
- C Miniature Pushbutton gray case

Switch Function

- WSP-7 On-Mom.
- WDP-7 On-Mom.

Cap Type or Frame Color

- * For Plunger only
- 0 No cap required
- 1 C1, 7.50 (.295") high
- 2 C2, 6.40 (.252") high
- 3 C3, 4.16 (.164") high
- 4 C4, 4.00 (.157") high
- * For Actuator only
- 0 No frame color required
- 1 White
- 2 Black
- 3 Red
- 4 Orange
- 5 Yellow
- 6 Green
- 7 Blue
- 8 Brown
- 9 Gray

Plunger or Actuator

- P1 STD. plunger
- P2 Long plunger
- P3 Short plunger
- AP1 Snap-in
- AP2 Snap-in with frame
- AP3 Snap-in, with frame, flush cap

Cap Color

- 0 No color required
- 1 White
- 2 Black
- 3 Red
- 4 Orange
- 5 Yellow
- 6 Green
- 7 Blue
- 8 Brown
- 9 Gray

Bushing

- * For Plunger only
- B1 8.90 (.350") high, threaded
- B4 6.35 (.250") high unthreaded

Termination

- M1 Solder lug
- M2 PC thru-hole
- M5-1 Wire wrap, 19.05 (.750") long
- M5-2 Wire wrap, 24.48 (.964") long
- M5-3 Wire wrap, 10.80 (.425") long
- M5-4 Wire wrap, 26.97 (1.062") long
- M6 Right angle, PC thru-hole
- M61 Right angle, snap-in
- M7 Vertical, right angle PC thru-hole
- M71 Vertical, right angle snap-in
- VS2 Vertical mount, 11.70 (.461") high
- VS21 Vertical mount, snap-in 11.70 (.461") high
- VS3 Vertical mount, 16.00 (.630") high
- VS31 Vertical mount, snap-in 16.00 (.630") high
- VS4 Vertical mount, 11.70 (.461") high
- VS41 Vertical mount, snap-in 11.70 (.461") high
- VS5 Vertical mount, 16.00 (.630") high
- VS51 Vertical mount, snap-in 16.00 (.630") high

Contact Material

- Q Silver
- P Silver (tin plated term.)
- R Gold
- K Gold (tin plated term.)
- G Silver (gold over silver term.)

Note:

Q plating not available with 700A.

Series 700A/C

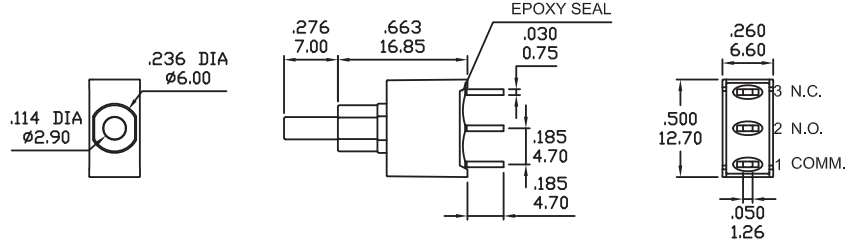
(Sealed) Snap-Acting Pushbutton Switches

SPDT



Model No.	Type	
WSP-7	ON	MOM
Term. Comm.	1-3	1-2

Schematic

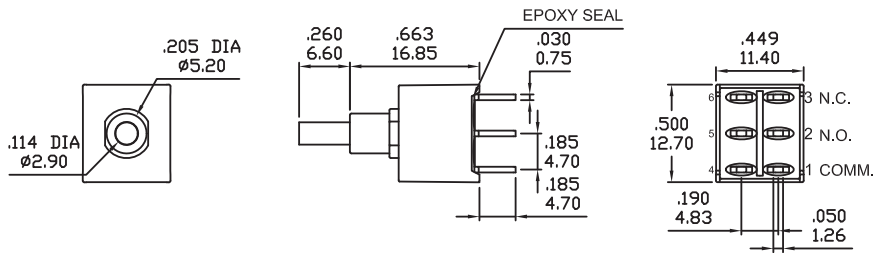
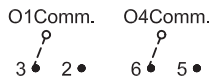


DPDT



Model No.	Type	
WDP-7	ON	MOM
Term. Comm.	1-3,4-6	1-2,4-5

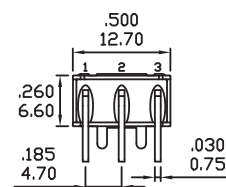
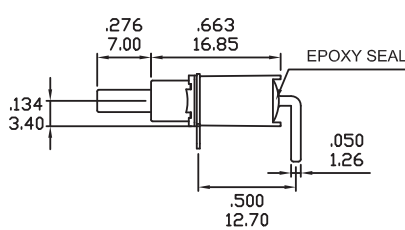
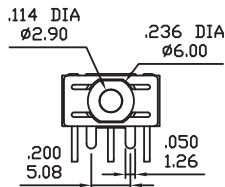
Schematic



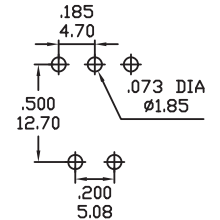
M6



SPDT



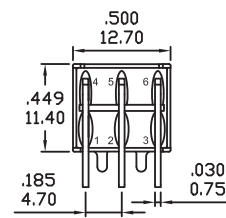
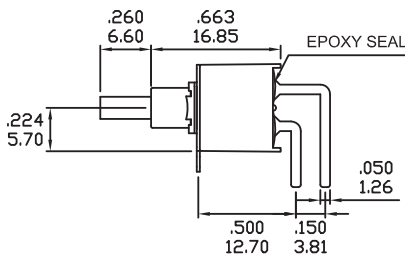
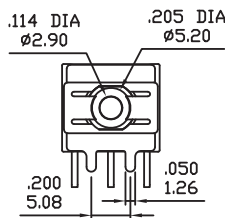
P.C.MOUNTING



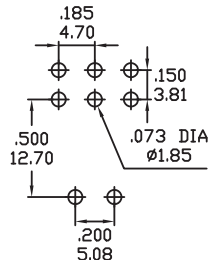
M6



DPDT

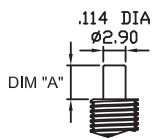


P.C.MOUNTING



PLUNGER OPTIONS

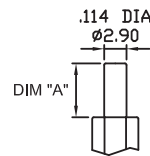
FOR B1 BUSHING



OPTION CODE	DIM. "A"
P1	.173 4.40
P2	.228 5.80
P2	.087 2.20

* Plunger length shown with SPDT model

FOR B4 BUSHING



OPTION CODE	DIM. "A"
P1	.276 7.00
P2	.323 8.20
P2	.181 4.60

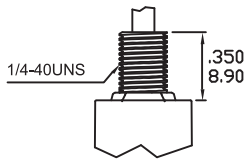
* Plunger length shown with SPDT model

Series 700A/C

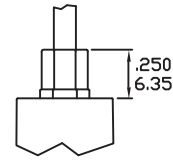
(Sealed) Snap-Acting Pushbutton Switches

BUSHING OPTIONS

B1

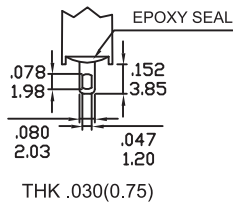


B4

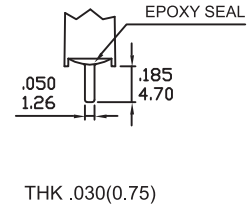


TERMINATION OPTIONS

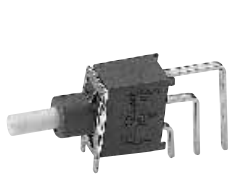
M1



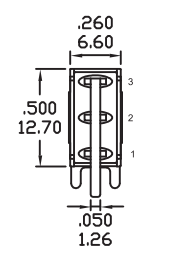
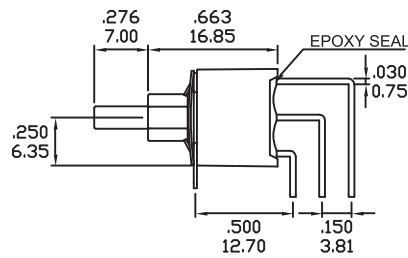
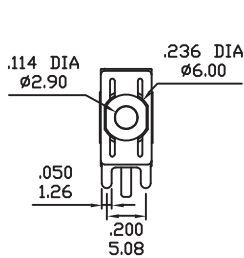
M2



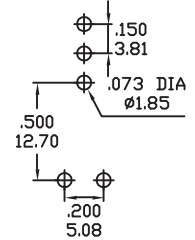
M7



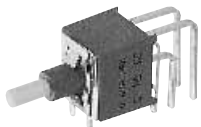
SPDT



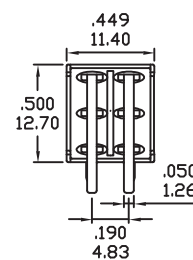
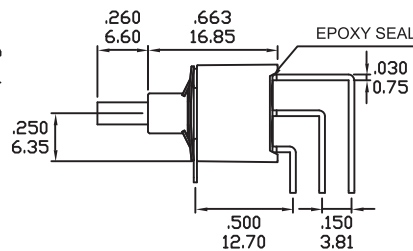
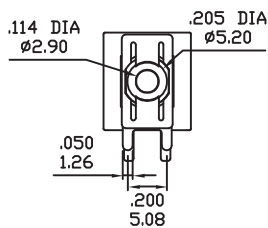
P.C.MOUNTING



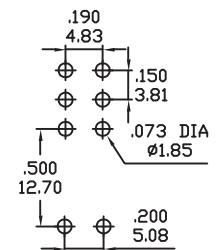
M7



DPDT



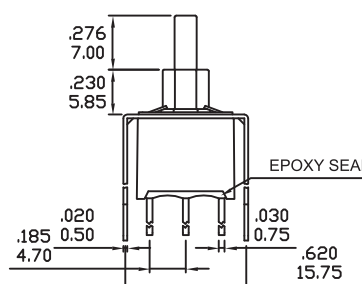
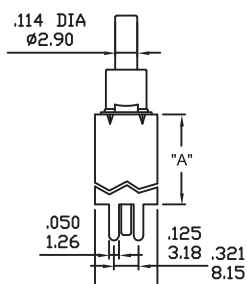
P.C.MOUNTING



VS2-VS3

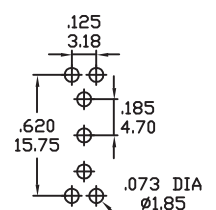


SPDT



OPTION CODE	DIM.'A'
VS2	.461 11.70
VS3	.630 16.00

P.C.MOUNTING

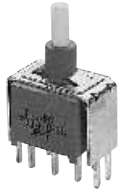


Series 700A/C

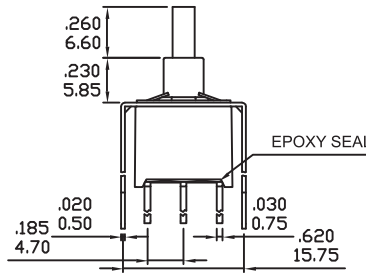
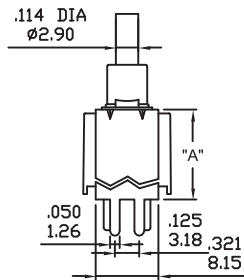
(Sealed) Snap-Acting Pushbutton Switches

TERMINATION OPTIONS

VS2-VS3

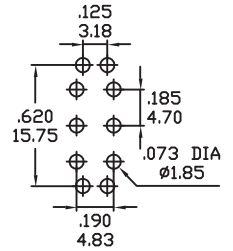


DPDT

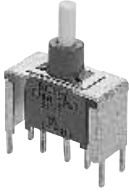


OPTION CODE	DIM.'A'
VS2	.461 11.70
VS3	.630 16.00

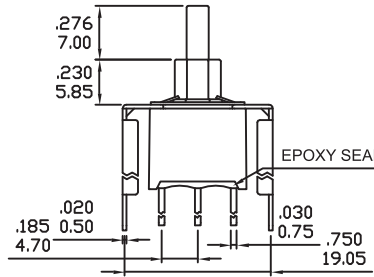
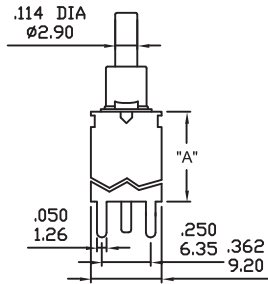
P.C.MOUNTING



VS4-VS5

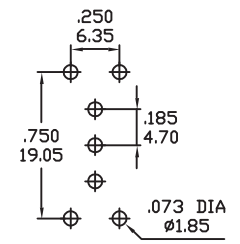


SPDT



OPTION CODE	DIM.'A'
VS4	.461 11.70
VS5	.630 16.00

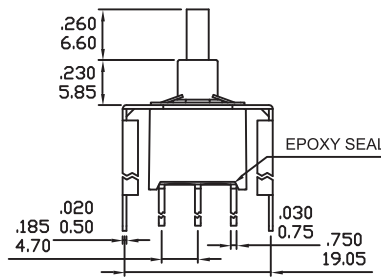
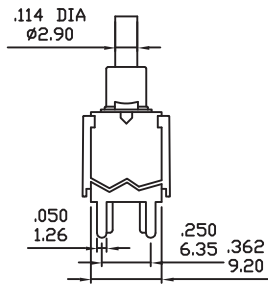
P.C.MOUNTING



VS4-VS5

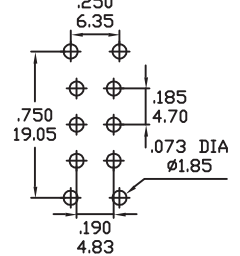


DPDT



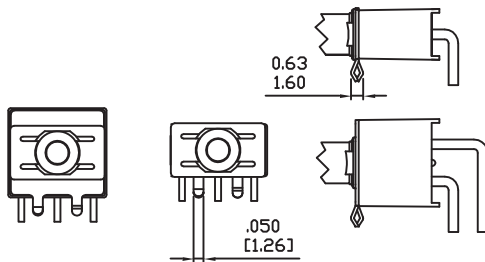
OPTION CODE	DIM.'A'
VS4	.461 11.70
VS5	.630 16.00

P.C.MOUNTING

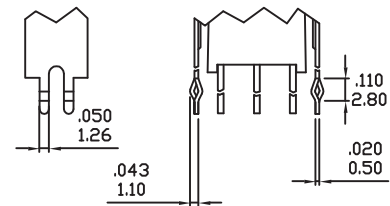


SNAP-IN TERMINATION OPTIONS

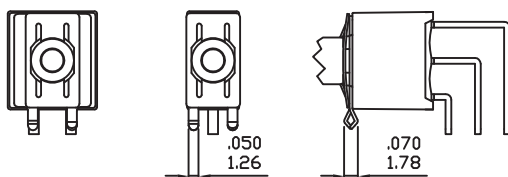
M61



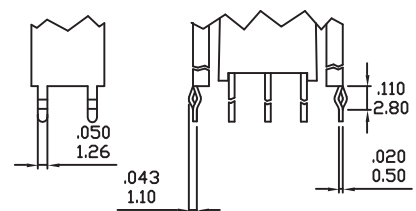
VS21,VS31



M71



VS41,VS51



* PC Mounting for M61,M71,VS21,VS31,VS41,VS51 refer to M6,M7,VS2,VS3,VS4,VS5 respectively.

Series 700A/C

(Sealed) Snap-Acting Pushbutton Switches

PLUNGER CAPS

C1	C2	C3	C4	CAP AND FRAME COLORS																				
<p>* MATERIAL: ABS.</p>	<p>* MATERIAL: ABS.</p>	<p>* MATERIAL: ABS.</p>	<p>* MATERIAL: ABS.</p>	<table border="1"> <thead> <tr> <th colspan="2">CAP AND FRAME COLORS</th> </tr> </thead> <tbody> <tr> <td>1</td> <td>White</td> </tr> <tr> <td>2</td> <td>Black</td> </tr> <tr> <td>3</td> <td>Red</td> </tr> <tr> <td>4</td> <td>Orange</td> </tr> <tr> <td>5</td> <td>Yellow</td> </tr> <tr> <td>6</td> <td>Green</td> </tr> <tr> <td>7</td> <td>Blue</td> </tr> <tr> <td>8</td> <td>Brown</td> </tr> <tr> <td>9</td> <td>Gray</td> </tr> </tbody> </table>	CAP AND FRAME COLORS		1	White	2	Black	3	Red	4	Orange	5	Yellow	6	Green	7	Blue	8	Brown	9	Gray
CAP AND FRAME COLORS																								
1	White																							
2	Black																							
3	Red																							
4	Orange																							
5	Yellow																							
6	Green																							
7	Blue																							
8	Brown																							
9	Gray																							

CONTACT MATERIAL OPTIONS

Coding	Contact Material	Terminal Plating	Rating	Agency Approvals
Q	Silver ¹	Silver plated ¹	1Amps @ 120VAC or 38VDC	IP68
R	Gold ²	Gold plated ³	0.4VA max @ 20V max (AC or DC)	IP68
G	Silver ¹	Gold over silver ⁴	1Amps @ 120VAC or 38VDC	IP68

* Standard G plating for sealed product.

1. Movable Contact / Terminals: Copper alloy, silver plated.
2. Movable Contact: Copper alloy with gold plated over nickel plated.
3. Terminals: Copper alloy, with gold plated over nickel plated.
4. Terminals: Silver plated with outer layer in gold plating.

* IP68 protection for 700A series only.