

SPECIFICATIONS:

CONTACT RATING: Refer to "Contact Material Options" for more info.
 ELECTRICAL LIFE: 50,000 make and break cycles at full load.
 CONTACT RESISTANCE: 10mΩ max. initial @ 2-4 VDC.
 INSULATION RESISTANCE: 1,000 MΩ min.
 DIELECTRIC STRENGTH: 1,500V RMS @ sea level.
 OPERATION TEMPERATURE: -30° C TO +85° C.

MATERIALS:

CASE: Diallyl phthalate(DAP)(UL 94V-0).
 PLUNGER: PBT or FR52 (UL 94V-0).
 BUSHING: Brass, nickel plated.
 HOUSING: Stainless steel.
 TERMINAL SEAL: Epoxy.

If your preferred product configuration is not shown, please contact our sales representative for custom design.

HOW TO ORDER SYSTEM

700

Switch Function

SP-7 On-Mom.
 DP-7 On-Mom.

Plunger or Actuator

P0 Flush plunger
 P1 STD. plunger
 P2 Short plunger
 AP1 Snap-in
 AP2 Snap-in with frame
 AP3 Snap-in, with frame, flush cap

Cap Type or Frame Color

* For Plunger only

0 No cap required
 1 C1, 7.50 (.295") high
 2 C2, 6.40 (.252") high
 3 C3, 11.70 (.461") high
 4 C4, 4.02 (.158") high

* For Actuator only

0 No frame color required
 1 White
 2 Black
 3 Red
 4 Orange
 5 Yellow
 6 Green
 7 Blue
 8 Brown
 9 Gray

Cap Color

0 No color required
 1 White
 2 Black
 3 Red
 4 Orange
 5 Yellow
 6 Green
 7 Blue
 8 Brown
 9 Gray

Bushing

* For plunger only
 B1 6.35 (.250") high, keyway
 B2 B1 unthreaded
 B3 6.35 (.250") high, flat
 B4 B3 unthreaded
 B6 4.50 (.177") high, unthreaded

Termination

M1 Solder lug
 M2 PC thru-hole
 M5-1 Wire wrap, 19.05 (.750") long
 M5-2 Wire wrap, 24.48 (.964") long
 M5-3 Wire wrap, 10.80 (.425") long
 M6 Right angle, PC thru-hole
 M61 Right angle, snap-in
 M7 Vertical, right angle PC thru-hole
 M71 Vertical, right angle snap-in
 VS2 Vertical mount, 11.70 (.461") high
 VS21 Vertical mount, snap-in 11.70 (.461") high
 VS3 Vertical mount, 16.00 (.630") high
 VS31 Vertical mount, snap-in 16.00 (.630") high
 VS4 Vertical mount, 11.70 (.461") high
 VS41 Vertical mount, snap-in 11.70 (.461") high
 VS5 Vertical mount, 16.00 (.630") high
 VS51 Vertical mount, snap-in 16.00 (.630") high
 VS6 Vertical mount, 11.70 (.461") high for B6 bushing
 VS7 Vertical mount, 16.00 (.630") high for B6 bushing
 VS8 Vertical mount, 11.70 (.461") high for B6 bushing
 VS9 Vertical mount, 16.00 (.630") high for B6 bushing

Contact Material

Q Silver
 P Silver (tin plated term.)
 R Gold
 K Gold (tin plated term.)
 G Silver (gold over silver term.)

Seal

E Epoxy
 0 Non-Epoxy

Specifications and Dimensions subject to change

Series 700

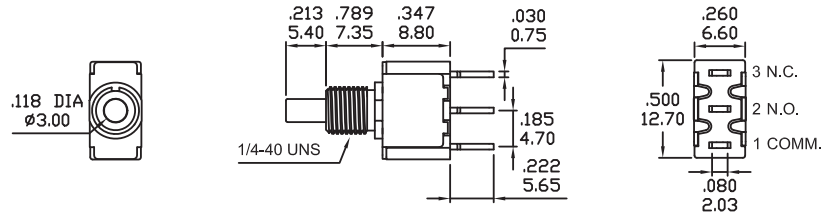
Snap-Acting Pushbutton Switches

SPDT

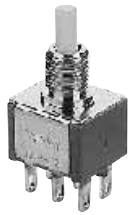


Model No.	Type	
SP-7	ON	MOM
Term. Comm.	1-3	1-2

Schematic

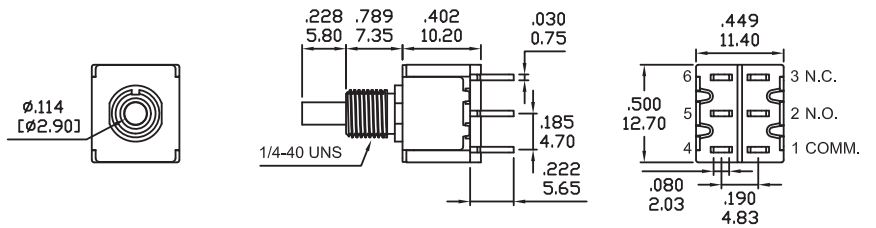
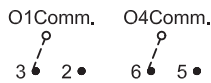


DPDT



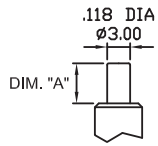
Model No.	Type	
DP-7	ON	MOM
Term. Comm.	1-3,4-6	1-2,4-5

Schematic



PLUNGER OPTIONS

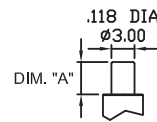
FOR B1,B2,B3,B4 ONLY



OPTION CODE	DIM. "A"
P0	.000 0.00
P1	.213 5.40
P2	.091 2.30

* Plunger length shown with SPDT model.

FOR B6 ONLY

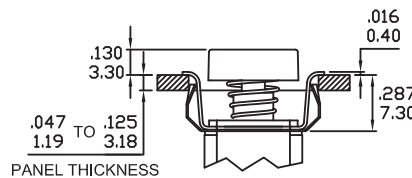
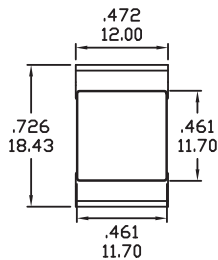


OPTION CODE	DIM. "A"
P1	.181 4.60
P2	.157 4.00

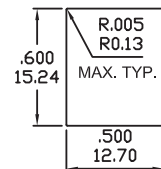
* Plunger length shown with SPDT model.

ACTUATOR OPTIONS FOR SNAP-IN FRONT MOUNT

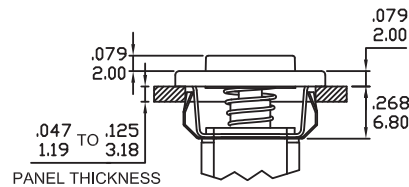
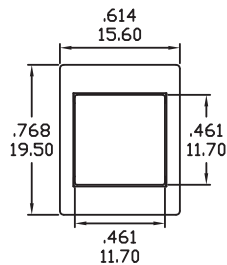
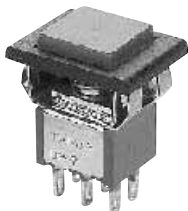
AP1



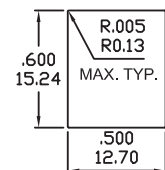
PANEL MOUNTING



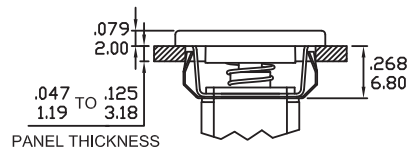
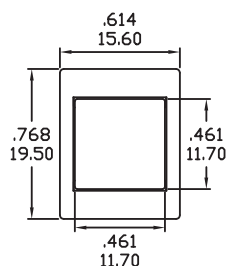
AP2 WITH FRAME



PANEL MOUNTING

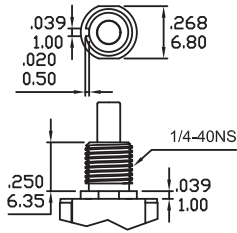


AP3 FLUSH CAP

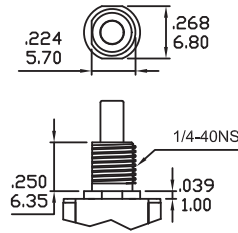


BUSHING OPTIONS

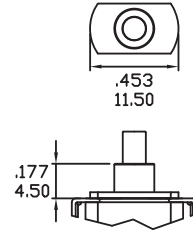
B1 THD STD
B2 NON-THD



B3 THD STD
B4 NON-THD

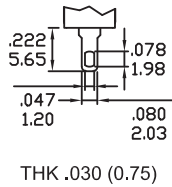


B6 NON-THD
(FOR TERMINATION OPTIONS VS6-VS9 ONLY)

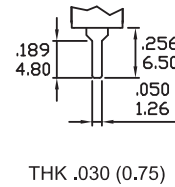


TERMINATION OPTIONS

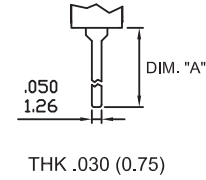
M1 STD. SOLDER LUG



M2 PC THRU-HOLE

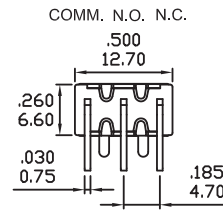
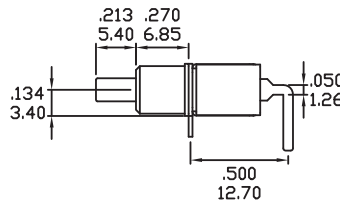
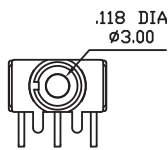


M5 WIRE WRAP

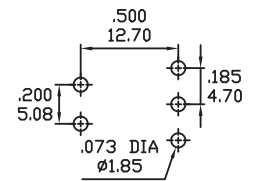


OPTION CODE	DIM. "A"
M5-1	.750 19.05
M5-2	.964 24.48
M5-3	.425 10.80

M6

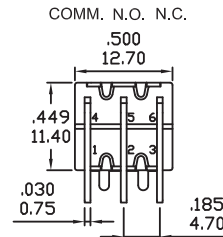
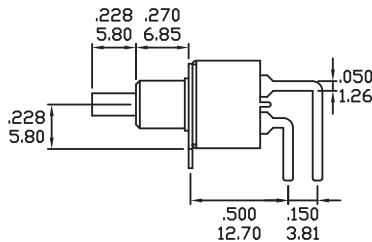
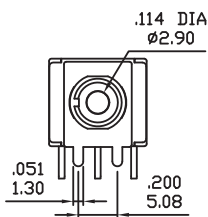
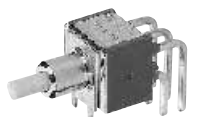


P.C.MOUNTING

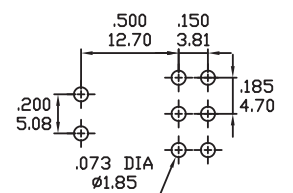


SPDT

M6

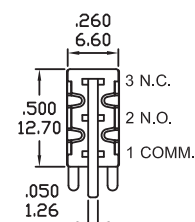
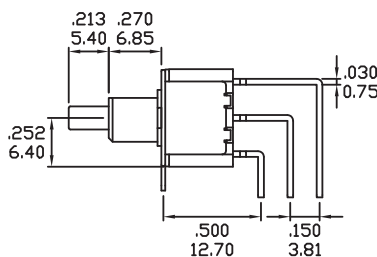
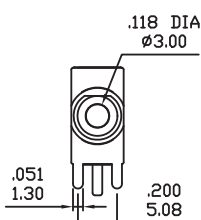
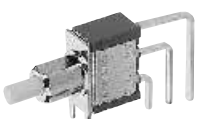


P.C.MOUNTING

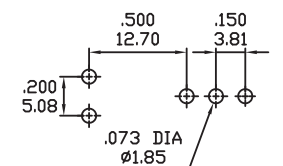


DPDT

M7



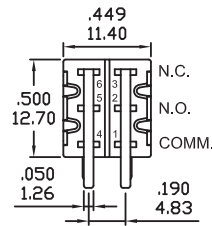
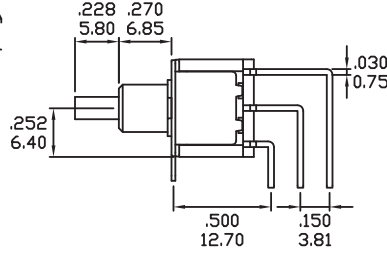
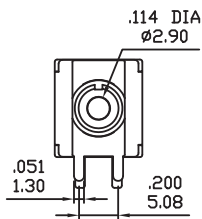
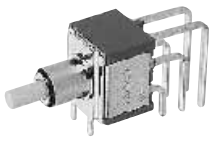
P.C.MOUNTING



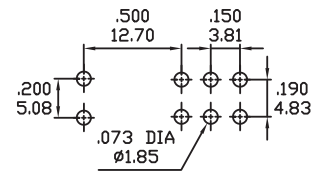
SPDT

TERMINATION OPTIONS

M7

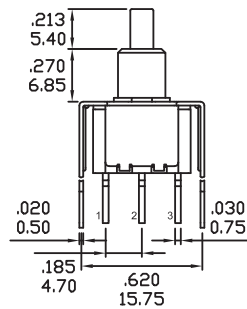
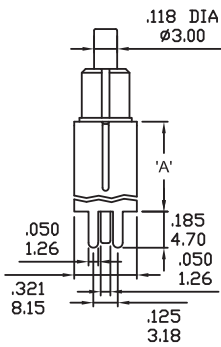


P.C.MOUNTING



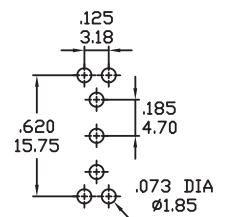
DPDT

VS2-VS3



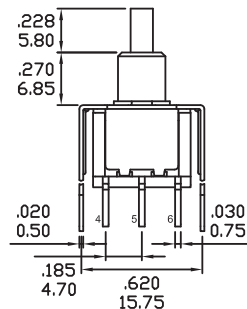
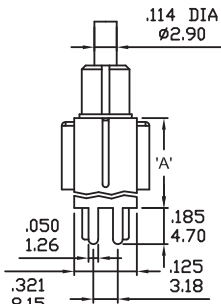
OPTION CODE	DIM.'A'
VS2	.461 11.70
VS3	.630 16.00

P.C.MOUNTING



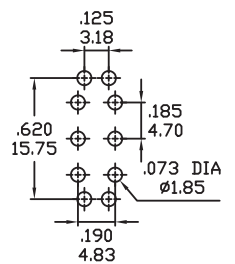
SPDT

VS2-VS3



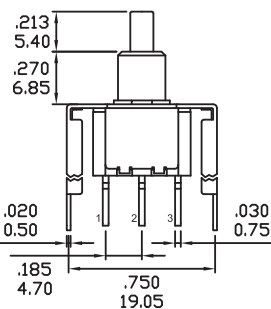
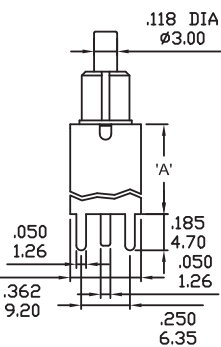
OPTION CODE	DIM.'A'
VS2	.461 11.70
VS3	.630 16.00

P.C.MOUNTING



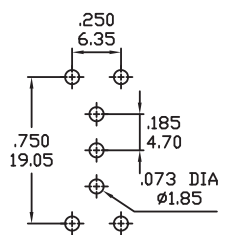
DPDT

VS4-VS5



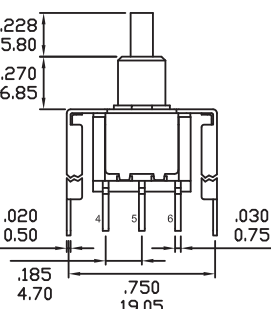
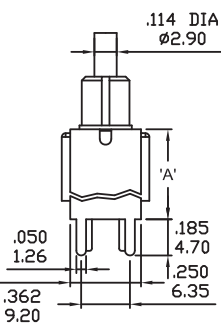
OPTION CODE	DIM.'A'
VS4	.461 11.70
VS5	.630 16.00

P.C.MOUNTING



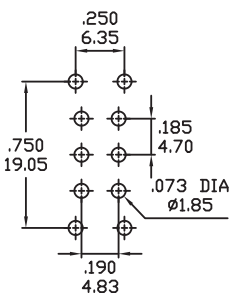
SPDT

VS4-VS5



OPTION CODE	DIM.'A'
VS4	.461 11.70
VS5	.630 16.00

P.C.MOUNTING



DPDT

Series 700

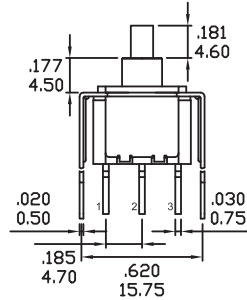
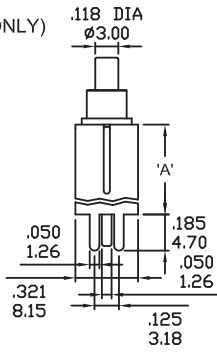
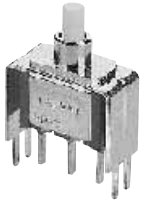
Snap-Acting Pushbutton Switches

TERMINATION OPTIONS

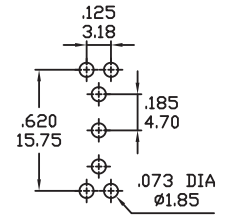
P.C.MOUNTING

VS6-VS7

(FOR B6 BUSHING ONLY)



OPTION CODE	DIM.'A'
VS6	.461 11.70
VS7	.630 16.00

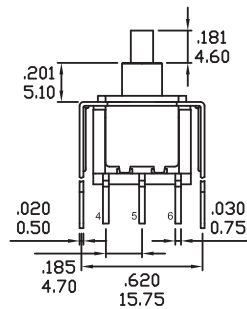
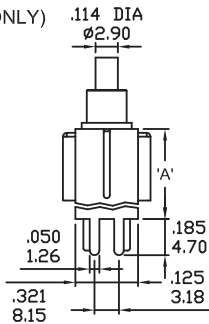
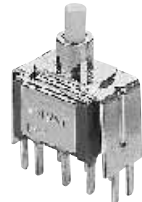


SPDT

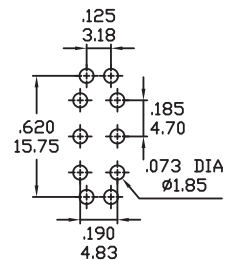
P.C.MOUNTING

VS6-VS7

(FOR B6 BUSHING ONLY)



OPTION CODE	DIM.'A'
VS6	.461 11.70
VS7	.630 16.00

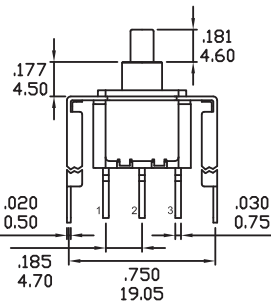
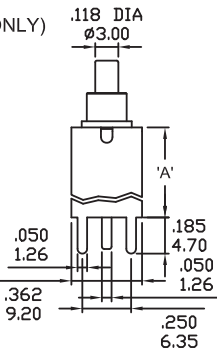


DPDT

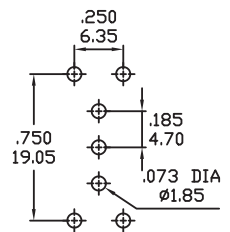
P.C.MOUNTING

VS8-VS9

(FOR B6 BUSHING ONLY)



OPTION CODE	DIM.'A'
VS8	.461 11.70
VS9	.630 16.00

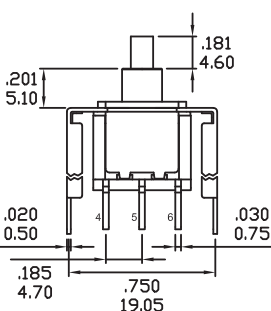
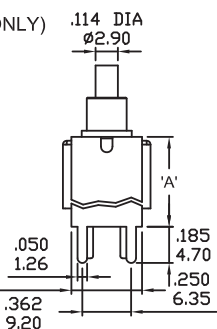


SPDT

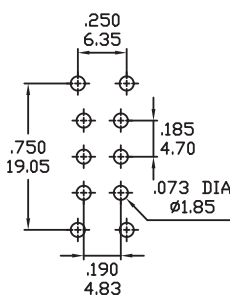
P.C.MOUNTING

VS8-VS9

(FOR B6 BUSHING ONLY)



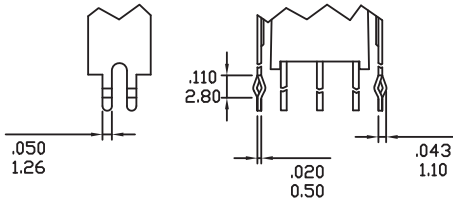
OPTION CODE	DIM.'A'
VS8	.461 11.70
VS9	.630 16.00



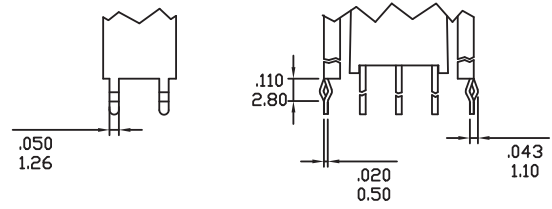
DPDT

SNAP-IN TERMINATION OPTIONS

VS21,VS31



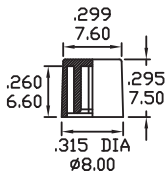
VS41,VS51



* PC Mounting for VS21,VS31,VS41,VS51 refer to VS2,VS3,VS4,VS5 respectively.

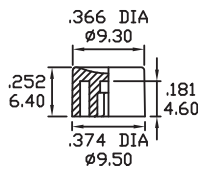
PLUNGER CAPS

C1



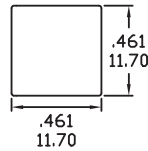
* MATERIAL: ABS.

C2



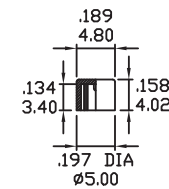
* MATERIAL: ABS.

C3



* MATERIAL: ABS.

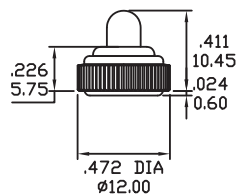
C4



* MATERIAL: ABS.

CAP AND FRAME COLORS	
1	White
2	Black
3	Red
4	Orange
5	Yellow
6	Green
7	Blue
8	Brown
9	Gray

E3 RUBBER HOOD



E3=INCH (STD.)
E3A=INCH WITH INTERNAL-ORING SEALED

* FOR P1 PLUNGER ONLY.

CONTACT MATERIAL OPTIONS

Coding	Contact Material	Terminal Plating	Rating	Agency Approvals
Q	Silver ¹	Silver plated ¹	1Amps @ 120VAC or 38VDC	
R	Gold ²	Gold plated ³	0.4VA max @ 20V max (AC or DC)	
G	Silver ¹	Gold over silver ⁴	1Amps @ 120VAC or 38VDC	

1. Movable Contact / Terminals: Copper alloy, silver plated.
2. Movable Contact: Copper alloy with gold plated over nickel plated.
3. Terminals: Copper alloy, with gold plated over nickel plated.
4. Terminals: Silver plated with outer layer in gold plating.