

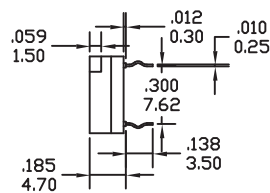
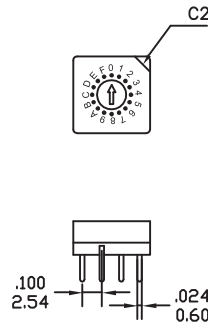
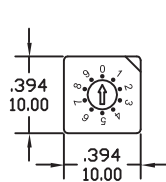
SPECIFICATIONS:

OPERATING VOLTAGE: 24V DC max.
 SWITCHING CURRENT: 100mA max. RxJ 15mA max.
 CARRYING CURRENT: 0.5A max.
 CONTACT RESISTANCE: 100mΩ max.
 INSULATION RESISTANCE: 1,000MΩ min. RxJ 100MΩ
 DIELECTRIC STRENGTH: 300VAC for 1 min.
 OPERATING TEMPERATURE: -10°C to +70°C.
 SOLDERING TEMPERATURE: 250 ± 5°C for 5 sec.
 LIFE: 10,000 step operations min.

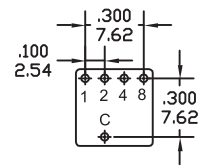
MATERIALS:

HOUSING & KNOB: Thermoplastic.
 PRINTED CIRCUIT BOARDS: Hard gold plated over nickel plated on epoxy fiberglass.
 CONTACTS & TERMINATIONS: Precious metal on phosphor bronze.

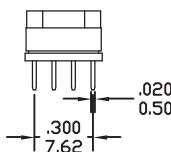
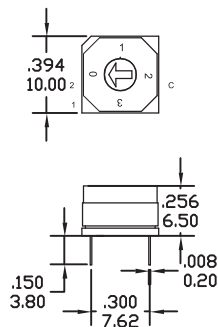
R1



P.C.MOUNTING



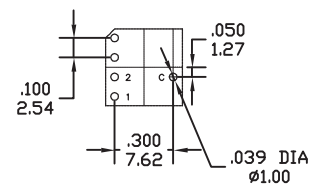
R1J



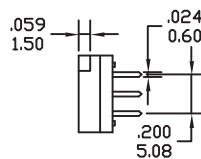
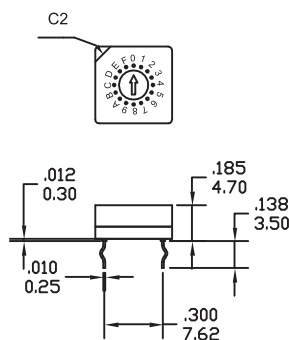
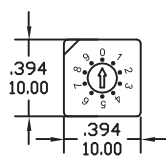
04
BCD-4 POSITION

POSITION	Common C contacted ●		
	C	1	2
0	●		
1	●	●	
2	●		●
3	●	●	●

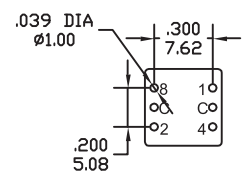
P.C.MOUNTING



R2



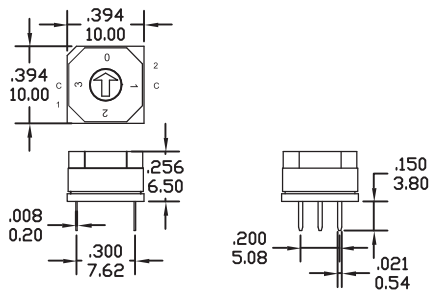
P.C.MOUNTING



Series 900A

Rotary Dip Switches

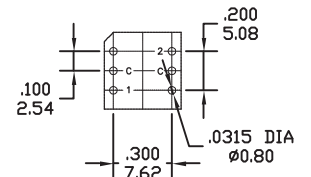
R2J



04
BCD-4 POSITION

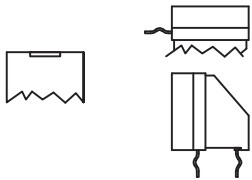
POSITION	Common C contacted ●		
	C	1	2
0	●		
1	●	●	
2	●		●
3	●	●	●

P.C.MOUNTING

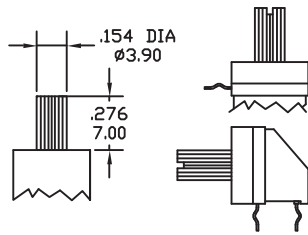


ACTUATOR OPTIONS

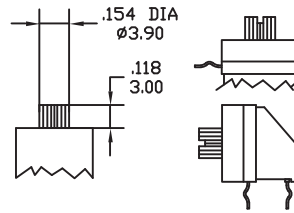
T1 FLUSH



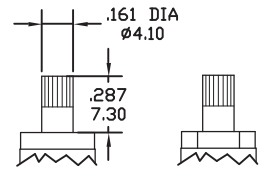
T2



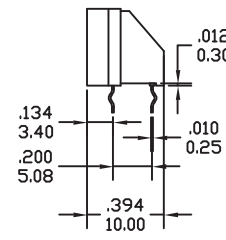
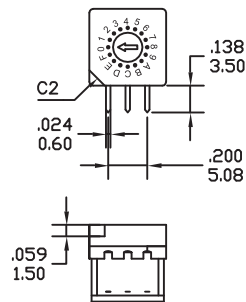
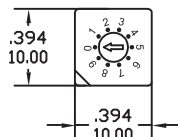
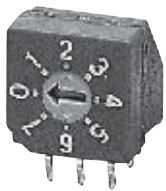
T3



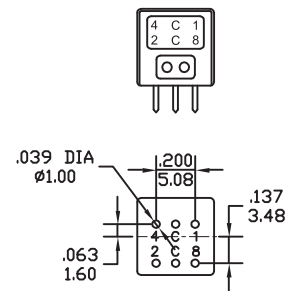
T4 (RxJ ONLY)



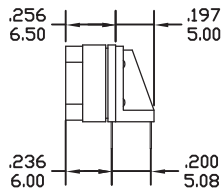
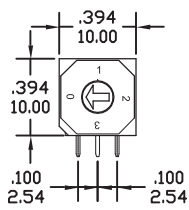
R3



P.C.MOUNTING



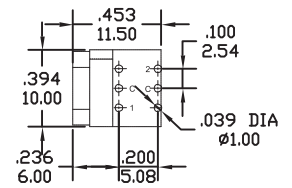
R3J



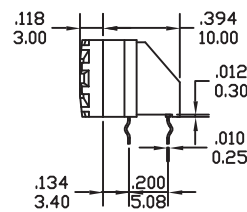
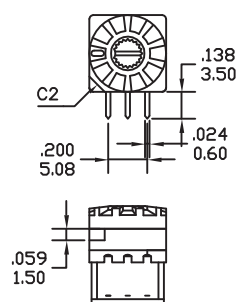
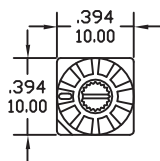
04
BCD-4 POSITION

POSITION	Common C contacted ●		
	C	1	2
0	●		
1	●	●	
2	●		●
3	●	●	●

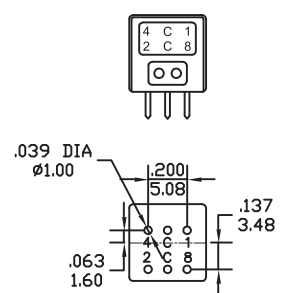
P.C.MOUNTING



R4



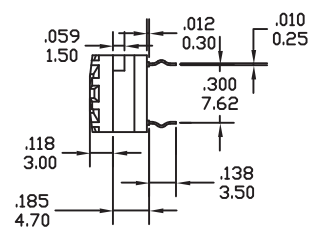
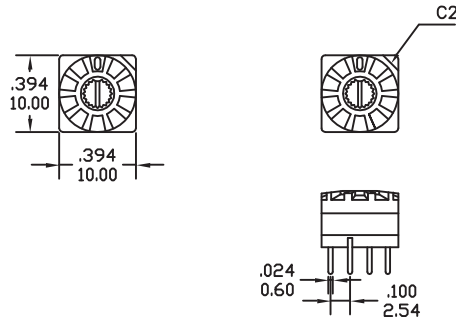
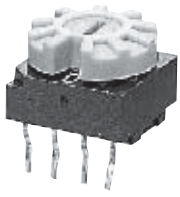
P.C.MOUNTING



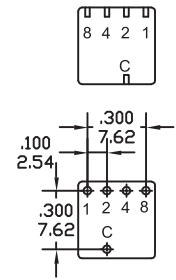
Series 900A

Rotary Dip Switches

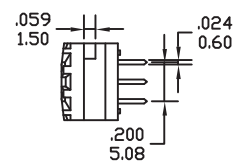
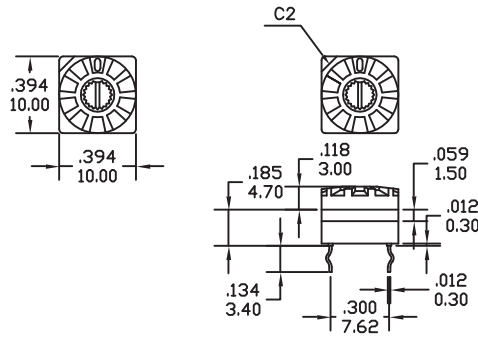
R5



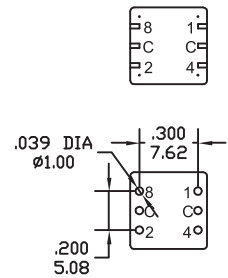
P.C.MOUNTING



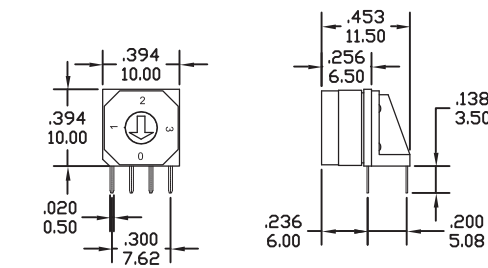
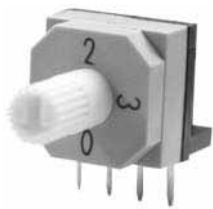
R6



P.C.MOUNTING



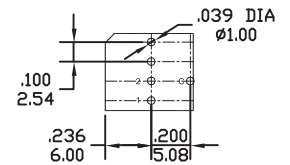
R7J



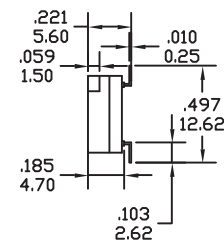
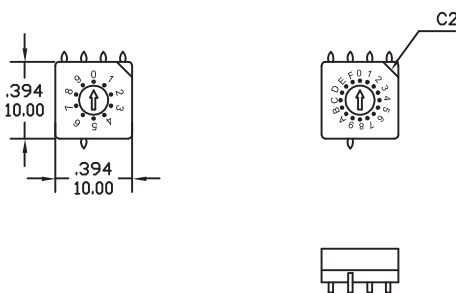
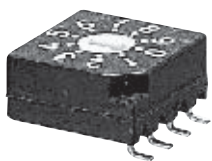
04
BCD-4 POSITION

POSITION	Common C contacted ●		
	C	1	2
0	●		
1	●	●	
2	●		●
3	●	●	●

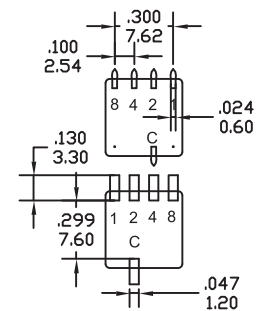
P.C.MOUNTING



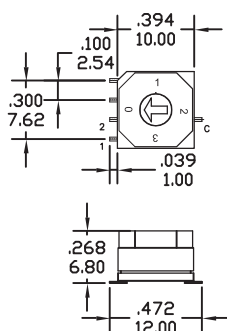
R1B



SURFACE MOUNTING



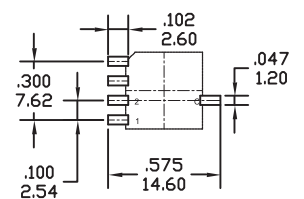
R1BJ



04
BCD-4 POSITION

POSITION	Common C contacted ●		
	C	1	2
0	●		
1	●	●	
2	●		●
3	●	●	●

SURFACE MOUNTING

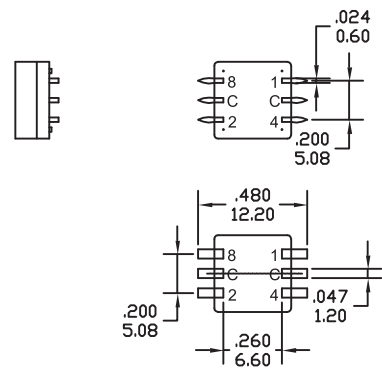
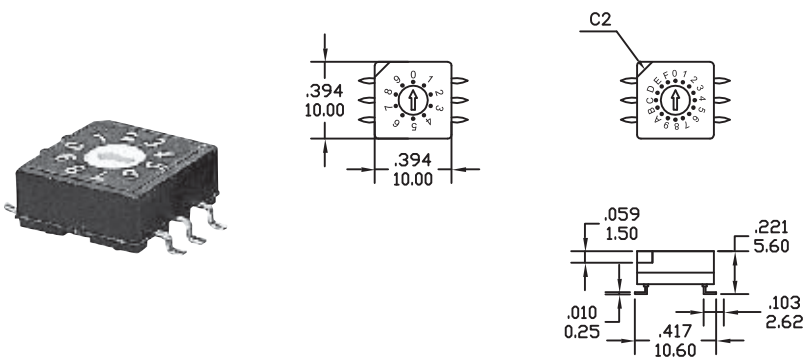


Series 900A

Rotary Dip Switches

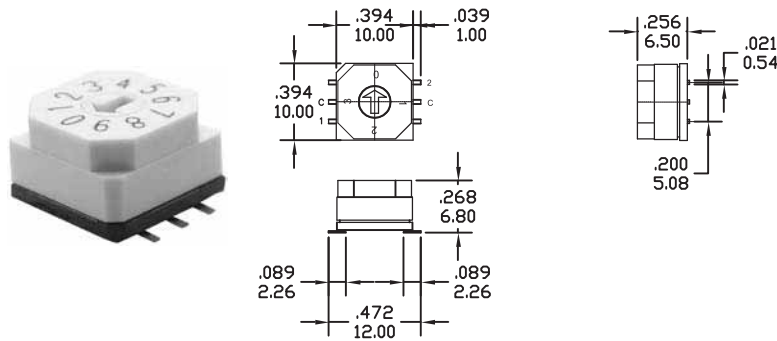
R2B

SURFACE MOUNTING



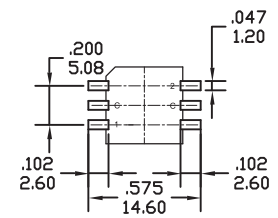
R2BJ

SURFACE MOUNTING



04
BCD-4 POSITION

POSITION	Common C contacted ●		
	C	1	2
0	●		
1	●	●	
2	●		●
3	●	●	●



CODES (NOT FOR RxJ MODEL)

CODE NO:11
BCD-8 POSITION

Position	Common C contacted ●				
	1	2	4	8	C
0					●
1	●				●
2		●			●
3	●	●			●
4			●		●
5	●		●		●
6		●	●		●
7	●	●	●		●

CODE NO:12
BCD-10 POSITION

Position	Common C contacted ●				
	1	2	4	8	C
0					●
1	●				●
2		●			●
3	●	●			●
4			●		●
5	●		●		●
6		●	●		●
7	●	●	●		●
8				●	●
9	●			●	●

CODE NO:14
BCD-16 POSITION

Position	Common C contacted ●				
	1	2	4	8	C
0					●
1	●				●
2		●			●
3	●	●			●
4			●		●
5	●		●		●
6		●	●		●
7	●	●	●		●
8				●	●
9	●			●	●
A	●	●	●	●	●
B	●	●	●	●	●
C	●	●	●	●	●
D	●	●	●	●	●
E	●	●	●	●	●
F	●	●	●	●	●

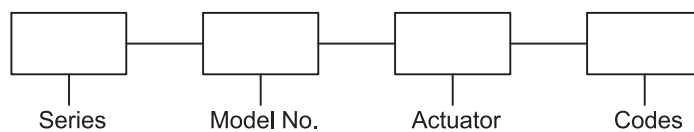
CODE NO:31
BCD COMP.-10 POS.

Position	Common C contacted ●				
	1	2	4	8	C
0	●	●	●	●	●
1		●	●	●	●
2	●		●	●	●
3			●	●	●
4	●	●		●	●
5		●		●	●
6	●			●	●
7				●	●
8	●	●	●		●
9		●	●		●

CODE NO:33
BCD COMPLEMENT-16 POS.

Position	Common C contacted ●				
	1	2	4	8	C
0	●	●	●	●	●
1	●	●	●	●	●
2	●	●	●	●	●
3	●	●	●	●	●
4	●	●	●	●	●
5	●	●	●	●	●
6	●	●	●	●	●
7	●	●	●	●	●
8	●	●	●	●	●
9	●	●	●	●	●
A	●	●	●	●	●
B	●	●	●	●	●
C	●	●	●	●	●
D	●	●	●	●	●
E	●	●	●	●	●
F	●	●	●	●	●

HOW TO ORDER



(G)Grey / (W)White Actuator = Positive Logic

(R)Red / (P)Pink Actuator = Negative Logic