

# Series KRSA

# Washable Tact Switches

## SPECIFICATIONS:

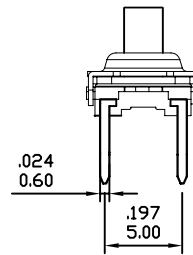
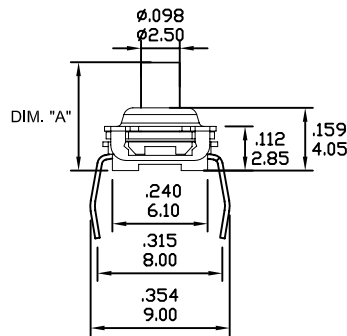
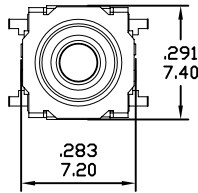
CONTACT RATING: 50mA 12V DC.  
 CONTACT RESISTANCE: 30m-ohms max.  
 TRAVEL: 0.30±0.10mm (0712), 0.35±0.10mm (0714).  
 LIFE: 80,000 cycles min.  
 OPERATING FORCE: 160±30gf (0714), 250±30gf (0712 & 0714).

## MATERIALS:

BASE & STEM: Nylon 66.  
 COVER: Steel or brass.  
 TERMINAL: Brass.  
 CONTACT: Silver copper or stainless steel.  
 O-RING: Silicon.

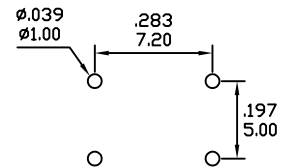
Specifications and Dimensions subject to change

### KRSA-0712

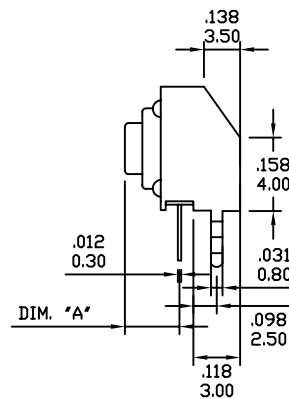
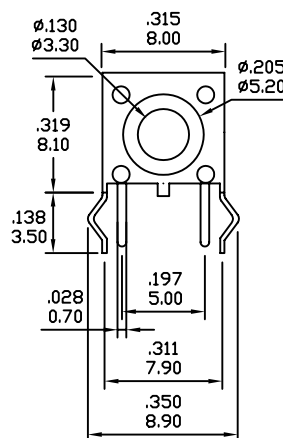


L	DIM. "A"
1	5.00(.197)
2	7.00(.276)
3	8.50(.335)

### P.C.MOUNTING

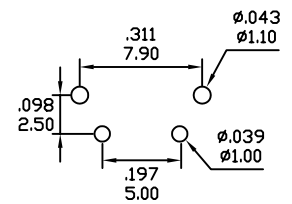


### KRSA-0714

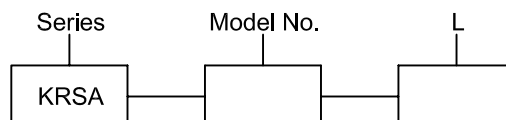


L	DIM. "A"
1	3.85(.152)
2	5.85(.230)
3	7.85(.309)

### P.C.MOUNTING



## HOW TO ORDER



# Series KRSAM

# Washable Tact Switches

## SPECIFICATIONS:

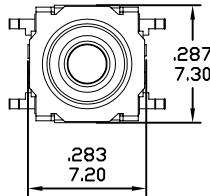
CONTACT RATING: 50mA 12V DC.  
 CONTACT RESISTANCE: 30m-ohms max.  
 TRAVEL: 0.30±0.10mm.  
 LIFE: 80,000 cycles min.  
 OPERATING FORCE: 250±30gf.

## MATERIALS:

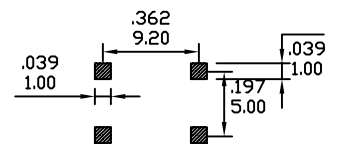
BASE & STEM: Nylon 66.  
 COVER: Brass.  
 TERMINAL: Brass.  
 CONTACT: Silver copper.  
 O-RING: Silicon.

Specifications and Dimensions subject to change

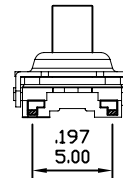
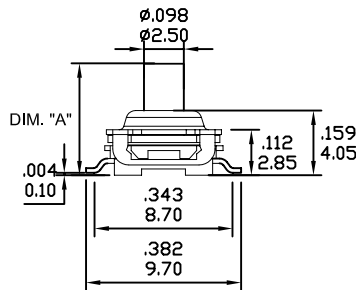
### KRSAM-0712



### P.C.MOUNTING



L	DIM. "A"
1	5.00(.197)
2	7.00(.276)
3	8.50(.335)



## HOW TO ORDER

