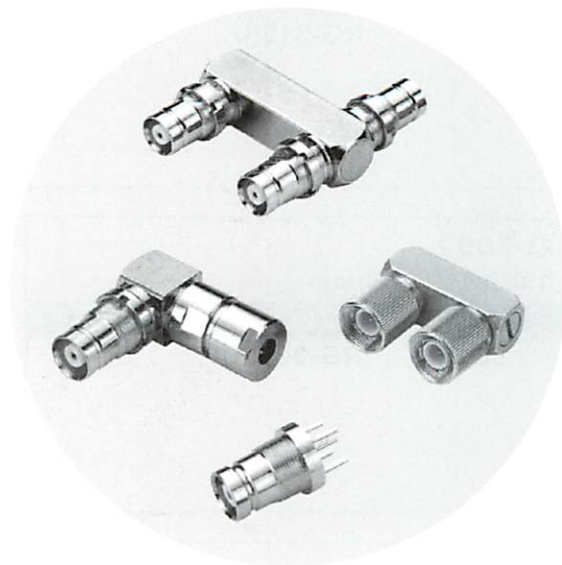
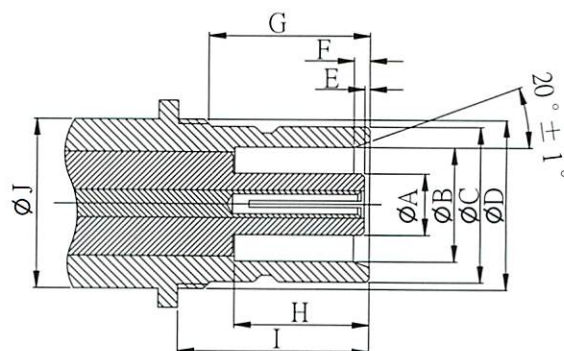
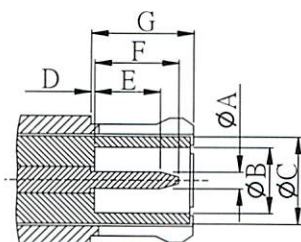


1.6/5.6 Series

1.6/5.6 connectors are miniature 75 ohm with threaded coupling / snap-on mechanisms which allows easy connection and disconnection. It provides continual electrical performance from DC to 1GHz in the applications of switching equipment, telecommunication and routers.



Interface dimensions:



MALE(PLUG) mm		
	Min.	Max.
A	0.97	1.03
B	4.00	-
C	5.60 nom.	
D	-	0.15
E	3.90	4.30
F	-	5.50
G	6.40	6.60

FEMALE(JACK) mm		
	Min.	Max.
A	-	3.80
B	6.60	6.69
C	8.10	8.25
D	M9*P0.5	
E	0.25	0.75
F	0.90	1.10
G	7.00	7.50
H	6.70	-
I	9.70	-
J	5.60 nom.	

Electrical:

Impedance		75 ohm
Frequency Range		0~1 GHz
Working Voltage		300 VRMS max
Dielectric Wuthstanding Voltage		1000 VRMS max
VAWR	Straight	1.3 max
	Right Angle	1.5 max
Contact Resistance	Center Contact	4 Milliohms Max.
	Outer Contact	2 Milliohms Max.
Insulator Resistance		1000 Megohms min.

Meaterial:

Parts name	Material	Finish
Body/Metal Parts	Brass per QQ-B-626	Nickel or Gold per requirement
Center Contacts	Male: Brass per QQ-B-626 Phosphor Bronze per QQ-B-750	Gold
	Female: Brass per QQ-B-626 Beryllium copper per QQ-B-750	
Insulators	PTFE	None
Crimp Ferrule	Annealed copper	Nickel or Gold per requirement

1.6/5.6

NOTE:Other Material/Finish is Available on Request.

Mechanical & Environmental:

Mating	M9*0.5 theraded coupling
Contact Retention	26lbs. min.
Durability(Mating)	500 cycles min.(for Beryllium copper female contact only)

1.6/5.6 Series

G-5501
1.6/5.6 Male Crimp

P/N	CABLE GROUP	IMPEDANCE
5501	ST-212 RG-179/U 2.5C-2V 3C-2V	75 75 75 75

G-5502
1.6/5.6 Male Right Angle Crimp

P/N	CABLE GROUP	IMPEDANCE
5502	ST-212 RG-179/U 2.5C-2V 3C-2V	75 75 75 75

G-5503
1.6/5.6 Male Connector

P/N	CABLE GROUP	IMPEDANCE
5503	N/A	75

G-5504
1.6/5.6 Male Clamp

P/N	CABLE GROUP	IMPEDANCE
5504	N/A	75

G-5505
1.6/5.6 Male Right Angle Clamp

P/N	CABLE GROUP	IMPEDANCE
5505	ST-212 RG-179/U 2.5C-2V 3C-2V	75 75 75 75

G-5506
1.6/5.6 Male PCB Mount

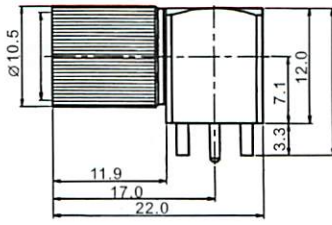

P/N	CABLE GROUP	IMPEDANCE
5506	N/A	75

1.6/5.6

1.6/5.6 Series



G-5507
1.6/5.6 Male Right Angle PCB Mount

P/N	CABLE GROUP	IMPEDANCE
5507	N/A	75

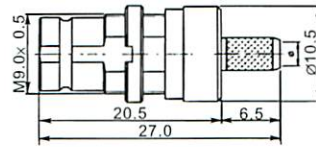

G-5508
1.6/5.6 Male U Link Connector

P/N	CABLE GROUP	IMPEDANCE
5508	N/A	75

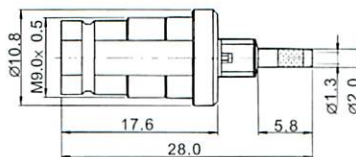

G-5509
1.6/5.6 Female Crimp

P/N	CABLE GROUP	IMPEDANCE
5509	ST-212 RG-179/U 2.5C-2V 3C-2V	75 75 75 75

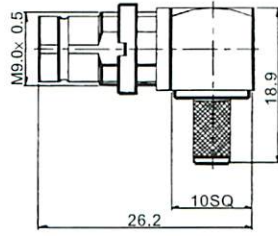

G-5510
1.6/5.6 Female Crimp Insulator

P/N	CABLE GROUP	IMPEDANCE
5510	N/A	75

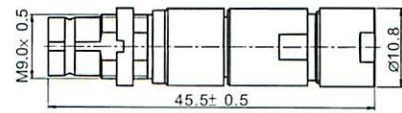

G-5511
1.6/5.6 Female Right Angle Crimp

P/N	CABLE GROUP	IMPEDANCE
5511	ST-212 RG-179/U 2.5C-2V 3C-2V	75 75 75 75

G-5512
1.6/5.6 Female Clamp

P/N	CABLE GROUP	IMPEDANCE
5512	ST-212 RG-179/U 2.5C-2V 3C-2V	75 75 75 75

1.6/5.6

1.6/5.6 Series

G-5513
1.6/5.6 Female Right Angle Clamp

P/N	CABLE GROUP	IMPEDANCE
5513	ST-212 RG-179/U 2.5C-2V 3C-2V	75

G-5514
1.6/5.6 Female PCB Mount

P/N	CABLE GROUP	IMPEDANCE
5514	N/A	75

G-5515
1.6/5.6 Female Right Angle PCB Mount

P/N	CABLE GROUP	IMPEDANCE
5515	N/A	75

G-5516
1.6/5.6 Female Bulkhead Solder

P/N	CABLE GROUP	IMPEDANCE
5516	N/A	75

G-5517
1.6/5.6 H Triple Female Adapter H Type Adaptor

P/N	CABLE GROUP	IMPEDANCE
5517	N/A	75

P/N	CABLE GROUP	IMPEDANCE

1.6/5.6